

Infiniium 80000 Series Oscilloscopes InfiniiMax II Series Probes

13, 12, 10, and 8 GHz Oscilloscope Measurement Systems

Data Sheet

- 13, 12, 10, and 8 GHz bandwidth real-time oscilloscopes with up to 40 GSa/s sample rate
- Up to 2 Mpts MegaZoom deep memory at 40 GSa/s sample rates and 64 Mpts MegaZoom deep memory at 4 GSa/s
- InfiniiMax II probing system with up to 13 GHz bandwidth
- Trigger jitter less than 500 fs rms
- Lowest vertical noise floor and lowest jitter measurement floor in the industry
- Easy-to-use, easy-to-understand jitter analysis option
- Electronic attenuators eliminate the reliability and ESD discharge concerns associated with mechanical attenuator relays
- Unrivaled InfiniiMax probing accessories support browsing, solder-in, socket use, and SMA use models all at 12 GHz or greater bandwidth
- Award-winning user interface based on Microsoft Windows® XP Pro supports CD-RW, dual-monitor, and third-party software packages

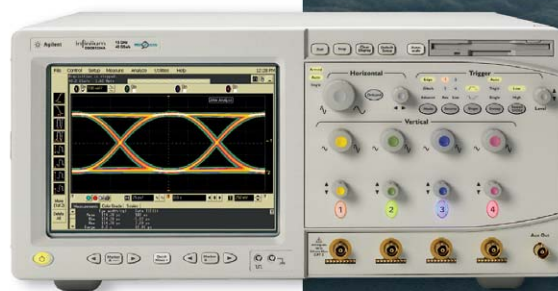
The highest signal integrity measurement system available

An oscilloscope and probing system with bandwidths up to 13 GHz and a maximum sample rate of 40 GSa/s is required to meet the performance needs of engineers designing state of the art high-speed serial communication links and other ultra-high-speed electronic systems. Modern industry bus standards such as Fibre Channel, Fully Buffered DIMM, Serial ATA, Serial Attached SCSI, and PCI-Express have performance points in the 4 to 8.5 Gb/s range. Proprietary high-speed serial buses can also have clock rates in the 4 to 8.5 Gb/s range as well as rise times faster than 50 ps. Scopes with bandwidths of 8, 10, 12, or 13 GHz are required to capture



Agilent DSOs

**Breaking the 10 GHz
Performance Barrier**



Agilent Technologies

Benefits

the frequency harmonics of such high-speed signals and make accurate and repeatable measurements on them.

Agilent's award-winning InfiniiMax probing system set the standard

for probing systems and the rest of the oscilloscope industry is now following this trend-setting architecture. Agilent's InfiniiMax II probing system takes this innovation to an unmatched level of performance and usability.

InfiniiMax: The World's Best High-Speed Probing System

EDN Magazine has awarded Agilent's InfiniiMax active probe system the 2002 Innovation of the Year Award.



80000 Series Infiniium oscilloscopes

Model	Bandwidth	Channels	Maximum sample rate
DSO81304A	13 GHz real-time DSP enhanced	on 2 channels	40 GSa/s
	12 GHz real-time	on 2 channels	40 GSa/s
	13 GHz equivalent-time	on 4 channels	500 fs point spacing
	8 GHz real-time	on 4 channels	20 GSa/s
DSO81204A	12 GHz real-time	on 2 channels	40 GSa/s
	12 GHz equivalent-time	on 4 channels	500 fs point spacing
	8 GHz real-time	on 4 channels	20 GSa/s
DSO81004A	10 GHz real-time	on 2 channels	40 GSa/s
	10 GHz equivalent-time	on 4 channels	500 fs point spacing
	8 GHz real-time	on 4 channels	20 GSa/s
DSO80804A	8 GHz real-time	on 2 channels	40 GSa/s
	8 GHz equivalent-time	on 4 channels	500 fs point spacing
	8 GHz real-time	on 4 channels	20 GSa/s

Maximum memory depth for all DSO 80000 Series

Standard acquisition memory	0.5 Mpts on 2 channels, 0.25 Mpts on 4 channels
Optional acquisition memory this option also enables	2 Mpts on 2 channels, 1 Mpts on 4 channels 64 Mpts on 2 channels at 4 GSa/s, 32 Mpts on 4 channels ≤ 2 GSa/s
Maximum memory in equivalent-time modes	always 0.25 Mpts per channel



U.S. Navy imagery used in illustration without endorsement expressed or implied.

Benefits (continued)

InfiniiMax II Series probe amplifiers

Model	Bandwidth	Description
1169A	12 GHz (spec) 13 GHz (typical)	InfiniiMax II probe amplifier – order one or more probe heads
1168A	10 GHz	InfiniiMax II probe amplifier – order one or more probe heads

InfiniiMax probe amplifier specifications: Dynamic range = 3.3 V, DC offset range = ± 16 V, maximum voltage = ± 30 V

InfiniiMax II Series probe heads

InfiniiMax II Series probe heads are recommended for 1169A/68A probe amplifiers. When used with a DS081304A, the N5380A, N5381A, and N5382A will typically achieve 13 GHz bandwidth.

Probe head	Model number	Differential measurement (BW, input C, input R)	Single-ended measurement (BW, input C, input R)
Hi-BW differential SMA	N5380A	12 GHz	12 GHz
Hi-BW differential solder-in	N5381A	12 GHz, 0.21 pF, 50 k Ω	12 GHz, 0.35 pF, 25 k Ω
Hi-BW differential browser	N5382A	12 GHz, 0.21 pF, 50 k Ω	12 GHz, 0.35 pF, 25 k Ω

InfiniiMax I Series probe heads can be used with 1169A/68A probe amplifiers with limitations.

Probe head	Model number	Differential measurement (BW, input C, input R)	Single-ended measurement (BW, input C, input R)
Differential solder-in (Higher loading, high frequency response variation)	E2677A	12 GHz, 0.27 pF, 50 k Ω	12 GHz, 0.44 pF, 25 k Ω
Differential socket (Higher loading)	E2678A	12 GHz, 0.34 pF, 50 k Ω	12 GHz, 0.56 pF, 25 k Ω
Differential browser – wide span	E2675A	6 GHz, 0.32 pF, 50 k Ω	6 GHz, 0.57 pF, 25 k Ω
Differential SMA	E2695A	8 GHz	8 GHz
Single-ended solder-in (must bandlimit input to ≤ 5.2 GHz)	E2679A	N/A	6 GHz, 0.50 pF, 25 k Ω
Single-ended browser	E2676A	N/A	6 GHz, 0.67 pF, 25 k Ω

Benefits (continued)

Example 1: How much bandwidth do I need to measure a given rise/fall time accurately?

Rise/fall time (20 - 80%)	3% accuracy	5% accuracy	10% accuracy
100 ps	5.6 GHz	4.8 GHz	4.0 GHz
75 ps	7.5 GHz	6.4 GHz	5.3 GHz
60 ps	9.3 GHz	8.0 GHz	6.7 GHz
50 ps	11.2 GHz	9.6 GHz	8.0 GHz
40 ps	14.0 GHz	12.0 GHz	10.0 GHz
30 ps	18.7 GHz	16.0 GHz	13.3 GHz

Notes:

Maximum signal frequency content = $0.4 / \text{rise time (20 - 80\%)}$

Scope bandwidth required = $1.4 \times$ maximum signal frequency for 3% accuracy measurements

Scope bandwidth required = $1.2 \times$ maximum signal frequency for 5% accuracy measurements

Scope bandwidth required = $1.0 \times$ maximum signal frequency for 10% accuracy measurements

Example 2: How much bandwidth do I need for a given high-speed serial bus clock rate?

Serial bus clock rate	Fundamental frequency of data signal	3rd harmonic frequency of data signal	5th harmonic frequency of data signal
2.5 Gb/s	1.25 GHz	3.75 GHz	6.25 GHz
4.25 Gb/s	2.125 GHz	6.375 GHz	10.625 GHz
5.0 Gb/s	2.5 GHz	7.5 GHz	12.5 GHz
6.0 Gb/s	3.0 GHz	9.0 GHz	15.0 GHz
7.0 Gb/s	3.5 GHz	10.5 GHz	17.5 GHz
8.5 Gb/s	4.25 GHz	12.75 GHz	21.25 GHz

Benefits (continued)

Key trends in the electronics market

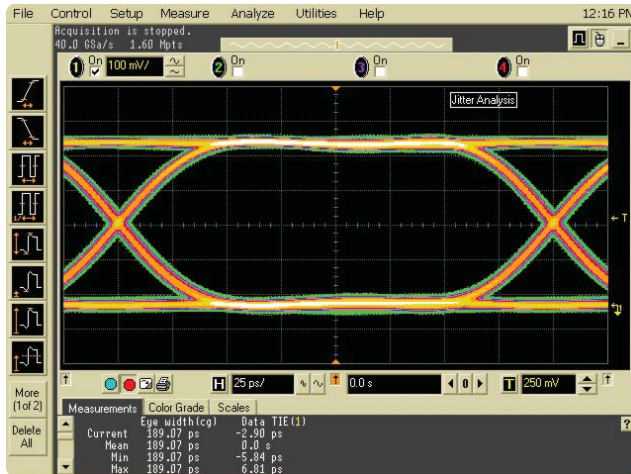
- Technologies with dramatically increased clock speeds and edge rates have emerged.
- Very fast serial differential buses are being used to save board space, reduce power and provide better noise immunity.
- Densely packed circuit boards, often with stacked daughter boards, increase the need to probe in very hard-to-reach places.

Key benefits of the 80000 and InfiniiMax II Series

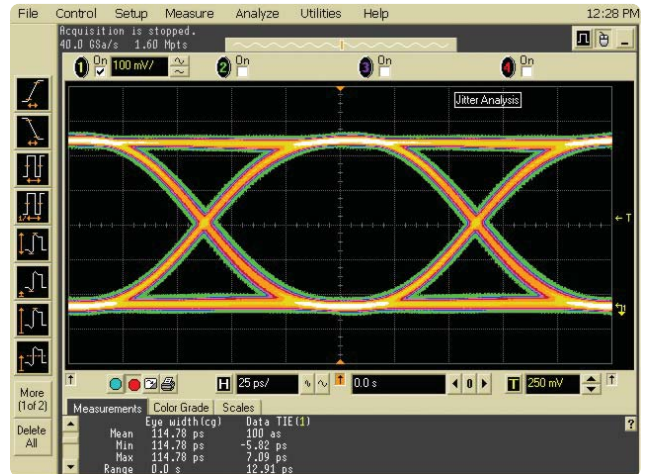
- Up to 13 GHz bandwidth can track even the fastest signal speeds.
- A sample rate of up to 40 GSa/s can measure high-speed differential buses reliably and repeatedly.
- The innovative InfiniiMax II probing system supports even the most demanding mechanical access requirements without sacrificing performance.



The DSO 80000 Series Produces Accurate and Repeatable Measurements



5 Gb/s real-time eye diagram with DS081004A



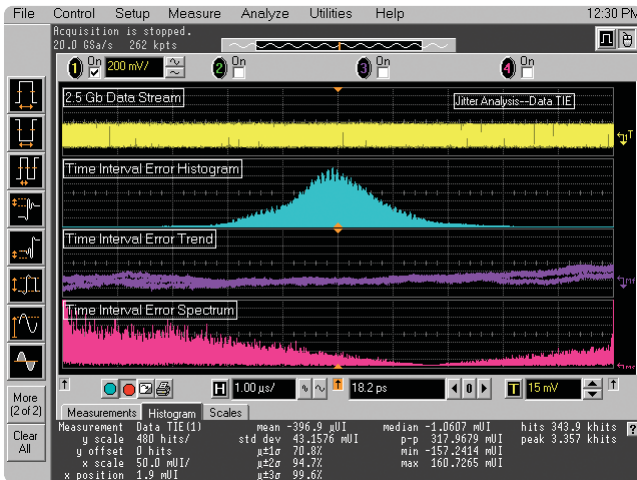
8 Gb/s real-time eye diagram with DS081204A

- The full real-time bandwidth of the oscilloscope is supported by up to a 40 GSa/s sample rate.
- This industry-leading sample rate produces more accurate and repeatable measurements, avoiding measurement error and signal aliasing due to under sampling, as shown above. This is especially important for high-quality jitter measurements.
- The combination of up to 13 GHz bandwidth and 40 GSa/s sample rate makes the 80000 Series ideal for designs that include: PCI-Express II, Serial ATA II/III, 6 Gbs SAS, 4.25 and 8.5 Gbs Fibre Channel, 4.8 Gbs Fully Buffered DIMM, or other high-speed electronic signals.

DSO 80000 Series measurements

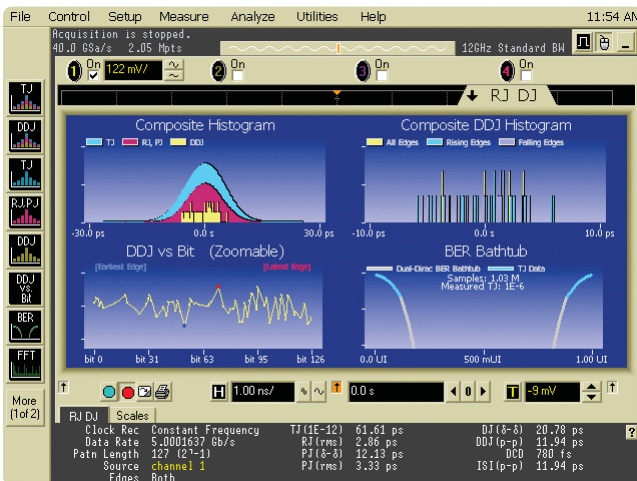
Serial clock rate	Eye width	Data TIE pk-pk	Data TIE rms
5 Gb/s (DS081004A)	189 ps	12.6 ps	1.3 ps
8 Gb/s (DS081204A)	115 ps	12.9 ps	1.3 ps

Jitter Application Software Packages



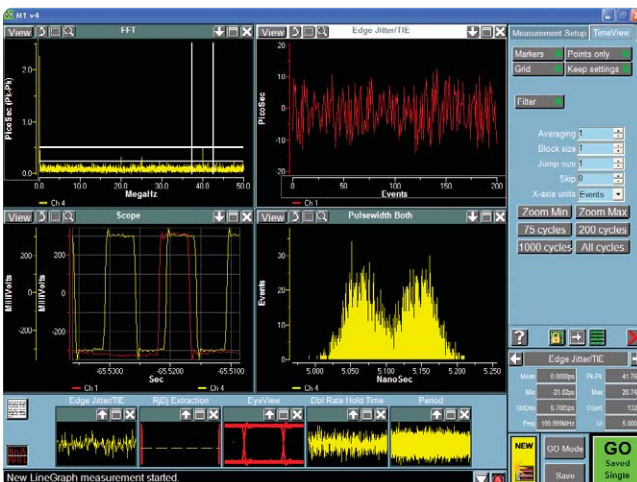
E2681A EZJIT Jitter analysis software

Includes the following key measurements: cycle-to-cycle jitter, n-cycle jitter, period jitter, time interval error, setup and hold time, measurement histograms, measurement trending, and jitter frequency spectrum.



N5400A EZJIT Plus Jitter analysis software

Quickly separate random and deterministic jitter components and estimate total jitter at low BER for standards compliance. Automatic clock recovery and pattern detection, an easy-to-use setup wizard and graphical display views integrated into the Infiniium oscilloscope software further simplify navigation and RJ/DJ analysis.



E2690A Timing Interval and Jitter Analysis software

Measure the worst-case jitter in serial data streams, PLLs, and high-speed clock designs. Measurements include line graph, histogram, jitter spectrum, RJ/DJ separation, and bathtub curve. Provides the most comprehensive set of jitter analysis measurements and views.

Infiniium: “It’s like someone who sits down and actually uses a scope designed this one.”

Steve Montgomery, Director of Engineering, Linx Technologies

Up to 40 GSa/s sample rate on two channels

significantly reduces the chances of aliasing, increases measurement accuracy, and delivers the full real-time bandwidth of the oscilloscope on two channels simultaneously.

Four channels at 20 GSa/s with 8 GHz real-time bandwidth or full bandwidth equivalent time modes are also available.

Get fast answers to your questions with the built-in information system. Infiniium’s task-oriented Setup Guide provides step-by-step instructions for several advanced measurements and procedures.

See your signal more clearly with a large (8.4-inch) high-resolution color display. Infiniium’s bright TFT display with anti-glare coating lets you see the details of your signal from all angles.

20 Gb hard drive, 3.5” 1.44 MB floppy drive and rear USB port make it easy to save setup files, data files, screen shots, etc.

Identify anomalies easily with color-graded persistence, a colorful visual representation of waveform distribution.

Label waveforms and add notes to your screen captures — Infiniium’s keyboard makes it easy.

Drag and drop markers with your mouse or use the arrow keys.

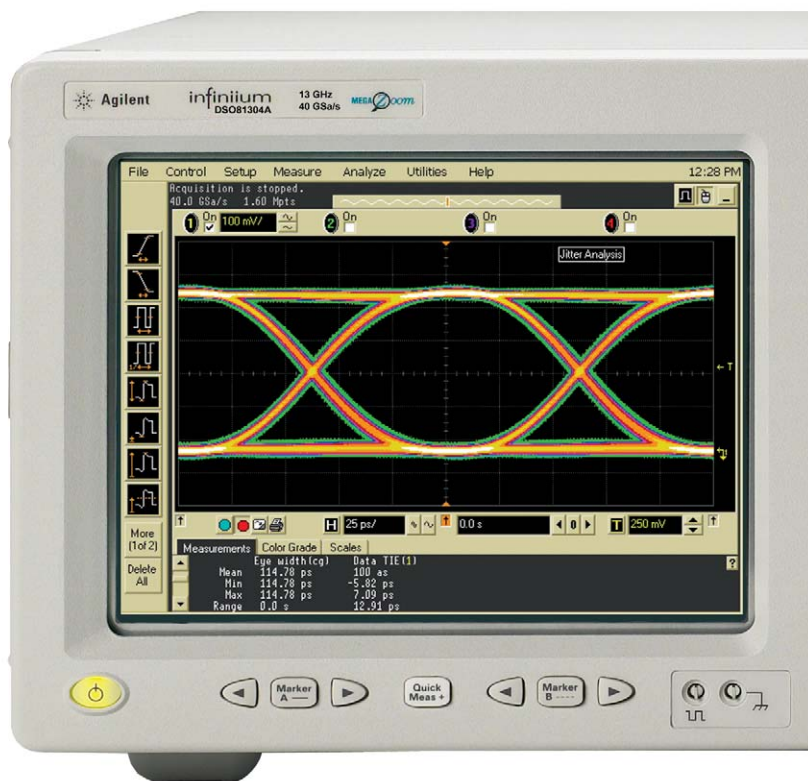
Easy access to advanced features like math functions and FFTs, is provided by the Windows-based graphical user interface. This GUI also gives you unique capabilities like drag-and-drop measurements and zooming, and offers a graphical equivalent to all front panel controls.

Remote access with Web-enabled connectivity, e-mail on trigger, and GPIB over LAN allows you to access your scope from remote locations.

Infiniium: Award-winning scopes

Infiniium has received ten industry awards to date, including EDN’s “Innovation of the Year” award (twice) and T&M World’s “Best in Test.” Agilent is committed to breaking new ground and providing tools that bring unique value to our customers.

64 Mpts acquisition memory at 4 GSa/s sample rate on two channels allows you to capture long time windows at high resolution — such as identifying glitches due to a power supply start-up from reset.



QuickMeas+ key gives you any five automated measurements with a push of a button. You can also configure this key to print/save screen shots, save waveforms, or load a favorite setup.

Zoom and search with instant response. Zoom into your signal using the horizontal scale knob and search through your waveform with the position knob. MegaZoom technology allows you to find your area of interest quickly and easily – even with 64 Mpts waveforms.

Built-in CD-R drive on rear panel allows you to update the system software conveniently and can be used to install third-party application packages.



Hands-free operation with the Infiniium VoiceControl option. Just speak into the microphone to operate front-panel controls.

Segmented memory acquisition mode captures bursting signals at maximum sample rate without consuming memory during periods of inactivity.

Removable hard disk drive option is available for added data security.

Install third-party software packages such as Excel, LabView, Agilent Vee, MATLAB®, anti-virus software, and more to perform customized processing and automation of your oscilloscope or to make the scope compliant to the network environment of your company.

An external monitor allows you to run third-party applications on a large, high-resolution display while using the scope's built-in monitor for high-speed waveform display.

Windows® XP Pro operating system.

A familiar interface makes simple tasks simple. Infiniium's analog-like front panel has a full set of controls color coded to the waveforms and measurements, making simple tasks simple.

One-year standard warranty and a variety of Agilent support options protect your investment for the long term.

10 MHz reference clock can be input (optional) to or output (standard) from the scope to allow precise timebase synchronization with RF instruments or logic analyzers.

A new 18 GHz, BNC-compatible connector provides a high signal fidelity connection to Agilent active probes, SMA adapters, and standard BNCs.

AutoProbe interface completely configures your scope for use with the InfiniMax probing system and previous generation Agilent active probes.

10/100 Mbps LAN interface lets you easily print waveforms on networked printers, save your results on your office PC, share information with others, and control the scope over the Web.

InfiniiMax II: The World's Best High-Speed Probing System Just Got Better

InfiniiMax offers you the highest performance available for measuring differential and single-ended signals, with flexible connectivity solutions for today's high-density ICs and circuit boards.

InfiniiMax probes have fully characterized performance for all of their various probe heads. This includes:

- Swept frequency response plot
- Common mode rejection vs. frequency plot
- Impedance vs. frequency plot
- Time-domain probe loading plot
- Time-domain probe tracking plot

One-year standard warranty on active probes and a variety of Agilent support options to choose from.

Controlled impedance transmission lines in every probe head deliver full performance versus the performance limitations produced by traditional wire accessories.

Probe interface software allows you to save the calibration information for up to 10 different probe heads per channel and will automatically retrieve calibration data for a probe amplifier as it is attached to the scope.

High-input impedance active probes minimize loading, support differential measurements and DC offset, and can compensate for cable loss.

Probe calibration software delivers the most accurate probe measurements, linear phase response and allows various probe combinations to be deskewed to the same reference time.

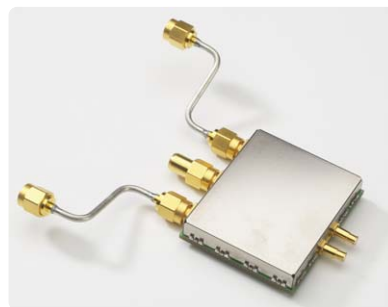
InfiniiMax II probe heads



12 GHz Hi-BW solder-in differential probe head provides maximum bandwidth and minimizes capacitive loading to ≤ 210 fF. Variable spacing from 0.2 to 3.3 mm (8 to 130 mills).



12 GHz Hi-BW differential browser provides maximum bandwidth for hand-held or probe holder use. Variable spacing from 0.2 to 3.3 mm (8 to 130 mills).



12 GHz Hi-BW differential SMA probe head provides maximum bandwidth for SMA fixtured differential pairs.



Two new high-bandwidth InfiniiMax II Series probe amplifiers have been added to the InfiniiMax product line. InfiniiMax I probe amplifiers and probe heads can also be used with DSO 80000 Series scopes for lower performance applications.

InfiniMax I probe heads

6 GHz differential browser is the best choice for general-purpose trouble-shooting of differential or single-ended signals with z-axis compliance and variable spacing from 0.25 - 5.80 mm (10 - 230 mills).



12 GHz solder-in differential probe head can be attached to very small geometry circuits for measuring both single-ended and differential signals.



12 GHz differential socket probe head can be used to measure either differential or single-ended signals.



Extremely small single-ended, solder-in probe heads support 6 GHz measurements of even the hardest-to-reach single-ended signals.



Single-ended browser is the best choice for general purpose probing of single-ended signals when small size of the probe head is the primary consideration. Bandwidths up to 6 GHz can be obtained in this configuration.



8 GHz differential SMA probe head allows you to connect two SMA cables to make a differential measurement on a single scope channel.



The 54006A 7.5 GHz resistive divider probe is available as a low-cost probing alternative for casual inspection of signals.

A flat frequency response over the entire probe bandwidth eliminates the distortion and frequency-dependent loading effects that are present in probes that have an in-band resonance.

Infiniium 80000 Series Performance Characteristics

Vertical

Input channels	4				
Analog bandwidth (–3 dB)*	81304A: 12 GHz	81204A: 12 GHz	81004A: 10 GHz	80804A: 8 GHz	
DSP enhanced bandwidth ⁹	81304A: 13 GHz using DSP enhanced bandwidth mode				
Rise time/fall time	(20 - 80%)	81304A: 23 ps	81204A: 25 ps	81004A: 30 ps	80804A: 38 ps
	(10 - 90%)	81304A: 33 ps	81204A: 36 ps	81004A: 42 ps	80804A: 54 ps
Input impedance	50 Ω ± 3%				
Sensitivity ¹	1 mV/div to 1 V/div				
Input coupling	DC				
Vertical resolution ²	8 bits, ≥ 12 bits with averaging				
Channel to channel isolation (any two channels with equal V/div settings)	DC to 3 GHz: 60 dB 3 GHz to 8 GHz: 40 dB 8 GHz to BW: 35 dB				
DC gain accuracy* ¹	± 2% of full scale at full resolution channel scale				
Maximum input voltage*	± 5 V				
Offset range	Vertical sensitivity:	Available offset:			
	0 mV/div to ≤ 40 mV/div	± 0.4 V			
	> 40 mV/div to ≤ 75 mV/div	± 0.9 V			
	> 75 mV/div to ≤ 130 mV/div	± 1.6 V			
	> 130 mV/div to ≤ 240 mV/div	± 3.0 V			
	> 240 mV/div	± 4.0 V			
Offset accuracy* ¹	≤ 3.5 V: ± (2% of channel offset + 1% of full scale) +1 mV > 3.5 V: ± (2% of channel offset + 1% of full scale)				
Dynamic range	± 4 div from center screen				
DC voltage measurement accuracy* ¹					
Dual cursor	± [(DC gain accuracy)+(resolution)]				
Single cursor	± [(DC gain accuracy)+(offset accuracy)+(resolution/2)]				
RMS noise floor (scope only)	Volts/div	DSO80804A	DSO81004A	DSO81204A	DSO81304A
	5 mV	280 μV	340 μV	390 μV	400 μV
	10 mV	310 μV	380 μV	440 μV	480 μV
	20 mV	470 μV	530 μV	610 μV	720 μV
	50 mV	1.1 mV	1.2 mV	1.4 mV	1.7 mV
	100 mV	2.1 mV	2.3 mV	2.7 mV	3.3 mV
	200 mV	4.1 mV	4.7 mV	5.3 mV	7.2 mV
	500 mV	11 mV	12 mV	14 mV	17 mV
	1 V	21 mV	24 mV	27 mV	34 mV
RMS noise floor (scope with probe)		DSO80804A +	DSO81004A +	DSO81204A +	DSO81304A +
	Volts/div	1168A	1168A	1169A	1169A
	20 mV	2.7 mV	2.7 mV	2.9 mV	3.0 mV
	50 mV	2.8 mV	2.9 mV	3.1 mV	3.4 mV
	100 mV	3.3 mV	3.5 mV	3.8 mV	4.6 mV
	200 mV	5.2 mV	5.6 mV	6.2 mV	7.8 mV
	500 mV	12 mV	13 mV	14 mV	17 mV
	1 V	22 mV	24 mV	27 mV	34 mV

Infiniium 80000 Series Performance Characteristics (continued)

Horizontal

Main timebase range	5 ps/div to 20 s/div real-time, 5 ps/div to 500 ns/div equivalent-time			
Main timebase delay range	-200 s to 200 s real-time, -25 μ s to 200 s equivalent-time			
Delayed timebase range	1 ps/div to current main time scale setting			
Channel deskew	\pm 25 μ s range, 100 fs resolution			
Time scale accuracy ³	\pm 1 ppm pk			
Delta-time measurement accuracy ^{6,7}				
\geq 256 Averages, rms	81304A: 45 fs rms	81204A: 35 fs rms	81004A: 35 fs rms	80804A: 55 fs rms
\geq 256 Averages, peak	500 fs peak			
Averaging disabled, rms	81304A: 0.9 ps rms	81204A: 0.8 ps rms	81004A: 0.8 ps rms	80804A: 0.9 ps rms
Averaging disabled, peak	5 ps peak			
Jitter measurement floor ⁶				
Time interval error	81304A: 0.7 ps rms	81204A: 0.65 ps rms	81004A: 0.65 ps rms	80804A: 0.7 ps rms
Period jitter	81304A: 0.9 ps rms	81204A: 0.8 ps rms	81004A: 0.8 ps rms	80804A: 0.9 ps rms
N-cycle, cycle-cycle jitter	81304A: 1.4 ps rms	81204A: 1.3 ps rms	81004A: 1.3 ps rms	80804A: 1.4 ps rms

Acquisition

Maximum real-time sample rate	40 GSa/s (2 channels simultaneously) 20 GSa/s (4 channels simultaneously)	
Memory depth per channel		
Standard	524,288 (2 channels)	262,144 (4 channels)
Option 001	2,050,000 (2 channels) 65,600,000 at 4 GSa/s (2 channels)	1,025,000 (4 channels) 32,800,000 \leq 2 GSa/s (4 channels)
Sampling modes	Successive single-shot acquisitions	
Real-time	Selectable from 2 to 4096	
Real-time with averaging	2 GSa/s peak detect (4 channels), 4 GSa/s peak detect (2 channels)	
Real-time with peak detect	Real-time boxcar averaging reduces random noise and increases resolution	
Real-time with hi resolution	Full bandwidth on all 4 channels, 262,144 sample points maximum memory.	
Equivalent-time (alternating real-time)	Acquires channels 1 and 3 simultaneously, followed by channels 2 and 4 simultaneously on subsequent triggers at 40 GSa/s each. High sample rate delivers excellent signal fidelity and throughput.	
Segmented memory	Captures bursting signals at maximum sample rate without consuming memory during periods of inactivity. Selectable number of segments up to 16,384 with Option 001 deep memory installed. Minimum intersegment time (the time between acquisitions) of 20 μ s. See on-line help for various performance points.	
Filters	On/off selectable FIR digital filter. Digital signal processing adds points between acquired data points to enhance measurement accuracy and waveform display quality.	
Sin(x)/x Interpolation		

Infiniium 80000 Series Performance Characteristics (continued)

Trigger

Sensitivity ¹	
Internal Low ¹	2.0 div p-p 0 to 5 GHz
Internal High ¹	0.3 div p-p 0 to 4 GHz, 1.0 div p-p 4 to 8 GHz
Auxiliary	DC to 1 GHz: 200 mV p-p into 50 Ω
Level range	
Internal	± 4 div from center screen or ± 4 Volts, whichever is smallest
Auxiliary	± 5 V, also limit input signal to ± 5 V
Sweep modes	Auto, triggered, single
Trigger jitter ^{6,8}	500 fs rms
Trigger holdoff range	100 ns to 320 ms
Trigger actions	Specify an action to occur and the frequency of the action when a trigger condition occurs. Actions include e-mail on trigger and QuickMeas+.
Trigger modes	
Edge	Triggers on a specified slope (rising, falling or alternating between rising and falling) and voltage level on any channel or auxiliary trigger.
Glitch	Triggers on glitches narrower than the other pulses in your waveform by specifying a width less than your narrowest pulse and a polarity. Triggers on glitches as narrow as 500 ps. Glitch range settings: < 1.5 ns to < 160 ms.
Line Pattern	Triggers on the line voltage powering the oscilloscope. Triggers when a specified logical combination of the channels is entered, exited, present for a specified period of time or is within a specified time range. Each channel can have a value of High (H), Low (L) or Don't care (X). Triggers on patterns as narrow as 500 ps.
State	Pattern trigger clocked by the rising, falling or alternating between rising and falling edge of one channel.
Delay by time	The trigger is qualified by an edge. After a specified time delay between 30 ns to 160 ms, a rising or falling edge on any one selected input will generate the trigger.
Delay by events	The trigger is qualified by an edge. After a specified delay between 1 to 16,000,000 rising or falling edges, another rising or falling edge on any one selected input will generate the trigger.
Violation triggers	
Pulse width	Trigger on a pulse that is wider or narrower than the other pulses in your waveform by specifying a pulse width and a polarity. Triggers on pulse widths as narrow as 500 ps. Pulse width range settings: 1.5 ns to 160 ms.
Setup/hold	Triggers on setup, hold or setup and hold violations in your circuit. Requires a clock and data signal on any two input channels as trigger sources. High and low thresholds and setup and/or hold time must then be specified.
Transition	Trigger on pulse rising or falling edges that do not cross two voltage levels in > or < the amount of time specified.

Infiniium 80000 Series Performance Characteristics (continued)

Measurements and math

Waveform measurements	
Voltage	Peak to peak, minimum, maximum, average, RMS, amplitude, base, top, overshoot, preshoot, upper, middle, lower, area.
Time	Period, frequency, positive width, negative width, duty cycle, delta time, rise time, fall time, Tmin, Tmax, channel-to-channel phase.
Frequency domain	FFT frequency, FFT magnitude, FFT delta frequency, FFT delta magnitude, FFT phase.
Statistics	Displays the mean, standard deviation, minimum, maximum and number of measurements value for the displayed automatic measurements.
Histograms	Vertical (for timing and jitter measurements) or horizontal (noise and amplitude change) modes, regions are defined using waveform markers. Measurements included: mean, standard deviation, peak-to-peak value, median, min, max, total hits, peak (area of most hits), and mean \pm 1, 2, and 3 sigma.
Eye-diagram measurements	Eye-diagram measurements include eye height, eye width, eye jitter, crossing percentage, Q factor, and duty-cycle distortion.
Jitter analysis measurements (E2681A EZJIT or N5400A EZJIT Plus Jitter Analysis software)	Cycle-cycle jitter, N-cycle jitter, cycle-cycle + width, cycle-cycle – width, cycle-cycle duty cycle, data rate, unit interval, time interval error data, time interval error clock, setup time, hold time, phase, period, frequency, + width, – width, duty cycle, rise time, fall time.
Mask testing	Allows pass/fail testing to user-defined or Agilent-supplied waveform templates. AutoMask lets you create a mask template from a captured waveform and define a tolerance range in time/voltage or percentage. Test modes include test forever, test to specified time or event limit, and stop on failure. Communications Mask Test Kit option provides a set of ITU-T G.703, ANSI T1.102, and IEEE 802.3 industry-standard masks for compliance testing.
Waveform math	Four functions, select from add, average, differentiate, divide, FFT magnitude, FFT phase, integrate, invert, magnify, min, max, multiply, subtract, versus, common mode, smoothing, high pass filter, low pass filter.
FFT	
Frequency range ⁴	DC up to 20 GHz (at 40 GSa/s) or 10 GHz (at 20 GSa/s)
Frequency resolution	Sample rate/memory depth = Resolution
Best resolution at maximum sample rate	20 kHz
Frequency accuracy	$(1/2 \text{ frequency resolution}) + (1 \times 10^{-6})(\text{signal frequency})$
Signal-to-noise ratio ⁵	60 dB to > 100 dB depending on settings
Window modes	Hanning, flattop, rectangular
Measurement modes	
Automatic measurements	Measure menu access to all measurements, five measurements can be displayed simultaneously.
QuickMeas+	Front-panel button activates five pre-selected or five user-defined automatic measurements.
Drag-and-drop measurement toolbar	Measurement toolbar with common measurement icons that can be dragged and dropped onto the displayed waveforms.
Marker modes	Manual markers, track waveform data, track measurements

Infiniium 80000 Series Performance Characteristics (continued)

Display

Display	8.4 inch diagonal color TFT-LCD
Display	640 pixels horizontally x 480 pixels vertically
Resolution	Up to 12 labels, with up to 100 characters each, can be inserted into the waveform area
Annotation	Can display 1, 2 or 4 waveform grids
Grids	Connected dots, persistence (minimum, variable, infinite), color-graded
Waveform styles	infinite persistence.

Computer system and peripherals, I/O ports

Computer system and peripherals	
Operating system	Windows® XP Pro
CPU	Intel® Pentium® III 1 GHz microprocessor
PC system memory	512 MB
Drives	≥ 20 Gb internal hard drive (optional removable hard drive), CD-R drive on rear panel, standard 3.5 inch 1.44 MB floppy drive
Peripherals	Logitech optical USB mouse and compact keyboard supplied. All Infiniium models support any Windows-compatible input device with a serial, PS/2 or USB interface.

File types	
Waveforms	Compressed internal format, comma and tab separated X and Y pairs or voltage values
Images	BMP, PCX, TIFF, GIF or JPEG

I/O ports	
LAN	RJ-45 connector, supports 10Base-T and 100Base-T. Enables Web-enabled remote control, e-mail on trigger or demand, data/file transfers and network printing.
GPIB	IEEE 488.2, fully programmable.
RS-232 (serial)	COM1, printer and pointing device support.
Parallel	Centronics printer port.
PS/2	2 ports. Supports PS/2 pointing and input devices.
USB	2 ports. Allows connection of USB peripherals like storage devices and pointing devices while the oscilloscope is on.
Video output	15 pin VGA, full color output of scope waveform display.
Dual-monitor video output	15 pin XGA, full color output for using third-party applications.
Auxiliary output	DC (± 2.4 V); square wave (~715 Hz and 456 MHz); trigger output (255 mV p-p into 50 Ω).
Trigger output	5 V 50 Ω back-terminated.
Time base reference output	10 MHz filtered sine wave with all harmonics ≤ -40 dBc. Amplitude into 50 Ω : 800 mV p-p to 1.26 V p-p (4 dBm ± 2 dB) if derived from internal reference. Tracks external reference input amplitude ± 1 dB if applied and selected.
Time base reference input (optional)	Must be 10 MHz, input $Z_0 = 50$ Ω . Minimum 360 mV p-p (-5 dBm), maximum 2.0 V p-p (+10 dBm).

Infiniium 80000 Series Performance Characteristics (continued)

General characteristics

Temperature	Operating: 5° C to +35° C Non-operating: -40° C to +70° C
Humidity	Operating: Up to 95% relative humidity (non-condensing) at +40°C Non-operating: Up to 90% relative humidity at +65°C
Altitude	Operating: Up to 4,600 meters (15,000 feet) Non-operating: Up to 15,300 meters (50,000 feet)
Vibration	Operating: Random vibration 5-500 Hz, 10 minutes per axis, 0.3 g(rms). Non-operating: Random vibration 5-500 Hz, 10 minutes per axis, 2.41 g(rms); resonant search 5-500 Hz, swept sine, 1 octave/minute sweep rate, (0.75g), 5 minute resonant dwell at 4 resonances per axis.
Power	100 - 240 VAC @ 50/60 Hz; maximum input power 550 Watts
Weight	Net: 13 kg (28.5 lbs.) Shipping: 16 kg (35.2 lbs.)
Dimensions (excluding handle)	Height: 216 mm (8.5 in) Width: 437 mm (17.19 in) Depth: 440 mm (17.34 in)
Safety	Meets IEC 61010-1 +A2, CSA certified to C22.2 No.1010.1, self-certified to UL 3111

* Denotes warranted specifications, all others are typical. Specifications are valid after a 30-minute warm-up period, and $\pm 5^{\circ}\text{C}$ from annual calibration temperature.

- 1 Full scale is defined as 8 vertical divisions. Magnification is used below 5 mV/div. Below 5 mV/div, full-scale is defined as 40 mV. The major scale settings are 5 mV, 10 mV, 20 mV, 50 mV, 100 mV, 200 mV, 500 mV, 1 V.
- 2 Vertical resolution for 8 bits = 0.4% of full scale, for 12 bits = 0.024% of full scale.
- 3 Within one year of previous calibration.
- 4 FFT amplitude readings are affected by scope and probe bandwidth limitations and input amplifiers roll-off (e.g. -3 dB roll-off at specified bandwidth of scope/probe).
- 5 The FFT signal to noise ratio varies with volts/division setting, memory depth and use of time or frequency averaging.
- 6 Test signal amplitude ≥ 5 divisions peak-to-peak, test signal rise time ≤ 2 times scope rise time, vertical scale ≥ 20 mV/div, sample rate = 40 GSa/s; sin(x)/x interpolation enabled, measurement threshold = fixed voltage at 50 % level.
- 7 Between two edges on a single channel. Rms value refers to the standard deviation of 256 consecutive measurements performed using an individual instrument.
- 8 Internal trigger. Trigger level contained within full scale display range of trigger channel.
- 9 13 GHz DSP enhanced bandwidth not applicable at 5 mV/div.

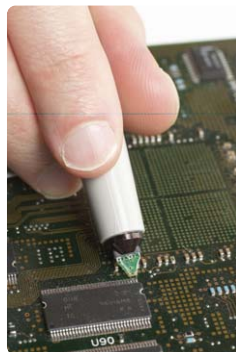
InfiniiMax II Series Performance Characteristics

1169A, 1168A

Bandwidth*	1169A: > 12 GHz (13 GHz typical)	1168A: > 10 GHz
Rise and fall time <ul style="list-style-type: none"> • Probe only • When phase compensated by 80000 Series oscilloscope 	Probe only, 1169A: 28 ps (20 - 80%), 40 ps (10 - 90%) 1169A with DS081204A: 25 ps (20 - 80%), 36 ps (10 - 90%) 1169A with DS081304A: 23 ps (20 - 80%), 33 ps (10 - 90%)	Probe only, 1168A: 34 ps (20 - 80%), 48 ps (10 - 90%) 1168A with DS081004A: 30 ps (20 - 80%), 42 ps (10 - 90%) 1168A with DS080804A: 38 ps (20 - 80%), 54 ps (10 - 90%)
System bandwidth (-3 dB)	1169A with DS081304A: 13 GHz (typical) 1169A with DS081204A: 12 GHz	1168A with DS081004A: 10 GHz 1168A with DS080804A: 8 GHz
Input capacitance ¹	Cm = 0.09 pF Cm is between tips Cg = 0.26 pF Cg is to ground for each tip Cdiff = 0.21 pF Differential mode capacitance = Cm + Cg/2 Cse = 0.35 pF Single-ended mode capacitance = Cm + Cg	
Input resistance*	Differential mode resistance = 50 kΩ ± 2% Single-ended mode resistance = 25 kΩ ± 2%	
Input dynamic range	3.3 V peak to peak, ± 1.65 V	
Input common mode range	6.75 V peak to peak dc to 100 Hz; 1.25 V peak to peak > 100 Hz	
Maximum signal slew rate	25 V/ns when probing a single-ended signal 40 V/ns when probing a differential signal	
DC attenuation	3.45:1	
Zero offset error referred to input	± 1.5 mV	
Offset range	± 16.0 V when probing single-ended	
Offset gain accuracy	< ± 1% of setting when probing single-ended	
Noise referred to input	2.5 mV rms, probe only	
Propagation delay	~6 ns (this delay can be deskewed relative to other signals)	
Maximum input voltage	30 V peak, CAT I	
ESD tolerance	> 8 kV from 100 pF, 300 Ω HBM	

* Denotes warranted specifications, all others are typical.

¹ Measured using the probe amplifier and N5381A solder-in differential probe head.



Ordering Information

80000 Series Infiniium oscilloscopes

Model	Bandwidth	Channels	Sample rate	Standard acquisition memory
DSO81304A	12 - 13 GHz	4	40 GSa/s (2 channels) 20 GSa/s (4 channels)	524 kpts (2 channels) 262 kpts (4 channels)
DSO81204A	12 GHz	4	40 GSa/s (2 channels) 20 GSa/s (4 channels)	524 kpts (2 channels) 262 kpts (4 channels)
DSO81004A	10 GHz	4	40 GSa/s (2 channels) 20 GSa/s (4 channels)	524 kpts (2 channels) 262 kpts (4 channels)
DSO80804A	8 GHz	4	40 GSa/s (2 channels) 20 GSa/s (4 channels)	524 kpts (2 channels) 262 kpts (4 channels)

Note:

The DSO81304A uses DSP boost software to achieve 13 GHz bandwidth. It also adds a valuable DSP noise reduction feature to reduce noise at bandwidths of 10, 8, 6, 4, 2, and 1 GHz. The non-DSP boosted bandwidth of the DSO81304A is 12 GHz. The DSO81204A, DSO81004A, and DSO80804A have non-DSP boosted bandwidth specifications.

The above models include:

- Optical USB mouse
- Compact keyboard
- User's quick-start guide
- Documentation CD (service guide, programmer's guide, programmer's quick reference guide)
- Accessory pouch
- Power cord
- High-performance calibration cable
- E2655B probe deskew and performance verification kit
- Two 54855-67604 BNC-compatible to precision 3.5 mm (f) adapters
- One-year warranty.

Note: No probes are included with the 80000 Series oscilloscopes. The InfiniiMax II Series probes must be purchased separately.

After-Burner Upgrade program

If you find you need a little more speed after you purchase your Infiniium 80000 Series oscilloscope, the After-Burner Upgrade program is available. This upgrade program allows you to upgrade any 80000 Series scope to a higher bandwidth model, protecting your valuable Infiniium oscilloscope and probing system investment over the long term.



Upgrade	Description	Return to service center required
N5398A	DSO81204A to DSO81304A upgrade (12 GHz to 13 GHz)	No
N5398B	DSO81004A to DSO81204A upgrade (10 GHz to 12 GHz)	Yes
N5398C	DSO80804A to DSO81004A upgrade (8 GHz to 10 GHz)	Yes

Note: Order as many upgrades as needed to reach the desired final bandwidth of the instrument. For example, to upgrade from a DSO80804A to DSO81304A, order N5398C, N5398B, and N5398A.

Ordering Information (continued)

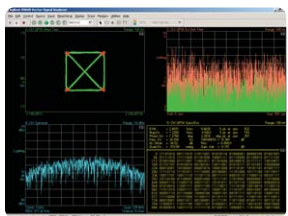
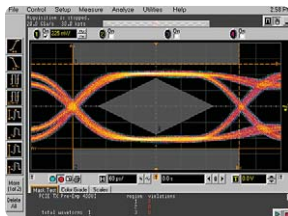
80000 Series Infiniium oscilloscope options and accessories

Options	Description
001	2 M (2 channels), 1 M (4 channels) memory upgrade 64 M (2 channels at 4 GSa/s) or 32 M (4 channels ≤ 2 GSa/s)
002	EZJIT jitter analysis software (installed at the factory).
003	High-Speed Serial Data Analysis/Mask Testing with clock recovery and 8b/10b decoding (installed at the factory).
004	EZJIT Plus jitter analysis software (installed at the factory).
005	Noise reduction software (installed at the factory). This software is included standard for DS081304A.
006	My Infiniium Integration Package (installed at the factory).
017	20 Gb removable hard disk drive. Replaces internal hard disk with a removable hard disk. Order the N5390A for additional hard disk drive cartridges.
021	Low-Speed Serial Data Analysis (installed at the factory).
093	10 MHz time base reference input. (see page 16)
Instrument options	Description
1CM (E2609B)	Rack-mount kit.
Service options	Description
A6J	ANSI Z540-compliant calibration.
Accessories	Description
N5404A	After-purchase memory upgrade. Order option 001 when purchasing a new Infiniium oscilloscope. The N5404A is for customers who own an oscilloscope and wish to upgrade the acquisition memory.
E2681A	After-purchase EZJIT jitter analysis software for Infiniium oscilloscopes. Order option 002 when purchasing a new Infiniium oscilloscope. The E2681A is for customers who own an oscilloscope and wish to upgrade to add the EZJIT software.
N5400A	After-purchase EZJIT Plus jitter analysis software for Infiniium oscilloscopes. The N5400A is for customers who own a 54850 or DS080000 Series oscilloscope and wish to upgrade to add the EZJIT Plus software.
N5401A	After-purchase EZJIT Plus jitter analysis software for existing installations of E2681A EZJIT on Infiniium 54850 and DS080000 Series Infiniium oscilloscopes. Adds RJ/DJ separation displays and analysis capability.
E2690A	After-purchase Advanced Timing Interval and Jitter Analysis software for Infiniium oscilloscopes. Available in one scope license and four scope license versions.
N5398A	DS081204A to DS081304A upgrade software. Also includes DSP noise reduction feature to reduce noise at bandwidths of 10, 8, 6, 4, 2, and 1 GHz.
N5403A	Noise reduction software only. DSP noise reduction feature to reduce noise at bandwidths of 10, 8, 6, 4, 2, and 1 GHz. Included standard for DS081304A.
N5390A	Additional 20 Gb hard disk drive cartridge for Infiniium option 017.

Ordering Information (continued)

80000 Series Infiniium oscilloscope options and accessories (continued)

Accessories (continued)	Description
E2654A	EZ Probe Positioner®: includes base, joystick, and articulating arm.
E2655B	Additional probe deskew/performance verification kit for InfiniiMax probes.
54855-67604	18 GHz BNC-compatible to precision 3.5 mm (f) adapter. Allows highest fidelity connection of 3.5 mm or SMA cables.
E2688A	High-Speed Serial Data Analysis/Mask Testing with Clock Recovery. Easily perform mask testing and characterize serial data streams that employ embedded clocks. The E2688A provides mask templates and clock recovery for verifying compliance to computer, communication and datacom standards. You can even characterize proprietary serial buses with the built-in, general purpose golden PLL clock recovery. Features include: <ul style="list-style-type: none">• Golden PLL clock recovery• Set up wizard to configure the clock recovery• Real-time eye diagram display with eye-mask unfolding• Recovered clock display• Time interval error (TIE) jitter measurement with statistics on the data stream• Mask template loading• 8b/10b decode with symbol trigger and search Standard masks include: <ul style="list-style-type: none">• PCI Express (2.5 Gbps)• Serial ATA (1.5 Gbps)• Fibre Channel Electrical (1.0625, 2.125, 4.25 Gbps)• Ethernet IEEE 802.3 (10/100/1000Base-T)• Serial Attached SCSI, XAUI
89601A	Vector Signal Analysis Software. Agilent Infiniium oscilloscopes team up with the 89601A Vector Signal Analysis software to provide powerful, flexible, wideband signal analysis with up to 13 GHz bandwidth for applications including wideband communications and modulated radar. Features include: <ul style="list-style-type: none">• Measurement bandwidth up to 13 GHz• Flexible analog and digital demodulation supports the most advanced, complex modulation formats• Deep memory in the Infiniium oscilloscopes allows excellent dynamic range and frequency resolution• Flexible, powerful displays including spectrogram provide rapid insight into dynamic signal behavior• For signal integrity and jitter measurements up to 13-GHz bandwidth the high performance Infiniium DSO 80000 Series digital oscilloscopes offer InfiniiMax active probes, MegaZoom deep memory, and 40 GSa/s sample rates



Ordering Information (continued)

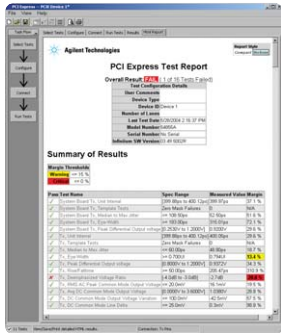
80000 Series Infiniium oscilloscope options and accessories (continued)

Accessories (continued)

Description

N5393A

PCI Express Electrical Performance Validation and Compliance Software.



The Agilent Technologies N5393A PCI Express electrical performance validation and compliance software provides you with a fast and easy way to verify and debug your PCI Express designs. The PCI Express electrical test software allows you to automatically execute PCI Express electrical checklist tests, and it displays the results in a flexible report format.

The N5393A PCI Express electrical test software utilizes the clock recovery method used in the official PCI-SIG Signal Quality Test Methodology (“SigTest”) application, ensuring that your test results are consistent with results from the SigTest application.

The PCI Express electrical performance validation and compliance software performs a wide range of electrical tests as per the PCI Express 1.0a electrical specifications for add-in cards and motherboard systems as documented in section 4 of the base specification and section 4 of the card electromechanical specification.

Requires the E2688A serial data analysis software and one of the PCI-SIG approved compliance test fixtures (CBB or CLB).

Features:

- Test setup wizard guides you through test selection, configuration, connection, execution, and results reporting.
- Wide-range of electrical tests are performed, significantly more than SigTest.
- PCI-SIG SigTest clock recovery algorithm is used to ensure consistency with SigTest.
- Measurement connection setups are displayed when you must change the test setup.
- Oscilloscope setup is automatically configured for each test.
- Test results report formally documents your test configuration, measurements made, pass/fail status, and waveforms.
- Pass/fail margin analysis provides an indication of how close your device is to meeting a test specification.

N5392A

Ethernet Electrical Performance Validation and Compliance Software for Infiniium 54830, 54850, and 80000 Series Oscilloscopes.



The Agilent Technologies N5392A Ethernet electrical performance validation and compliance software for Infiniium 54830 and 54850 Series oscilloscopes provides you with a fast and easy way to verify and debug your 1000Base-T, 100Base-TX and 10Base-T Ethernet designs. The Ethernet electrical test software allows you to automatically execute Ethernet physical-layer (PHY) electrical tests, and it displays the results in a flexible report format. In addition to the measurement data, the report provides a margin analysis that shows how closely your device passed or failed each test.

The Ethernet electrical performance validation and compliance software performs a wide range of electrical tests to meet the Ethernet electrical specifications for 1000Base-T, 100Base-TX and 10Base-T systems as documented in the IEEE 802.3-2002 and ANSI X3.263-1995 standards.

Features:

- Test setup wizard guides you through test selection, configuration, connection, execution, and results reporting.
- Wide-range of electrical tests are performed for 1000Base-T, 100Base-TX and 10Base-T standards.
- Measurement connection setups are displayed when you must change the test setup.
- Oscilloscope setup is automatically configured for each test.
- Test results report formally documents your test configuration, measurements made, pass/fail status, and waveforms.
- Pass/fail margin analysis provides an indication of how close your device is to meeting a test specification.

Ordering Information (continued)

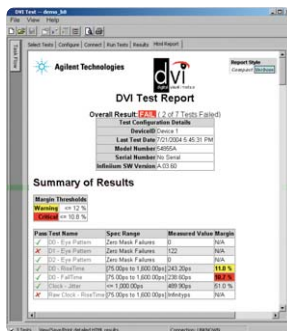
80000 Series Infiniium oscilloscope options and accessories (continued)

Accessories (continued)

Description

N5394A

DVI Electrical Performance Validation and Compliance Software for Infiniium 54850 and 80000 Series Oscilloscope.



The Agilent Technologies N5394A DVI electrical performance validation and compliance software provides you with a fast and easy way to verify and debug your digital visual interface (DVI) designs for add-in cards, cables and motherboard systems. The DVI electrical test software allows you to automatically execute DVI electrical checklist tests, and it displays the results in a flexible report format. In addition to the measurement data, the report provides a margin analysis that shows how closely your device passed or failed each test.

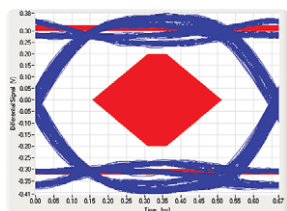
The N5394A DVI electrical performance validation and compliance software offers the four fundamental DVI electrical tests. The software automatically configures the oscilloscope for each test, and it provides an informative results report that includes margin analysis indicating how close your product is to passing or failing that specification.

Features:

- Test setup wizard guides you through test selection, configuration, connection, execution, and results reporting.
- Wide-range of electrical tests are performed.
- Uses the Silicon Graphics DVI Compliance test fixtures for measurements and hardware clock recovery.
- Measurement connection setups are displayed when you must change the test setup.
- Oscilloscope setup is automatically configured for each test.
- Test results report formally documents your test configuration, measurements made, pass/fail status, and waveforms.
- Pass/fail margin analysis provides an indication of how close your device is to meeting a test specification.

Download

Serial ATA Signal Quality Compliance Test.



If you develop Serial ATA host bus adapters or devices and would like to perform compliance testing to the standard, the sigtest program provides the following features:

- program runs inside Infiniium and tests host bus adapters and devices for compliance to Serial ATA standard, as issued by Serial ATA working group
- written test procedure for Agilent Infiniium 81004A and Agilent 81134A pulse/pattern generator
- software automatically sets up the oscilloscope, allows user to transfer setups to pattern generator, acquires waveform data and launches eye measurement (sigtest)
- includes support for OOB (out of band) signal testing
- solution has been evaluated and proven at Serial ATA plugfests

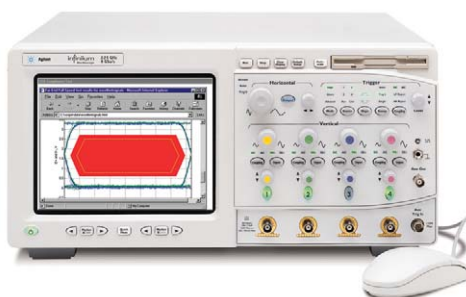
Program can be downloaded for free from the following URL:
<http://www.cos.agilent.com/scope-apps/sata.html>

Ordering Information (continued)

80000 Series Infiniium oscilloscope options and accessories (continued)

Accessories (continued)	Description
Partner Product	IEEE-1394 Pre-Compliance Test Option. A pre-compliance test solution is available from Quantum Parametrics for use in conjunction with Agilent 80000 Series oscilloscopes. This test solution automates the compliance test process for the IEEE-1394 standard. See http://www.quantumparametrics.com for additional information.

E2683A USB 2.0 Compliance Test Option.



The Agilent USB 2.0 compliance test option makes USB signal integrity testing as simple as capturing the signals with your oscilloscope. Infiniium has significantly reduced the work associated with USB compliance testing by eliminating the need to transfer scope waveforms to a PC. The Infiniium USB 2.0 test option features run-time MATLAB embedded in the scope for use with the USB signal integrity scripts, providing a one-box solution. The USB-IF compliance program recognizes Infiniium as a recommended scope for use in pre-compliance testing. In addition, all MATLAB scripts used with the USB 2.0 test option come from the USB-IF organization.

This option works with all Infiniium 80000 Series oscilloscopes. Included with the E2683A are USB-IF MATLAB scripts and Signal Quality Inrush Droop/Drop (SqIDD) test fixture, needed for low/full speed testing. Additional SqIDD test fixtures can be purchased as the E2646A.

For USB 2.0 High Speed testing, order the E2683A test option as well as the E2649A for a complete set of six fixtures and power supply.

For USB 2.0 High Speed testing, a differential probe is required. Please order an InfiniiMax probe amplifier, along with the E2678A differential socketed probe head.

The USB 2.0 Compliance Test Procedure is located at <http://www.usb.org/developers/docs>

Ordering Information (continued)

80000 Series Infiniium oscilloscope options and accessories (continued)

Accessories (continued)

Description

E2697A

High Impedance Adapter (Includes 500 MHz Passive Probe)

The E2697A high impedance adapter allows connection of probes that require a high impedance input (e.g., passive probes, current probes) to the Infiniium 80000 Series of high-performance oscilloscopes. The E2697A high impedance adapter extends the capability of Agilent Infiniium high-performance oscilloscopes, making them ideal for a variety of general-purpose measurements such as power supplies, inverters, semiconductor measurements, etc. The E2697A provides switchable ac/dc coupling, as well as 10:1 and 1:1 attenuation settings.



Specifications/Characteristics

Bandwidth	Analog BW (–3 dB) System Bandwidth	500 MHz (with supplied 10073C passive probe) 500 MHz (with 10073C passive probe and 80000 Series oscilloscope)
DC attenuation	1.16:1 11.6:1	E2697A internal attenuator at 1:1 (at scale settings > 200 mV/div signal size limited by input dynamic range) E2697A internal attenuator at 10:1 (at scale settings > 200 mV/div signal size limited by input dynamic range)
Input Dynamic Range	E2697A internal attenuator setting of 1:1 E2697A internal attenuator setting of 10:1	± 0.8 V ± 8 V
Input Dynamic Range with 10073C passive probe	E2697A internal attenuator setting of 1:1 E2697A internal attenuator setting of 10:1	± 8 V ± 80 V
Input Impedance*	1 MΩ ± 1% (~12 pF)	
Input Coupling	dc, ac (7 Hz)	
Maximum Input Voltage	± 100V [dc + ac] [ac < 10 kHz], CAT I	
Offset Range	E2697A internal attenuator setting of 1:1 E2697A internal attenuator setting of 10:1	± 5 V ± 50 V
Dc Gain Accuracy ¹	± 1.5% of full scale	
Offset Accuracy ¹	± (1.5% of channel offset + 1.5% of full scale)	

* Denotes warranted specifications, all others typical. Specifications are valid after a 30 minute warm-up period and ± 5 °C from calibration temperature.

¹ Full scale is defined as 8 vertical divisions.

Ordering Information (continued)

80000 Series Infiniium oscilloscope options and accessories (continued)

Accessories (continued)

Description

E2625A

Communication Mask Test Kit.

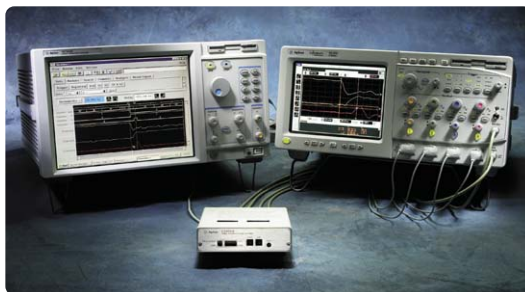


Take the frustration out of communications testing and prove your designs conform to industry standards with the E2625A Communications Mask Test Kit option. Infiniium's familiar Windows interface makes it easy for you to access the masks you need and configure your tests.

In addition, the E2625A Communication Mask Test Kit comes with a set of electrical communication adapters to ensure convenient, reliable and accurate connections to your device under test. Included are more than 20 industry standard ANSI T1.102 and ITU-T G.703 communication signal mask templates.

E5850A

Logic Analyzer/Oscilloscope Time-Correlation Fixture.



Now you can more effectively verify and track down problems between the analog and digital portions of a design. Easily make time-correlated measurements between an Agilent 16900 Series logic analysis system and an Infiniium Series oscilloscope. With the E5850A Time-Correlation Fixture, you can trigger the Infiniium from the logic analyzer (or vice versa), and automatically deskew the waveforms. The Infiniium time markers and the 16900 series time markers are time-Correlated and track each others. You can relate information on the oscilloscope and the logic analyzer precisely.

Foot Switch

Kinesis Savant 3-Action Programmable Foot Switch P/N FS004PS2.

Allows you to easily program the 3-action foot pedals to perform the following scope functions: run, stop, toggle between run and stop, save waveform, save screenshot, measure any five waveform parameters and recall an instrument setup.

See <http://www.kinesis-ergo.com/> for additional information and ordering instructions.

Ordering Information (continued)

80000 Series Infiniium oscilloscope options and accessories (continued)

Accessories (continued)

Description

1184A

Testmobile.

Agilent's 1184A testmobile provides a convenient solution for your portability and storage needs. The 1184A includes a drawer for accessories and a keyboard tray with a mouse extension for either right- or left-handed operation.



E2682A

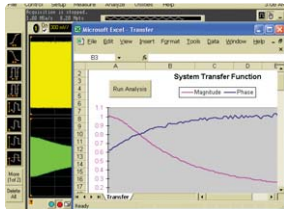
VoiceControl Option.



If you're making measurements on target systems with densely packed ICs, your hands are tied up holding probes, making it difficult to turn knobs and press buttons on the front panel of your scope. Infiniium's award-winning VoiceControl option solves this problem. Just speak into the collar-mounted microphone to operate your Infiniium's front-panel controls without using your hands. Simply tell the scope what you want it to do, using natural English-language commands, such as "set channel one to 1 volt per division." The VoiceControl system does not require the scope to be trained to understand a particular user.

E2699A

My Infiniium Integration Package

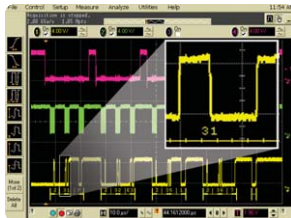


My Infiniium allows you to extend the power of your Windows XP-based Infiniium oscilloscope by letting you launch customized applications, such as those written for Agilent VEE Pro, NI LabVIEW[®] or Microsoft Excel, directly from the oscilloscope's front panel or graphical user interface.

For more detailed information, please request Agilent publication number 5988-9934EN.

N5391A

Low-Speed Serial Data Analysis Software.



Provides a fast and easy way to debug Inter-Integrated Circuit (I²C) and 2-wire or 3-wire Serial Peripheral Interface (SPI) serial communication busses. The Low-Speed SDA software, when used with the Agilent 54830 Series, 54850 Series, or 80000 Series Infiniium oscilloscopes, provides the ability to capture and automatically display decoded serial data in numerical format synchronized with the analog or digital waveform view of I²C or SPI serial data streams.

Ordering Information (continued)

InfiniiMax II Series probing system

InfiniiMax II probe amplifiers	Description
1169A	12 GHz InfiniiMax probe amp – order one or more probe heads.
1168A	10 GHz InfiniiMax probe amp – order one or more probe heads.

InfiniiMax II probe heads	Recommended for use with InfiniiMax II probe amplifiers
N5380A	InfiniiMax II 12 GHz differential SMA adapter. Includes semi-rigid coax to change span between SMA connectors.
N5381A	InfiniiMax II 12 GHz differential solder-in probe head and accessories. Includes wire for replacement leads. Order 01169-21306 for 0.005 inch or 01169-81301 for 0.007 inch replacement nickel wire.
N5382A	InfiniiMax II 12 GHz differential browser. Includes wire for replacement leads. Order 01169-21304 for 0.005 inch replacement steel wire.

InfiniiMax I probe heads*	Can be used with InfiniiMax II probe amplifiers with limitations
E2675A	InfiniiMax differential browser probe head and accessories. Includes 20 replaceable tips and ergonomic handle. Order E2658A for replacement accessories.
E2676A	InfiniiMax single-ended browser probe head and accessories. Includes 2 ground collar assemblies, 10 replaceable tips, a ground lead socket and ergonomic browser handle. Order E2663A for replacement accessories.
E2677A	InfiniiMax differential solder-in probe head and accessories. Includes 20 full bandwidth and 10 medium bandwidth damping resistors. Order E2670A for replacement accessories.
E2678A	InfiniiMax single-ended/differential socketed probe head and accessories. Includes 48 full bandwidth damping resistors, 6 damped wire accessories, 4 square pin sockets and socket heatshrink. Order E2671A for replacement accessories. Order E5381-82103 for 34 damped wire accessories only.
E2679A	InfiniiMax single-ended solder-in probe head and accessories. Includes 16 full bandwidth and 8 medium bandwidth damping resistors and 24 zero ohm ground resistors. Order E2672A for replacement accessories.
E2695A	Differential SMA probe head. Includes semi-rigid coax to change span between SMA connectors.

* (See page 3 for specifications and limitations when used with InfiniiMax II Series probe amplifiers.)

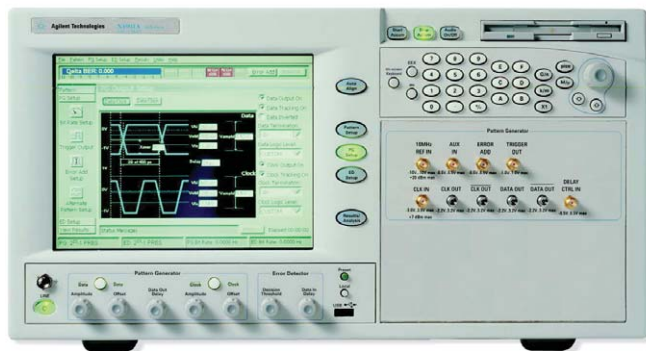
Adapters	Description
N1022A	Adapts 113x/115x/116x active probes to 86100 Infiniium DCA.

Ordering Information (continued)

InfiniiMax II Series probing system (continued)

Other compatible probes	Description
1144A	800 MHz active probe. Requires 1142A probe power supply when used with Infiniium scopes. Requires 01144-61604 probe power extender when using two or more 1144A active probes.
1145A	2-channel, 750 MHz active probe. Requires 1142A power supply when used with Infiniium oscilloscopes.
1156A	1.5 GHz single-ended active probe for Infiniium scopes.
1157A	2.5 GHz single-ended active probe for Infiniium scopes.
1158A	4 GHz single-ended active probe for Infiniium scopes.
54006A	7.5 GHz passive resistive divider probe – 10:1 (500 ohms) or 20:1 (1 kohms).

Ordering Information (continued)



The Agilent Serial BERT generator N4901B (N4902B) option 200 provides high speed digital stimulus to your device with PRBS or memory based pattern from 150 Mb/s up to 13.5 Gb/s (7 Gb/s). For mor information, see www.agilent.com/find/pulse-generators.

Related Literature

Publication Title	Publication Type	Publication Number
<i>Infiniium 54850 Series Oscilloscopes</i>	Data Sheet	5988-7976ENUS
<i>Infiniium 54830 Series Oscilloscopes</i>	Data Sheet	5988-3788ENUS
<i>E2681A EZJIT Jitter Analysis Software</i>	Data Sheet	5989-0109EN
<i>N5400 EZJIT Plus Jitter Analysis Software</i>	Data Sheet	5989-1487EN/ENUS
<i>E2690A Timing Interval & Jltter Analysis Software</i>	Data Sheet	5988-9723EN
<i>E2688A High-Speed Serial Data Analysis Software</i>	Data Sheet	5989-0108EN
<i>Using Agilent InfiniiMax Probes with Test Equipment other than Agilent Infiniium Oscilloscopes</i>	Configuration Guide	5989-1869EN
<i>PCI-Express Test Package</i>	Data Sheet	5989-1240EN
<i>Ethernet Compliance Test Package</i>	Data Sheet	5989-1527EN
<i>E2683A USB 2.0 Compliance Test Software</i>	Data Sheet	5989-0236EN
<i>Infiniium 54800 Series Oscilloscope Probes, Accessories and Options</i>	Selection Guide	5968-7141EUS
<i>Advantages and Disadvantages of Using DSP Filtering on Oscilloscope Waveforms</i>	Application Note 1494	5989-1145EN
<i>Understanding and Using Offset in InfiniiMax Active Probes</i>	Application Note 1451	5988-9264EN
<i>Finding Sources of Jitter with Real-Time Jitter Analysis</i>	Application Note 1448-2	5988-9740EN

Product Web site

For the most up-to-date and complete application and product information, please visit our product Web site at:

www.agilent.com/find/infiniimaxll

MATLAB® is a U.S. registered trademark of Math Works, Inc.
 Windows® is a U.S. registered trademark of Microsoft Corporation.
 Intel® and Pentium® is a U.S. registered trademark of Intel Corporation.
 EZ-Probe Positioner® is a registered trademark of Cascade Microtech.

Agilent Technologies' Test and Measurement Support, Services, and Assistance

Agilent Technologies aims to maximize the value you receive, while minimizing your risk and problems. We strive to ensure that you get the test and measurement capabilities you paid for and obtain the support you need. Our extensive support resources and services can help you choose the right Agilent products for your applications and apply them successfully. Every instrument and system we sell has a global warranty. Two concepts underlie Agilent's overall support policy: "Our Promise" and "Your Advantage."

Our Promise

Our Promise means your Agilent test and measurement equipment will meet its advertised performance and functionality. When you are choosing new equipment, we will help you with product information, including realistic performance specifications and practical recommendations from experienced test engineers. When you receive your new Agilent equipment, we can help verify that it works properly and help with initial product operation.

Your Advantage

Your Advantage means that Agilent offers a wide range of additional expert test and measurement services, which you can purchase according to your unique technical and business needs. Solve problems efficiently and gain a competitive edge by contracting with us for calibration, extra-cost upgrades, out-of-warranty repairs, and on-site education and training, as well as design, system integration, project management, and other professional engineering services. Experienced Agilent engineers and technicians worldwide can help you maximize your productivity, optimize the return on investment of your Agilent instruments and systems, and obtain dependable measurement accuracy for the life of those products.



Agilent Email Updates

www.agilent.com/find/emailupdates

Get the latest information on the products and applications you select.



Agilent Direct

www.agilent.com/find/agilentdirect

Quickly choose and use your test equipment solutions with confidence.

Agilent T&M Software and Connectivity

Agilent's Test and Measurement software and connectivity products, solutions and developer network allows you to take time out of connecting your instruments to your computer with tools based on PC standards, so you can focus on your tasks, not on your connections. Visit www.agilent.com/find/connectivity for more information.

For more information on Agilent Technologies' products, applications or services, please contact your local Agilent office. The complete list is available at:

www.agilent.com/find/contactus

Phone or Fax

United States:

(tel) 800 829 4444
(fax) 800 829 4433

Canada:

(tel) 877 894 4414
(fax) 800 746 4866

China:

(tel) 800 810 0189
(fax) 800 820 2816

Europe:

(tel) 31 20 547 2111

Japan:

(tel) (81) 426 56 7832
(fax) (81) 426 56 7840

Korea:

(tel) (080) 769 0800
(fax) (080) 769 0900

Latin America:

(tel) (305) 269 7500

Taiwan:

(tel) 0800 047 866
(fax) 0800 286 331

Other Asia Pacific Countries:

(tel) (65) 6375 8100
(fax) (65) 67556 0042
Email: tm_ap@agilent.com

Contacts revised: 1/12/05

Product specifications and descriptions in this document subject to change without notice.

© Agilent Technologies, Inc. 2005

Printed in USA March 17, 2005

5989-1487EN

www.agilent.com/find/infiniimaxII

