

InfiniiVision 4000 X-Series Oscilloscopes

Data sheet



Oscilloscope Experience Redefined:
Experience the speed, usability and integration

Anticipate — Accelerate — Achieve



Agilent Technologies

Imagine an oscilloscope that sees everything, triggers on anything, has the ease-of-use of a tablet device...and grows with your projects.

The 4000 X-Series oscilloscopes are engineered for next-generation performance, delivering waveform update rates 20 times faster than the competition to display the most signal detail. An industry-leading 12.1-inch capacitive touch screen with innovative hardware-based InfiniiScan Zone touch triggering provides the most intuitive interface to get you answers faster. The 4000 X-Series provides maximum investment protection with fully upgradable 5-instruments-in-1.

Experience the Speed

Anomalies and elusive events are the toughest to debug. The 4000 X-Series oscilloscope redefines your debugging experience with MegaZoom IV smart memory technology. The industry-leading 1-million-waveforms-per-second update rate, means you see more of your signal behavior and can feel more confident in your design.

Experience the Usability

You may be surprised just how easy it is to use the InfiniiVision 4000 X-Series. A 12.1-inch capacitive touch screen – the industry’s largest – works just like your favorite tablet or smart phone, so debugging your devices is faster than ever before. Innovative InfiniiScan Zone touch triggering makes triggering on anything a snap. Just draw a box around signals of interest and the oscilloscope triggers on them. So, if you can see it, you can trigger on it.

Experience the Integration

The 4000 X-Series further redefines your oscilloscope experience by integrating the capabilities of five instruments in one: oscilloscope channels, logic channels, digital voltmeter (DVM), dual-channel WaveGen function/arbitrary waveform generator, and serial protocol analyzer including USB. All are upgradable, including bandwidth, for the ultimate investment protection.

4000 X-Series - Oscilloscope experience redefined:

Key features:

- Experience the speed:
 - One million waveforms per second update rate
 - MegaZoom IV smart memory technology
 - Standard segmented memory
- Experience the usability:
 - Industry’s first capacitive touch screen
 - Industry’s largest 12-inch display
 - InfiniiScan Zone touch trigger
- Experience the integration:
 - Industry’s first 5 instruments in 1
 - Industry’s first fully upgradable including bandwidth to 1.5 GHz
 - Industry’s leading application solutions



Figure 1: MegaZoom IV smart memory technology enables the speed, usability, and integration.



Overview of Agilent InfiniiVision X-Series oscilloscopes

	InfiniiVision 4000 X-Series	InfiniiVision 3000 X-Series	InfiniiVision 2000 X-Series
Analog channels	2 and 4	2 and 4	2 and 4
Bandwidth (upgradable)	200, 350, 500 MHz, 1 GHz, 1.5 GHz	100, 200, 350, 500 MHz, 1 GHz	70, 100, 200 MHz
Digital channels	16 (MSO models or upgrade)	16 (MSO models or upgrade)	8 (MSO models or upgrade)
Maximum sample rate	5 GSa/s	5 GSa/s (1-GHz models) 4 GSa/s (100-500 MHz models)	2 GSa/s
Maximum memory depth	4 Mpts (standard)	2 Mpts (standard), 4 Mpts (option)	100 kpts (standard), 1 Mpts (option)
Waveform update rate	> 1,000,000 waveforms per second	> 1,000,000 waveforms per second	> 50,000 waveforms per second
Display	12.1-inch capacitive touch display	8.5-inch display	8.5-inch display
InfiniiScan Zone touch trigger	Standard	No	No
WaveGen 20-MHz function/ arbitrary waveform generator	Dual-channel AWG (option)	Single-channel AWG (option)	Single-channel function (option)
Integrated digital voltmeter	Yes (option)	Yes (option)	Yes (option)
Search and navigate	Yes	Yes	No
Serial protocol analysis	Yes (optional: ARINC 429, CAN, FlexRay, I ² C, I ² S, LIN, MIL-STD-1553, SPI, UART/RS232, USB 2.0)	Yes (optional: ARINC 429, CAN, FlexRay, I ² C, I ² S, LIN, MIL-STD-1553, SPI, UART/RS232)	Yes (optional: CAN, I ² C, LIN, SPI, UART/RS232)
Segmented memory	Standard	Yes (option)	Yes (option)
Mask/limit testing	Yes (option)	Yes (option)	Yes (option)
Power analysis	Yes (option)	Yes (option)	No
USB 2.0 signal quality test	Yes (option)	No	No
HDTV analysis	Yes (option)	Yes (option)	No
Advanced waveform math	Standard	Yes (option)	No
Connectivity	Standard USB2.0, LAN, video out (GPIB option)	Standard USB2.0 (LAN/Video option) (GPIB option)	Standard USB2.0 (LAN/Video option) (GPIB option)

Need more memory, bandwidth, analysis or bits?

Consider the Infiniium 9000A and 9000 H-Series

- 600 MHz, 1 GHz, 2.5 GHz, 4 GHz (A-Series)
- 250 MHz, 500 MHz, 1 GHz, 2 GHz (H-Series)
- Up to 20 GSa/s (A Series), up to 10 GSa/s (H-Series)
- 20 Mpts (A Series), 50 Mpts (H-Series) per channel standard
- Up to 1 Gpts optional (A Series), up to 500 Mpts optional (H-Series)
- 4 channel + 16 digital channel (MSO or upgrade)
- Up to 12 bits of vertical resolution (H-Series)
- Industry's largest 15-inch touch display
- Industry's only serial protocol viewer with multi-tab viewing
- Widest range of applications including serial compliance, jitter analysis and more.

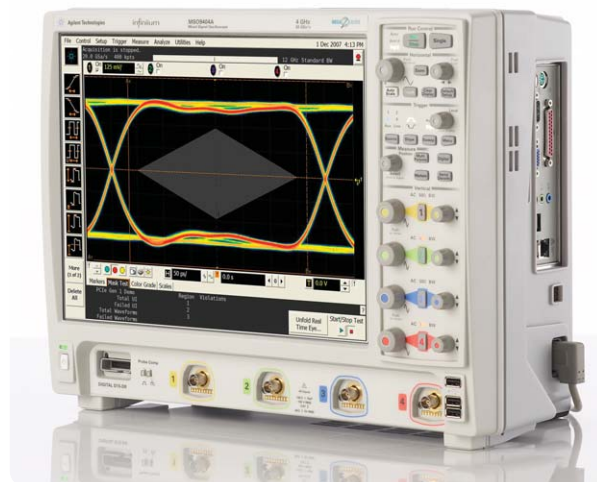


Figure 2: Infiniium 9000 Series oscilloscope.

See www.agilent.com/find/9000 and www.agilent.com/find/9000H for details.

One million waveforms per second update rate

If you can't see the problem, it is hard to troubleshoot it. With an industry-leading one million waveforms per second update rate, the InfiniiVision 4000 X-Series gives you the highest probability of capturing random and infrequent events that you would miss on an oscilloscope with a lower waveform update rate.

Powered by MegaZoom IV smart memory technology, the InfiniiVision 4000 X-Series not only lets you see more waveforms, but it has the uncompromised ability to find the most difficult problems in your design. Unlike other oscilloscopes, uncompromised ability means:

- Always-fast, responsive operation
- No slowdown with logic channels on
- No slowdown with protocol decoding on
- No slowdown with math functions turned on
- No slowdown with measurements turned on

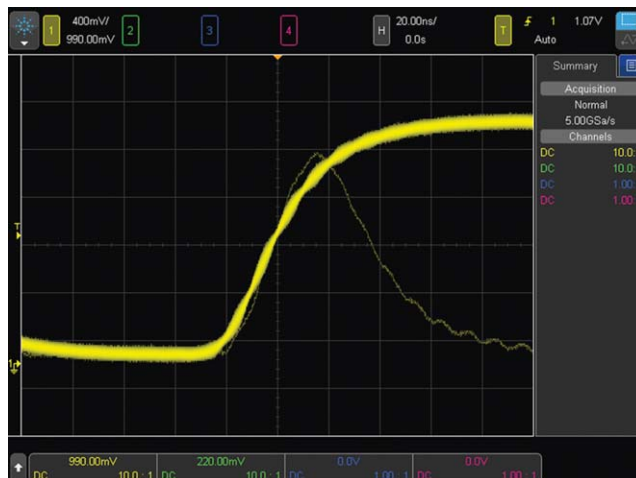


Figure 3: The 4000 X-Series captures a glitch occurring once in a million waveform cycles.

What is waveform update rate and why is it important?

As oscilloscopes acquire data, process it, and plot it to the screen, there is inevitable "dead time," or the time oscilloscopes miss signals completely. In general, the faster the waveform update rate, the shorter the dead time. The shorter the dead time, the more likely an oscilloscope is to capture anomalies and infrequent events. This is why it is critical to select an oscilloscope with a fast waveform update rate.

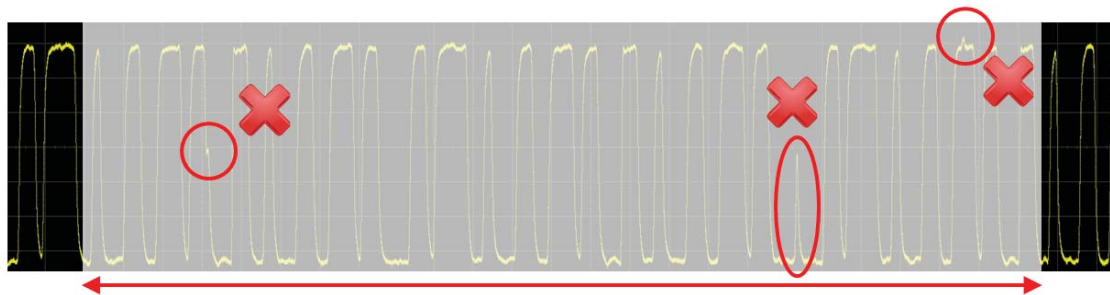


Figure 4: Other vendor's oscilloscope with 50,000 waveforms/second. A long dead time decreases your chances of capturing infrequent events.

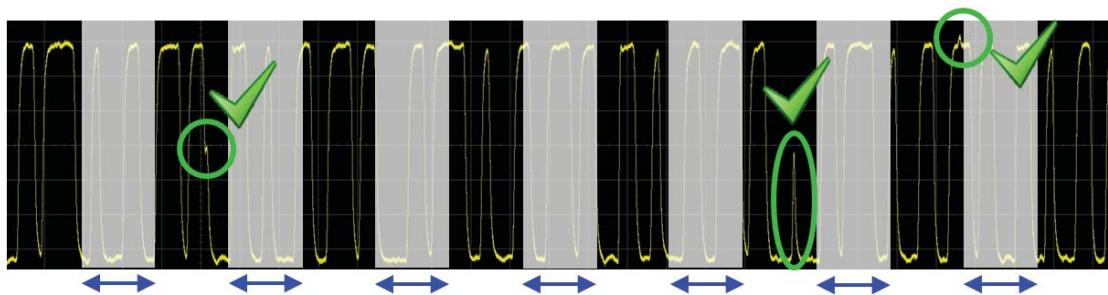


Figure 5: InfiniiVision 4000 X-Series with 1,000,000 waveforms/second. A short dead time increases your chances of capturing infrequent events.

Experience the Speed

Agilent achieves this industry-leading waveform update rate with MegaZoom IV smart memory technology

Traditionally, CPU processing was the major bottleneck for oscilloscope waveform update rate and responsiveness. Typically, the CPU handles interpolations, logic channel plotting, serial bus decoding, measurements and more, and the waveform update rate drops dramatically as these features are turned on.

The InfiniiVision 4000 X-Series requires minimum support from a CPU, as most core operations are handled by Agilent proprietary technology, the MegaZoom IV smart memory ASIC. MegaZoom includes hardware serial decoders and hardware mask/limit testing capability, plots analog and digital data directly to the display, supports GUI operation, and integrates additional instruments like the dual-channel WaveGen function/arbitrary waveform generator.

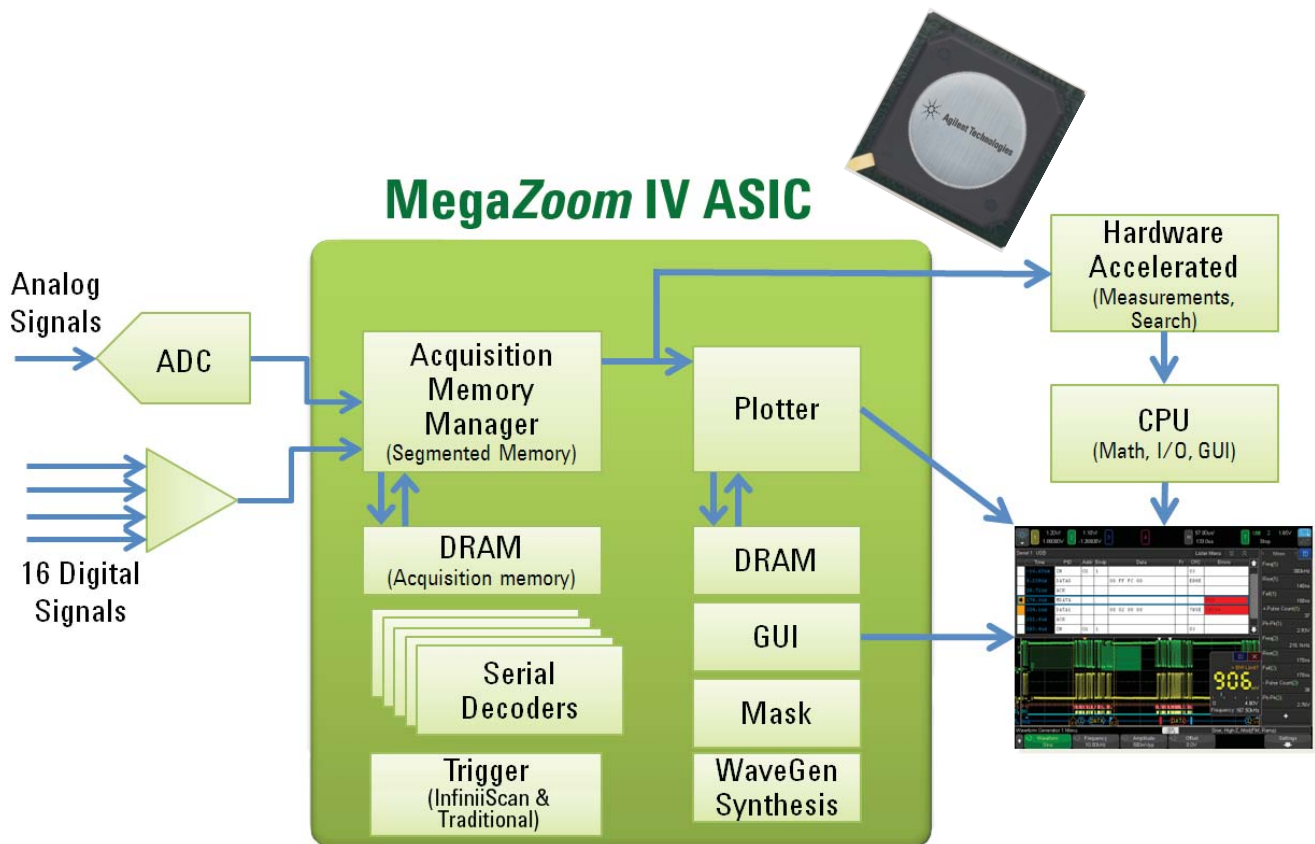


Figure 6. The 4000 X-Series oscilloscopes' uncompromised responsiveness, speed and waveform update rate is enabled by the MegaZoom IV, smart memory ASIC. The CPU is not used for core waveform operations.

Segmented memory: A smart and efficient way to capture waveforms

Acquisition memory size is an essential oscilloscope specification because it determines the amount of data you can capture in a single acquisition. In general, longer memory is better. However, no memory is always long enough to capture all the signals you need, especially when capturing infrequent anomalies, data bursts, or multiple serial bus packets. Segmented memory acquisition lets you selectively capture and store important signal activity without capturing unimportant signal idle time with the time stamp of each segment relative to the first trigger event. Segmented memory comes standard in the 4000 X-Series.

Figure 7 shows segmented memory successfully capturing 1,000 events in 3.27274 seconds. Traditional memory architecture would require 2.7 Gpts of memory to accomplish the same result. This memory is not available on any scope in the market.

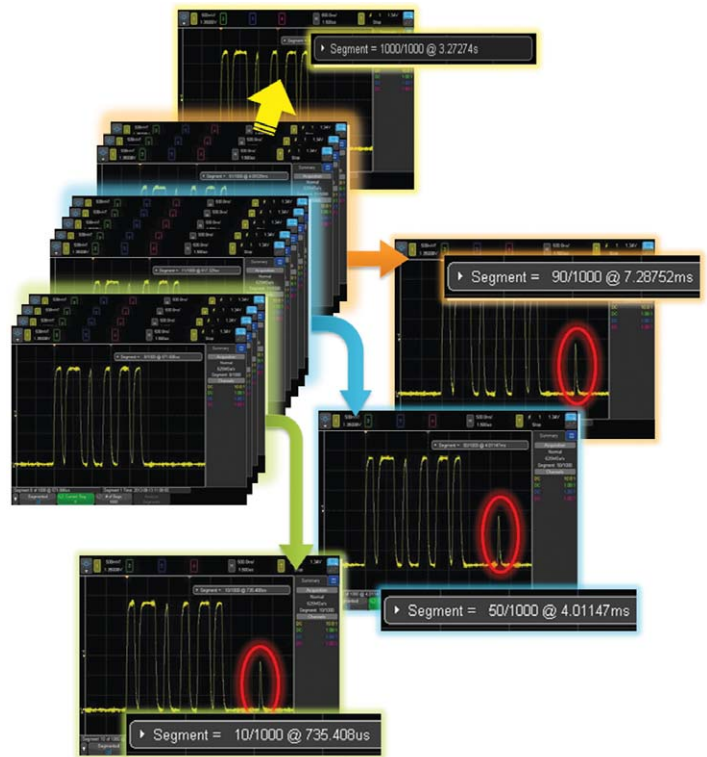


Figure 7: Segmented memory efficiently manages the memory to capture up to 1,000 segments of interest to you, making it an effective ultra-deep memory oscilloscope that can easily capture infrequent events and anomalies.

Segmented memory + serial decode

Segmented memory works in conjunction with serial protocol decode. For example, by setting the trigger condition to “CAN serial bus error,” segmented memory captures and stores only CAN error packets and stitches together each segment for easy viewing. You can quickly compare time tags to discover time intervals between errors.



Figure 8: Segmented memory being used in conjunction with serial decode resulting in maximum insight into serial bus.

Oscilloscope Experience Redefined:

Experience the Speed

Mask/limit testing (option)

Whether you are performing pass/fail tests to specified standards in manufacturing or testing for infrequent signal anomalies, mask/limit testing can be a valuable productivity tool (DSOX4MASK). The 4000 X-Series features powerful hardware-based mask testing and can perform up to 270,000 tests per second. You can select multiple test criteria, including the ability to run tests for a specific number of acquisitions, a specified time, or until detection of a failure.

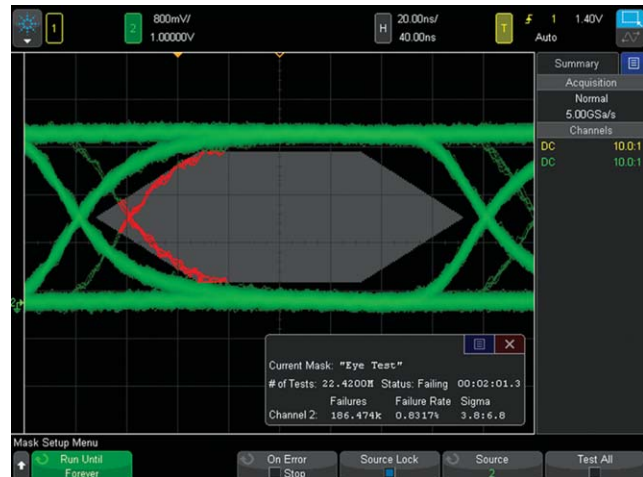


Figure 9 Mask testing evaluated > 22 M waveforms in just 2 minutes.

Search and navigation

The parametric and serial bus search and navigation feature comes standard on the 4000 X-Series oscilloscopes. When you are capturing long, complex waveforms using an oscilloscope's deep acquisition memory, manually scrolling through stored waveform data to find specific events of interest can be slow and cumbersome. With automatic search and navigation capability, you can easily set up specific search criteria and then quickly navigate to "found and marked" events. Available search criteria include edges, pulse width (time-qualified), rise/fall times (time-qualified), runt pulses (time- and level-qualified), and serial bus frames, packets, and errors.

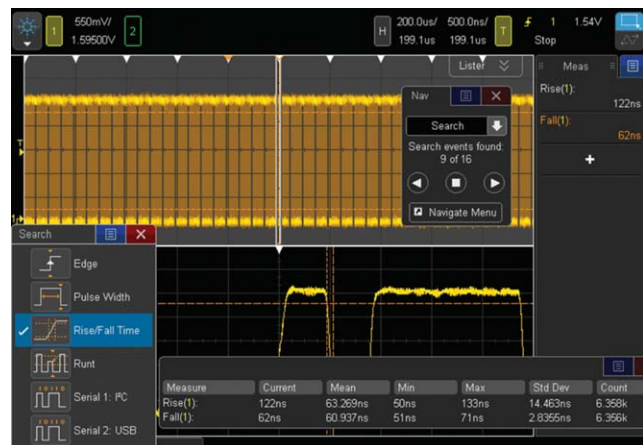


Figure 10: The 4000 X-Series was set up to capture data signals with various rise time edges. Using the search and navigation capability, the oscilloscope was able to find, mark (white triangles), and quickly navigate to 16 occurrences of "out of compliance" rise-time edges.

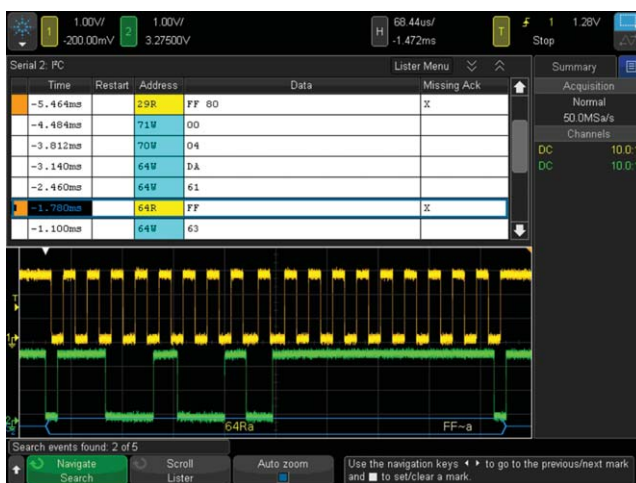


Figure 11: Using the error condition search, the 4000 X-Series quickly found 5 places with a missing acknowledgment in an I²C serial bus. The navigation feature moves between the errors and zooms automatically to show the error packet.

Oscilloscope Experience Redefined:

Experience the Usability

Industry's largest 12.1-inch display

From the start of product development, we designed every aspect of this oscilloscope for a touch interface. Large, easily touchable targets on the industry's largest 12.1-inch display with capacitive touch screen technology mean operation is quick and natural, just like your favorite tablet devices.

Capacitive touch screen technology

Capacitive touch screen technology provides enhanced productivity. Use the alphanumeric pad for quick annotation, place waveforms or cursors in exact positions and drag docking panels across the screen to see more measurement information.

The 4000 X-Series offers three ways to access key menus and features: touch GUI for those that prefer tablet or smart phone touch interfaces, front panel keypads for the traditional oscilloscope users, and Agilent Spark pull down menu for users who prefer Windows-like operations. The 4000 X-Series also offers a "touch off" button as well as USB mouse and keyboard support.

Redefine your remote Web control oscilloscope experience. The 4000 X-Series not only supports traditional control via a PC Web browser, but also supports remote control through popular tablet devices.



Figure 12. The industry's largest 12.1-inch display and capacitive touch screen technology with large, touchable targets.

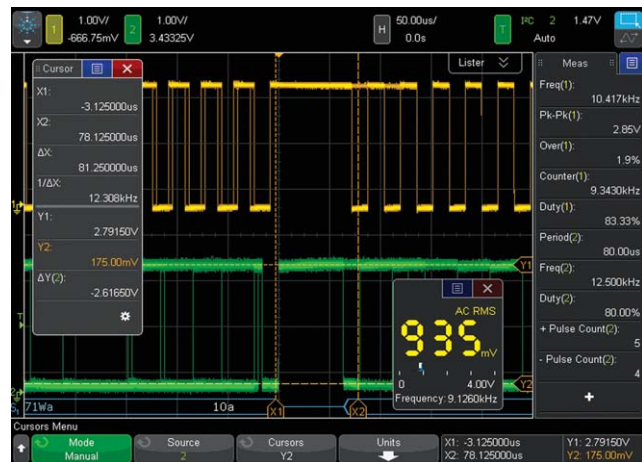


Figure 13: See 10 measurements, cursor information, and the DVM simultaneously by dragging the desired docking panel to any open area.

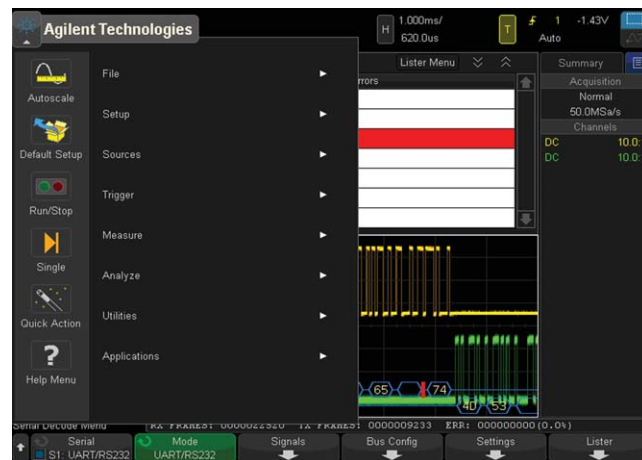


Figure 14: Use the Agilent Spark pull-down menu for Windows-like operation.

Oscilloscope Experience Redefined:

Experience the Usability

InfiniiScan Zone touch trigger

One of the biggest challenges of using an oscilloscope is setting up an advanced trigger to isolate a signal of interest. While advanced triggers are powerful features, InfiniiScan Zone touch trigger provides a turnkey trigger solution.

You simply observe the signal of interest on the display, and draw a zone (box) around it. What used to be hours of work can now take just a few seconds. If you want to move your zones to another location, just drag them over. The 4000 X-Series can be set up to easily trigger on one or two zone boxes simultaneously with either must intersect or must not intersect conditions.

InfiniiScan Zone triggering does not compromise the waveform update rate; the 4000 X-Series will still maintain an ultra-fast 200,000 waveforms per second or more, even with additional features turned on. In other words, the oscilloscope that sees everything can easily trigger on anything.



Figure 15. When you see anomalies, all you have to do is draw a zone box to trigger on them.



Figure 16. Isolating your signal of interest has never been this easy.

Experience the Integration

Investment protection through a fully-upgradable 5-in-1 instrument

The InfiniiVision 4000 X-Series redefines the oscilloscope experience with unprecedented integration. This 5-in-1 instrument provides:

- Oscilloscope
- 16 digital channels
- Serial protocol analyzer
- Dual-channel WaveGen 20 MHz function/arbitrary waveform generator
- 3-digit voltmeter



Figure 17: The 4000 X-Series provides the capabilities of five instruments seamlessly integrated into one.

Fully upgradable oscilloscope

Project needs change, and now your oscilloscope can too. With the 4000 X-Series, your investment is protected. If you need more bandwidth (up to the best-in-class 1.5 GHz), digital channels, dual-channel WaveGen, DVM or measurement applications in the future, you can easily add them at any time.

See pages 33 and 34 for more detailed information on available upgrades.

Add at the time of your purchase or upgrade later:

- Bandwidth up to best-in-class 1.5 GHz
- Digital channels (MSO)
- Dual-channel WaveGen 20-MHz function/arbitrary waveform generator
- 3-digit voltmeter
- Measurement applications
 - Serial protocol analysis
 - Power measurement analysis
 - HDTV video triggering and analysis
 - Mask testing
 - Educators' training kit

Experience the Integration

Mixed signal oscilloscope (MSO): Integrated 16 digital channels

With an additional 16 integrated digital channels, you now have up to 20 channels of time-correlated triggering, acquisition and viewing on the same instrument. This is especially important in today’s embedded designs with sophisticated digital control circuitry. Unlike other oscilloscopes in this class, you can buy a 2- or 4-channel DSO and enable the 16 digital channels already in the instrument at any time to make it an MSO. (DSOXPERFMSO)

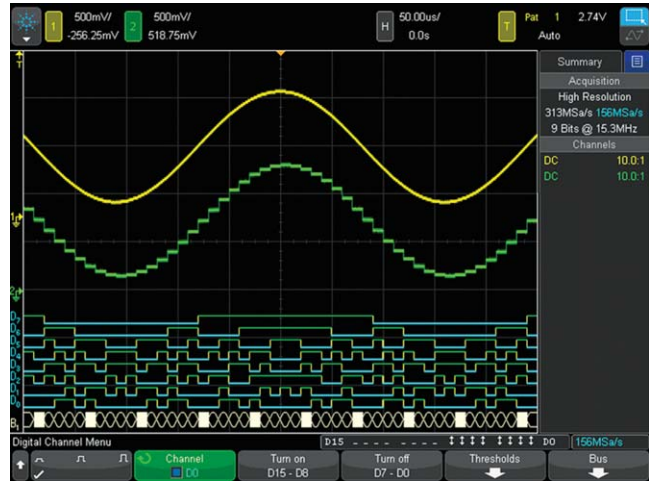


Figure 18: Digital channels are captured and displayed time-correlated with analog channels in MSOs or upgraded DSOs.

Serial protocol analysis: Hardware-based serial protocol decode and triggering

Agilent InfiniiVision Series, including the new 4000 X-Series, are the only oscilloscopes to use hardware-based serial protocol decoding. Other vendors’ oscilloscopes use software post-processing techniques to decode serial packets/frames, and therefore have slow waveform and decode capture rates and could miss critical events and errors due to a long dead-time. Faster decoding with hardware-based technology enhances the probability of capturing infrequent serial communication errors.

After capturing serial bus communication, you can easily perform a search operation based on specific criteria and then quickly navigate to bytes/frames of serial data that satisfy that search criteria. The 4000 X-Series can decode two serial buses simultaneously using hardware-based decoding, and display the captured data in a time interleaved “lister” display.



Figure 19: Dual serial bus CAN and LIN decode and interleaved “lister” display.

Serial protocol decoding can be used simultaneously with segmented memory and InfiniiScan Zone touch triggering.

The 4000 X-Series has 8 options supporting 10 different serial protocols including: I²C, SPI, USB 2.0, RS232/UART, CAN, LIN, FlexRay, MIL-STD 1553, ARINC 429, and I²S. (see page 22)



Figure 20: USB 2.0 trigger, decode and “lister” display.

Experience the Integration

Dual-channel WaveGen 20-MHz function/arbitrary waveform generator: Industry-exclusive

The 4000 X-Series offers the industry’s only dual-channel, integrated 20-MHz function/arbitrary waveform generator. (DSOX4WAVEGEN2) The integrated generator provides stimulus output of sine, square, ramp, pulse, DC, noise, sine cardinal (sinc), exponential rise, exponential fall, cardiac, Gaussian pulse and arbitrary waveforms (AWG) to your device under test. Signal modulation capability is also available.

With AWG functionality, you can store waveforms from analog channels or reference memory to the arbitrary memory and output from WaveGen. Easily create and edit the waveform using the built-in editor or Agilent’s free BenchLink Waveform Builder Basic software: www.agilent.com/find/33503.

With dual channels, you can generate differential signals to: output arbitrary clock and data signals to simulate serial buses, create complex modulations (more than the standard modulation feature), output IQ signals and more. The two channels can be tracked together as well (identical frequency, amplitude, offset and duty cycle).

3-digit voltmeter

The 4000 X-Series offers an integrated 3-digit voltmeter (DVM) and 5-digit frequency counter inside the oscilloscope (DSOXDVM). The voltmeter operates through the same probes as the oscilloscope channels. However, the DVM measurements are de-coupled from the oscilloscope triggering system so that both the DVM and triggered oscilloscope waveform capture can be made with the same connection. The voltmeter results are always displayed, keeping these quick characterization measurements at your fingertips.

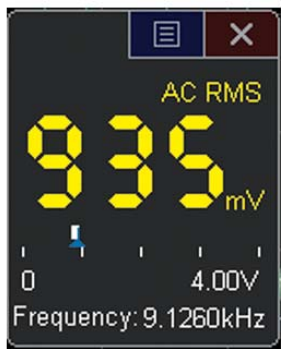


Figure 24: DVM 3-digit voltage and 5-digit frequency measurements always at your fingertips.



Figure 21: WaveGen sine wave output with and without added AM modulation.

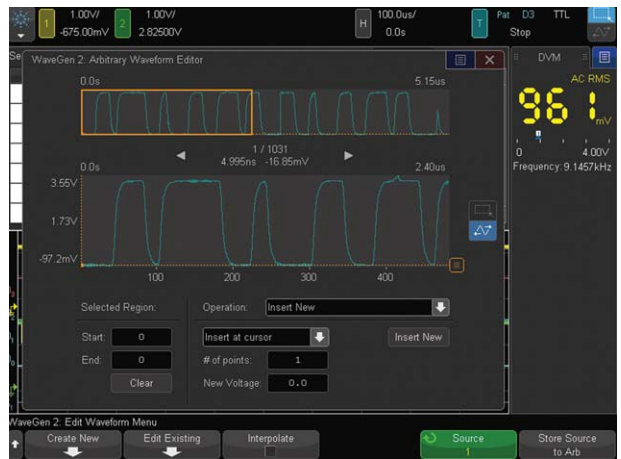


Figure 22: WaveGen arbitrary waveform editing screen.

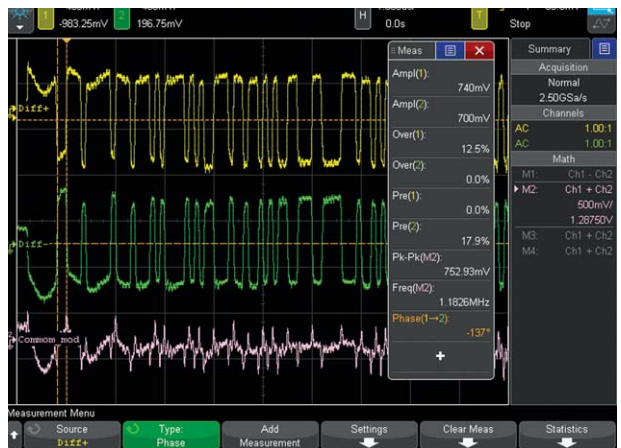


Figure 23: Dual channel WaveGen output of differential arbitrary signals. Common mode is shown as a math function.

Other Key Productivity Tools

Power measurements and analysis

When you are working with switching power supplies and power devices, the power measurements application (DSOX4PWR) provides a full suite of power measurements and analysis in the oscilloscope.

Included with the DSOX4PWR is a license for the U1881A PC-based power analysis software package, which provides additional offline measurements and report generation.

See www.agilent.com/find/DSOX4PWR for more information.



Figure 25: Power quality measurement, one of many in the power measurements application.

HDTV video triggering and analysis.

Whether you are debugging consumer electronics with HDTV or characterizing a design, the HDTV measurement application (DSOX4VID) provides support for a variety of HDTV standards for triggering and analysis.

See www.agilent.com/find/DSOX4VID for more information.



Figure 26: Triggering on 1080p HDTV signal analysis.

USB 2.0 signal quality analysis

With the USB 2.0 signal quality test option (DSOX4USBSQ), designers of systems with USB interfaces can now perform automated signal quality testing. This option supports low-speed, full-speed, and hi-speed applications (hi-speed tests require 1.5 GHz models). The USB 2.0 signal quality test with HTML pass/fail report generation includes eye-diagram mask testing, jitter analysis, EOP bit-width, signaling rate, edge monotonicity, and rise/fall times; all based on official USB-IF algorithms embedded in the oscilloscope.

See www.agilent.com/find/DSOX4USBSQ for more information.

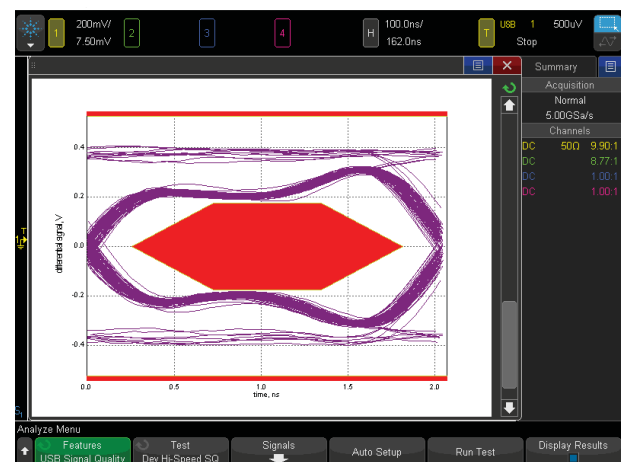


Figure 27: Perform automatic signal quality testing on USB 2.0 low-speed, full-speed, and hi-speed signals.

Oscilloscope Experience Redefined: Other Key Productivity Tools

The Xilinx FPGA dynamic probe

The Xilinx FPGA Dynamic Probe for the 4000 X-Series (DSOX4FPGAX) allows internal FPGA signal activity to be correlated to external signal activity. Running on an external PC, it allows the user to switch between up to 64 signals inside the FPGA for each debug pin on the outside of the FPGA in seconds, all while automatically mapping internal signal names to the oscilloscope channel labels. The DSOX4FPGAX supports the Virtex-6 series, Virtex-5 series, Virtex-4 series, Virtex-II Pro series, Virtex-II series, and Spartan-3 series devices.

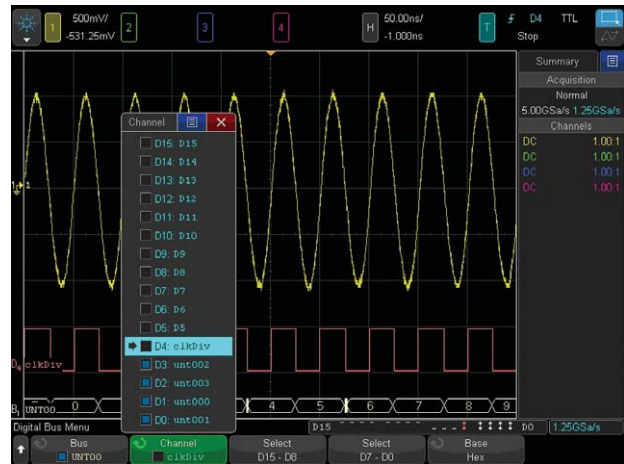


Figure 28. FPGA dynamic probe routing out internal FPGA signals, to be captured by the 4000 X-Series, correlated with this external analog sine wave in the design.

Educator's oscilloscope training kit

Teach your students what an oscilloscope is and how to perform basic measurements with the Educator's Oscilloscope Training Kit (DSOXEDK). This kit includes training tools created specifically for electrical engineering and physics undergraduate students and professors. It contains an array of built-in training signals, a comprehensive oscilloscope lab guide and tutorial written specifically for undergraduate students and an oscilloscope fundamentals PowerPoint® slide set for professors and lab assistants. Also available is an advanced triggering guide to help even the most experienced oscilloscope users to get the most out of their 4000 X-Series oscilloscope. See www.agilent.com/find/EDK for more information.



Figure 29: DSOXEDK gets both students and experienced users efficiently using the 4000 X-Series.

Other Key Productivity Tools

Advanced math analysis

Advanced math analysis provides a variety of additional math functions and comes standard on the 4000 X-Series. Additionally, math functions can be nested to provide additional insight into your designs. You can create up to four math functions, with one resultant math function displayed at a time.

Operators

- Add, subtract, multiply, divide

Transforms

- Differentiate, integrate
- FFT
- Ax + B
- Squared, square root
- Absolute value
- Common logarithm, natural logarithm
- Exponential, base 10 exponential

Filters

- Low-pass filter, high-pass filter
- Averaged value

Visualizations

- Magnify
- Measurement trend
- Chart logic bus timing, chart logic bus state

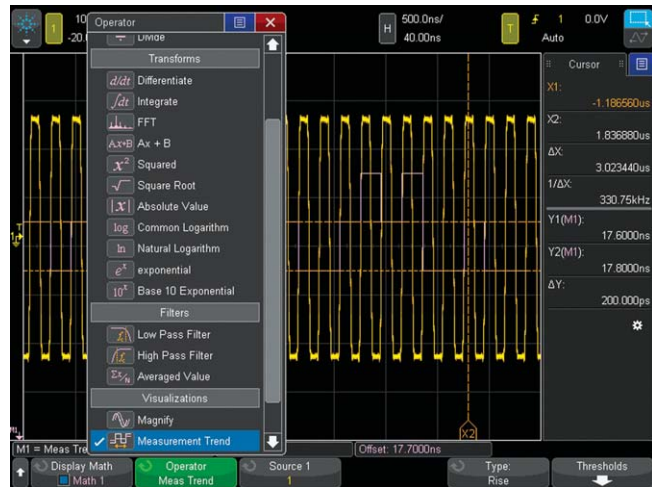


Figure 30: A variety of advanced math functions are standard in the 4000 X-Series.



Figure 31: Four math functions can be created and nested with one resultant math function.

35 automatic measurements

Automatic measurements are the essential tool of an oscilloscope. In order to make quick and efficient measurements, the 4000 X-Series provides 35 powerful automatic measurements and can display up to 10 at a time. Measurements can be gated by auto select, main window, zoom window, or cursors.

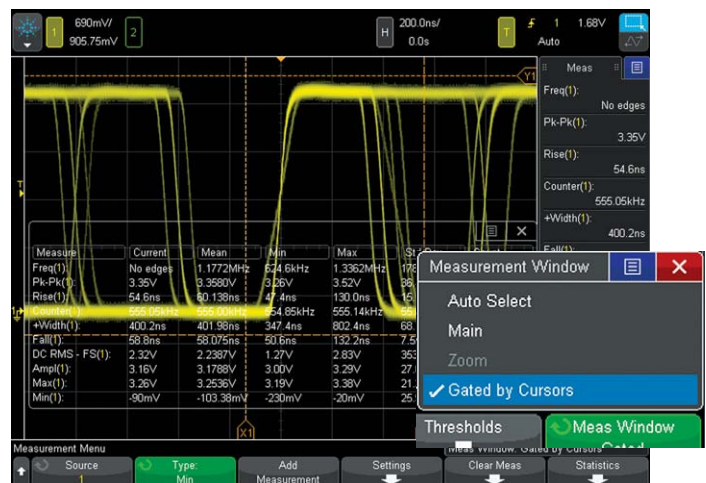


Figure 32: Up to 10 automated measurements displayed simultaneously. Measurements can be gated by cursors.

Reference waveforms

Store up to four waveforms in the scope's non-volatile reference waveform memory. Compare reference waveforms with live waveforms, and perform post analysis and measurements on stored data. You can also store waveforms on a removable USB memory device in *.h5 format and recall them back into oscilloscope's reference waveform memory later. Save and/or transfer waveforms to a PC as XY data pairs in a comma-separated values format (*.csv) or store bitmap images and transfer them to a PC for documentation purposes in a variety of image formats.



Figure 33: Store and recall up to four reference waveforms.

Powerful probe solutions and compatibility

Get the most out of your 4000 X-Series scope, by using Agilent's complete family of innovative probes and accessories for your application. The 4000 X-Series supports up to four active probes simultaneously with its full AutoProbe interface.*

All 4000 X-Series scopes come standard with a 700 MHz bandwidth, 10 MΩ input passive probe per each channel and gives you 700 MHz system bandwidth when used in conjunction with the 4000 X-Series 1 GHz/1.5 GHz models. Also available is the N2750A InfiniiMode differential probe and N2795A/96A single-ended active probe for high signal fidelity measurements without the high price. For ultra low current measurements, the N2820A Series high-sensitivity current probes are the best solution in the industry.

For the most up-to-date and complete information about Agilent's probes and accessories, visit our Web site at www.agilent.com/find/scope_probes or refer to the InfiniiVision Probes and Accessories data sheet with the Agilent literature number 5968-8153EN.

* Some restriction may apply. Contact Agilent for more details.



Figure 34: The N2750A InfiniiMode probe allows convenient measurement of differential, single-ended, and common mode signals with a single probe tip without reconnecting the probe to change the connection.

Localized front panel, GUI and help

Operate the oscilloscope in the language most familiar to you. The graphical user interface, built-in help system, front panel overlays, and user's manual are available in 11 languages. During operation, access the built-in help system just by pressing and holding any button.



Figure 35: Operate the oscilloscope in your choice of 11 languages.

Oscilloscope Experience Redefined:

Other Key Productivity Tools

Connectivity and LXI compatibility

Standard USB 2.0 hi-speed host (two on front, one on back) and device (one on back) ports make PC connectivity easy. Operate the scope from your PC and save/recall stored waveforms and setup files via standard LAN (LXI IPv6 Extended Function). Connect your projector or external monitor through VGA output, standard with the 4000 X-Series, when sharing and presenting screen information. An optional external GPIB-to-LAN adapter is also available (N4865A).

IntuiLink toolbars and data capture let you quickly move screen shots and data into Microsoft® Word® and Excel® software. You can download and install these toolbars from www.agilent.com/find/intuilink.

Virtual front panel

The 4000 X-Series' innovative capacitive touch screen matches perfectly with the latest tablet technologies. In addition to the traditional virtual front panel remote operation through your favorite PC Web browser, the 4000 X-Series supports remote oscilloscope control from your tablet devices (and smart phones with enough resolution). The tablet virtual front panel is identical to the 4000 X-Series' touch GUI so you can touch icons, draw InfiniiScan Zone Touch trigger zones and drag slide panels as if you are sitting in front of the actual oscilloscope.

Documentation and e-mail

Annotation becomes a simple task. Bring up the annotation menu and start editing it using the keypad, and then drag it to the desired location.



Figure 38(a): Annotation and keypad.



Figure 36: Standard VGA output, USB host and device and LAN.

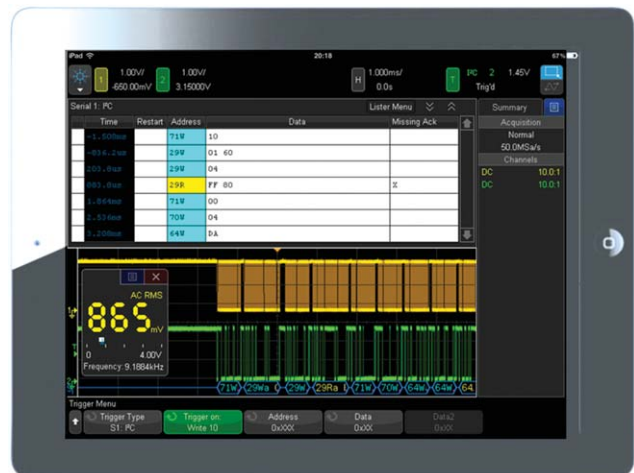


Figure 37: Tablet virtual front panel control.

Quick e-mail allows you to e-mail the data you want instantly to your inbox. Send out the screenshot, waveform data, or even a USB signal quality test report. This removes the hassle of connecting your PC to your oscilloscope.

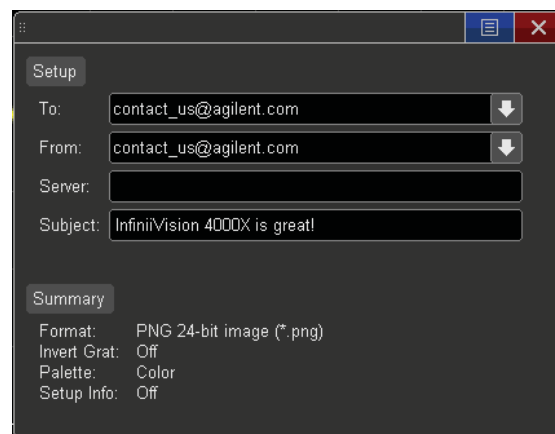


Figure 38(b): E-mail configuration screen.

Other Key Productivity Tools

InfiniiView oscilloscope analysis software

Agilent's InfiniiView PC-based oscilloscope analysis software (N8900A) allows you to do additional signal viewing, analysis and documentation tasks away from your oscilloscope.

Capture waveforms, save to a file, and recall the waveforms into InfiniiView. The application supports a variety of popular waveform formats from multiple oscilloscope vendors and includes the following features: navigate, view, measurements, analyze, view windows, documentation, and optional analysis upgrades.

For more information, go to:
www.agilent.com/find/InfiniiView.

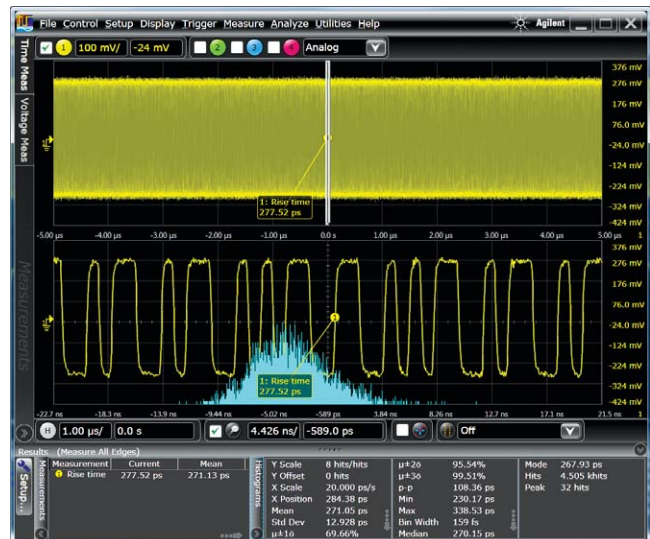


Figure 39: InfiniiView enables a variety of advanced signal analysis while providing extensive, yet intuitive, waveform documentation.

Agilent spectrum visualizer (ASV software)

ASV PC-based software package (64997A) connects to the oscilloscope via USB or Ethernet connection. ASV provides affordable advanced FFT frequency-domain analysis and spectrum and spectrogram analysis with an intuitive user interface familiar to RF engineers.

For more information go to:
www.agilent.com/find/ASV_InfiniiVision

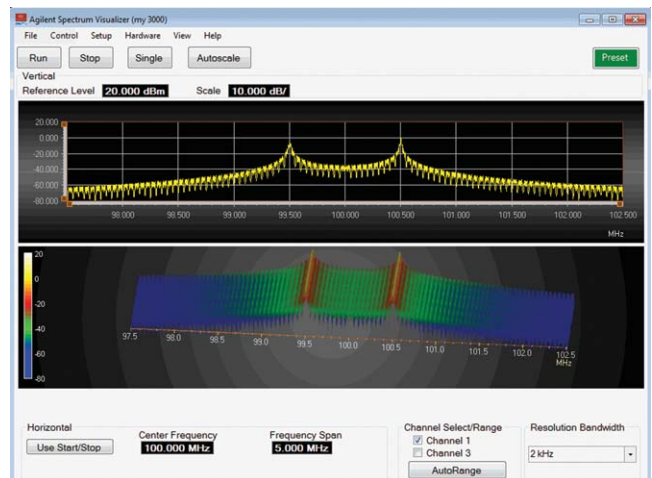


Figure 40: Waterfall view for ASV spectrogram measurements.

3-Year standard warranty, 2-Year calibration interval

Through improved quality processes and rigorous testing, the Agilent InfiniiVision 4000 X-Series oscilloscopes are able to perform at guaranteed specification for two years without calibration, thereby reducing your cost of ownership. These oscilloscopes come with a standard factory 3-year warranty.

Secure erase

The secure erase feature comes standard with all 4000 X-Series models. At the press of a button, internal non-volatile memory is clear of all setup, reference waveforms, and user preferences, ensuring the highest level of security in compliance with National Industrial Security Program Operation Manual (NISPOM) Chapter 8 requirements.

Other Key Productivity Tools

High-resolution mode for viewing signal details

To build more confidence in your designs, sometimes you need to look into more signal detail than you can see with the standard 8-bit vertical resolution of the 4000 X-Series.

High-resolution mode offers additional resolution and insight into the signal, without requiring a repetitive signal. Using real-time boxcar averaging, high-resolution mode reduces random noise and effectively increases vertical resolution, up to 12 bits. Some signal anomalies may be visible only in this extra resolution mode.

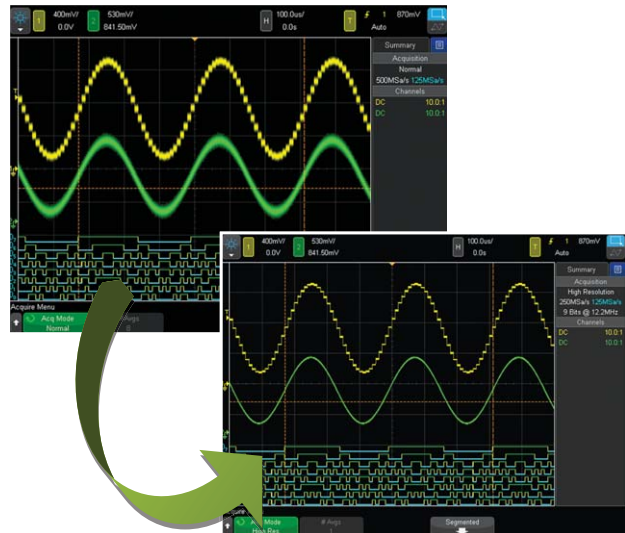


Figure 41: High-resolution mode increases vertical resolution up to 12 bits.

Advanced parametric triggering

With today’s more complex signals, you often need to trigger on complex signal conditions to synchronize the oscilloscope’s acquisition on specific events. The 4000 X-Series oscilloscope can trigger on the following conditions: edge, edge then edge, pulse width (time-qualified), pattern, or rise/fall time, Nth edge burst, runt, setup and hold, video, and various serial buses (optional).

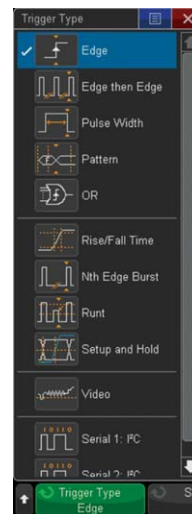


Figure 42: Wide array of advanced parametric trigger modes.

Freeze display

Perhaps you need to share with others an infrequent event you found. With the “freeze display” feature, you can keep intensity information on the screen while the oscilloscope is stopped or before saving a screen shot.



Figure 43: The “freeze screen” feature keeps the intensity-grading information while stopping the waveform acquisition.

Oscilloscope Experience Redefined

“Designed for touch.” Industry’s first and largest **12.1 inch capacitive touch screen** to redefine your oscilloscope experience. The way an oscilloscope was meant to be driven, with a designed-for-touch interface.

The new InfiniiScan Zone touch trigger, if you can see it, you can trigger on it by just drawing a box.

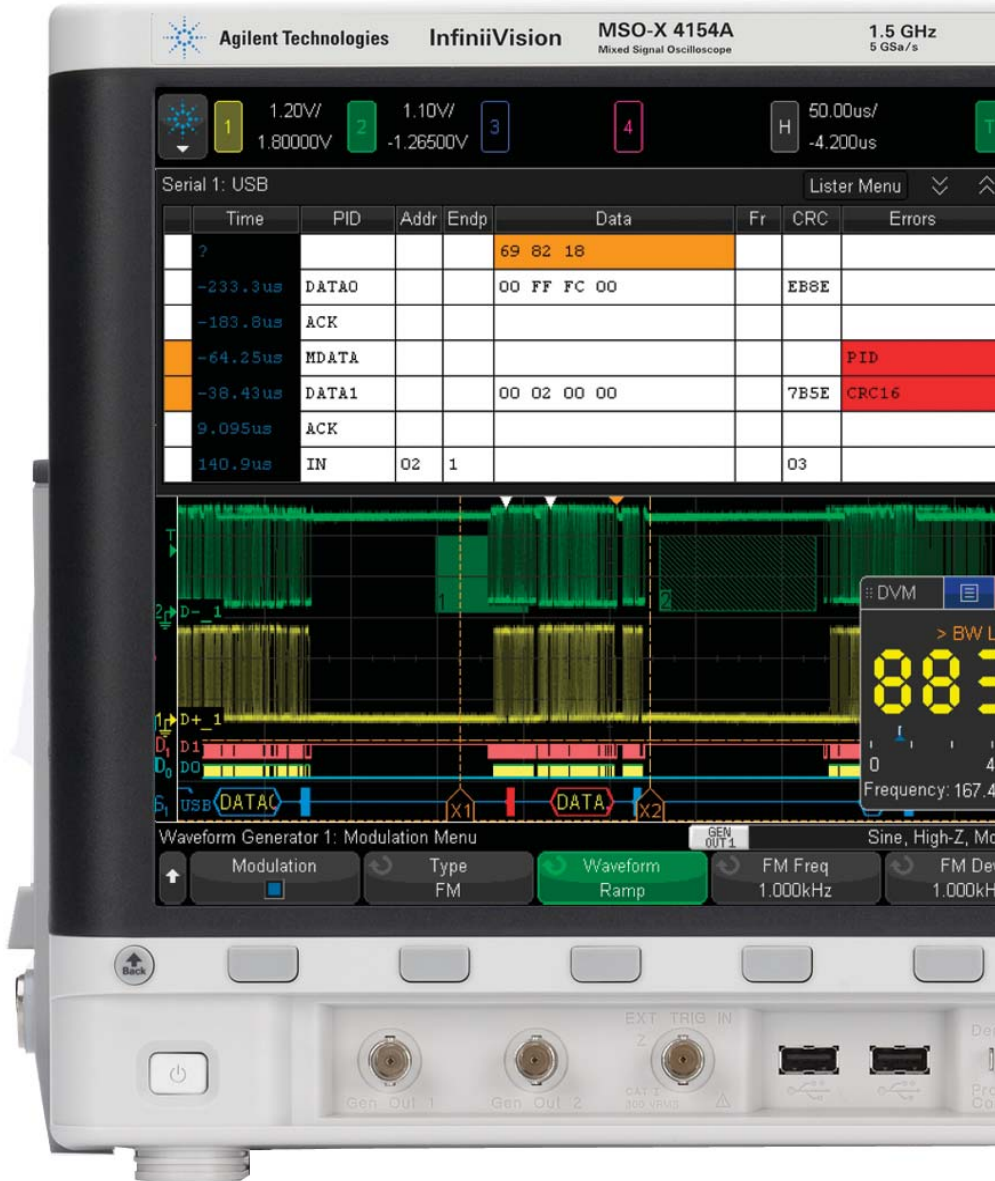
5-in-1 instruments redefines the integration experiences: oscilloscope channels, digital channels, serial protocol analysis, dual-channel WaveGen, and DVM.

All features are **fully upgradeable**, including bandwidth.

Industry-leading coverage of serial protocol including **USB 2.0 trigger and decode**.

Industry’s first **dual-channel WaveGen** function/arbitrary generator now allows you to generate differential, clock and data, two channel modulation, and IQ signals. Modulation of any signal is also included.

The class leading **1.5 GHz upgradeable bandwidth** expands your application coverage, including USB 2.0 hi-speed signal integrity testing.



Both **USB keyboard and mouse** are supported for additional ease of use.

Industry-leading *1 million waveform per second update rate* minimizes the dead-time for maximum probability of capturing infrequent events and anomalies.



Industry's *only integrated DVM*. Asynchronous from the 4 analog triggered waveforms.

Simultaneous 1GHz bandwidth across all 4 channels.

Docking panels with the capacitive touch screen add a new dimension of usability. See setup summary, automatic measurements, cursor info, DVM, and navigation pane in any combination, anywhere on the screen.

Standard advanced math and *four cascade-able math functions* enable even the most sophisticated signal analysis.

Display up to *10 measurements* simultaneously, without compromising other key info. 35 automatic measurements can be *gated by cursors*.

Not a touch screen fan? *Turn off the touch screen* from a front panel button if desired.

Independent knobs per channel for fast operation. All front panel knobs are push-able for access to common controls.

Standard segmented memory powered by *MegaZoom IV* smart memory technology provides intelligent capture of just the signal of interest.

Four AutoProbe (active or current probes) are supported simultaneously for demanding applications.

Configuring your InfiniiVision 4000 X-Series Oscilloscope

Step 1. Choose your bandwidth and number of channels

InfiniiVision 4000 X-Series scopes oscilloscopes									
		4022A	4024A	4032A	4034A	4052A	4054A	4104A	4154A
Bandwidth * (-3dB)		200 MHz		350 MHz		500 MHz		1 GHz	1.5 GHz
Calculated rise time (10-90%)		≤ 1.75 ns		≤ 1 ns		≤ 700 ps		≤ 450 ps	≤ 300 ps
Input channels	DSOX	2	4	2	4	2	4	4	4
	MSOX	2 + 16	4 + 16	2 + 16	4 + 16	2 + 16	4 + 16	4 + 16	4 + 16

* For example, if you chose 1 GHz, 4+16 channels, the model number will be MSOX4104A.

Step 2. Tailor your oscilloscope with integrated capabilities and measurement applications to save time and money

Description	Model Number
Serial protocols	
Embedded serial triggering and decode (I ² C, SPI)	DSOX4EMBD(-EMB)
Computer serial triggering and decode (RS232/UART)	DSOX4COMP(-CMP)
USB 2.0 Full/Low Speed serial triggering and decode	DSOX4USBFL(-USF)
USB 2.0 Hi-Speed serial triggering and decode	DSOX4USBH(-U2H)**
Automotive serial triggering and decode (CAN/LIN)	DSOX4AUTO(-AMS)
FlexRay serial triggering and decode	DSOX4FLEX(-FLX)
Audio serial triggering and decode (I ² S)	DSOX4AUDIO(-SND)
Aerospace and defence serial triggering and decode (MIL-STD 1553, ARINC 429)	DSOX4AERO(-AER)
Measurement applications	
Dual-channel WaveGen 20 MHz arbitrary/function generator	DSOX4WAVEGEN2(-WAV)
3-digit voltmeter (DVM)	DSOXDVM(-DVM)
Power analysis application	DSOX4PWR(-PWR)
Mask limit testing	DSOX4MASK(-MSK)
Enhanced video/TV application package	DSOX4VID(-VID)
FPGA dynamic probe option for Xilinx	DSOX4FPGAX(-FPX)
USB 2.0 signal quality test option	DSOX4USBSQ (-U2Q)***
Productivity tools	
Education training kit	DSOXEDK(-EDK)
InfiniiView oscilloscope analysis software	N8900A
Agilent spectrum visualizer (ASV)	64997A
Vector signal analyzer software (version 16 and higher)	89601B
BenchLink waveform builder pro and basic	33503A

** DSOX4USBH is only available for 1 GHz and 1.5 GHz models.

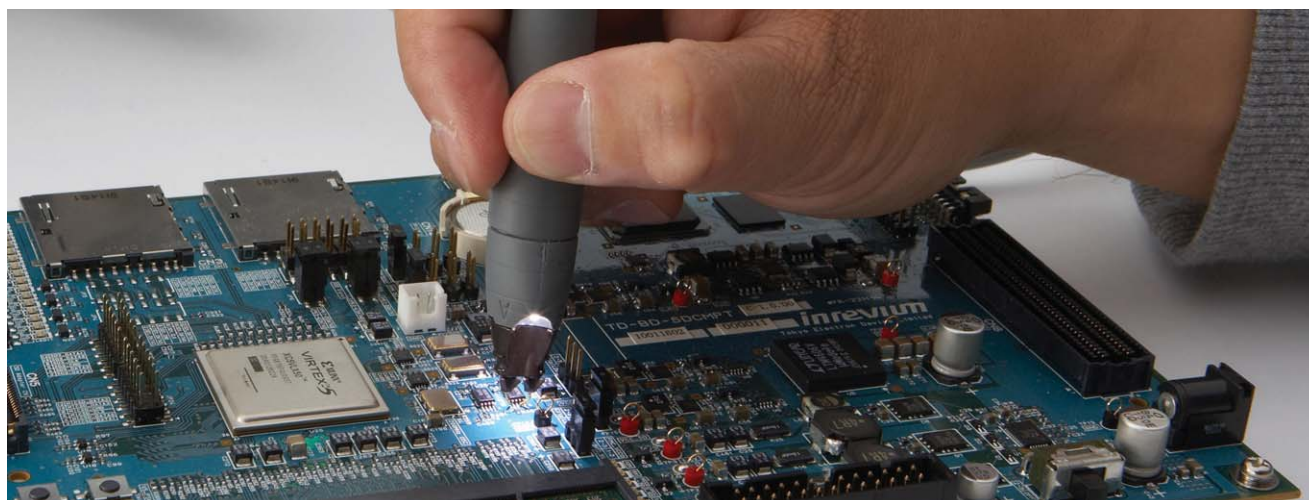
*** USB 2.0 hi-speed tests require 1.5 GHz models.

See page 33 for more detailed upgradability and installation process information.

Configuring your InfiniiVision 4000 X-Series Oscilloscope

Step 3. Choose your probes - For a complete list of compatible probes, visit www.agilent.com/find/scope_probes.

Probes	4000 X-Series
N2894A passive probe 700 MHz, 10:1, 10 M Ω	Included standard. 1 per channel.
N6450-60001 16 digital channel MSO cable	Included on MSOX models and DSOXPERFMSO
10076B high-voltage passive probe 250 MHz 4 kV	Optional
N2795A active single-ended probe 1-GHz 1-pF 1-M Ω with AutoProbe	Optional
N2796A active single-ended probe 2-GHz 1-pF 1-M Ω with AutoProbe	Optional
N2750A InfiniiMode differential probe 1.5-GHz 700-fF 200-k Ω with AutoProbe	Optional
N2790A differential active probe 100 MHz, ± 1.4 kV with AutoProbe	Optional
N2791A differential active probe 25 MHz, ± 700 V	Optional
N2792A differential active probe 200 MHz, ± 20 V	Optional
N2793A differential active probe 800 MHz, ± 15 V	Optional
1147B AC/DC current probe 50 MHz 15 A with AutoProbe	Optional
N2893A AC/DC current probe 100 MHz 15 A with AutoProbe	Optional
N2820A 2-channel high-sensitivity current probe 50 μ A - 5 A	Optional
N2821A 1-channel high-sensitivity current probe 50 μ A - 5 A	Optional



Step 4. Add the final touches.

Recommended accessories	4000 X-Series
GPIB-to-LAN external adapter	N4865A
Rack mount kit	N2763A
Soft carrying case	N2733A
Hard copy manual	N6455A
MET/CAL procedures	CallLab Solutions: www.callabsolutions.com/products/Agilent

InfiniiVision 4000 X-Series Performance Characteristics

DSO and MSO 4000 X-Series oscilloscopes

4000 X-Series specification overview									
	4022A	4024A	4032A	4034A	4052A	4054A	4104A	4154A	
Bandwidth * (-3dB)	200 MHz		350 MHz		500 MHz		1 GHz	1.5 GHz***	
4 channel real time bandwidth	200 MHz		350 MHz		500 MHz		1 GHz	1 GHz	
Calculated rise time (10-90%)	≤ 1.75 ns		≤ 1 ns		≤ 700 ps		≤ 450 ps	≤ 300 ps	
Input channels	DSOX	2	4	2	4	2	4	4	4
	MSOX	2 + 16	4 + 16	2 + 16	4 + 16	2 + 16	4 + 16	4 + 16	4 + 16
Maximum sample rate	5 GSa/s half channel, 2.5 GSa/s all channel								
Maximum memory depth	Standard 4 Mpts, standard segmented memory								
Display size and type	12.1-inch high-definition capacitive touch display								
Waveform update rate	> 1 million waveforms per second								
System bandwidth with N2894A standard passive probe	200 MHz	200 MHz	350 MHz	350 MHz	500 MHz	500 MHz	700 MHz	700 MHz	

Vertical system analog channels

Hardware bandwidth limits	Approximately 20 MHz (selectable)	
Input coupling	AC, DC	
Input impedance	Selectable: 1 MΩ ± 1% (16 pF), 50 Ω ± 1.5%	
Input sensitivity range	200 MHz ~ 500 MHz models: 1 mV/div to 5 V/div** (1 MΩ and 50 ohm)	
	1 GHz and 1.5 GHz models: 1 mV/div to 5 V/div** (1 MΩ), 1 mV/div to 1 V/div (50 ohm)	
Vertical resolution	8 bits	
Maximum input voltage	CAT I 300 Vrms, 400 Vpk; transient overvoltage 1.6 kVpk	
	CAT II 300 Vrms, 400 Vpk	
DC vertical gain accuracy*	± 2.0% full scale**	
DC vertical offset accuracy	± 0.1 div ± 2 mV ± 1% of offset setting	
Channel-to-channel isolation	200 MHz~1 GHz	≥ 40 dB from DC to maximum specified bandwidth of each model
	1.5 GHz	≥ 40 dB from DC to 1 GHz, ≥ 35 dB from 1 GHz to 1.5 GHz
Offset range	±5 V (< 10 mV/div), ±20 V (10 to 200 mV/div), ±75 V (> 200 mV/div)	

Vertical system digital channels

Digital input channels	16 digital (D0 to D15. Pod 1: D7 ~ D0, Pod 2: D15 ~ D8)
Thresholds	Threshold per pod
Threshold selections	TTL (+1.4 V), 5 V CMOS (+2.5 V), ECL (-1.3 V), user-defined (selectable by pod)
User-defined threshold range	± 8.0 V in 10 mV steps
Maximum input voltage	± 40 V peak CAT I; transient overvoltage 800 Vpk
Threshold accuracy*	± (100 mV + 3% of threshold setting)
Maximum input dynamic range	± 10 V about threshold
Minimum voltage swing	500 mVpp
Input impedance	100 kΩ ± 2% at probe tip
Input capacitance	~8 pF
Vertical resolution	1 bit

* Denotes warranted specifications, all others are typical. Specifications are valid after a 30-minute warm-up period and ± 10 °C from firmware calibration temperature.

** 1 mV/div and 2 mV/div is a magnification of 4 mV/div setting. For vertical accuracy calculations, use full scale of 32 mV for 1 mV/div and 2 mV/div sensitivity setting.

*** 1.5 GHz real time bandwidth in half-channel mode or full channel equivalent time mode.

InfiniiVision 4000 X-Series Performance Characteristics

Horizontal system analog channels		4022A	4024A	4032A	4034A	4052A	4054A	4104A	4154A
Time base range		2 ns/div to 50 s/div			1 ns/div to 50 s/div		500 ps/div to 50 s/div		
Time base accuracy*		±10 ppm							
Time base delay time range	Pre-trigger	Greater of 1 screen width or 200 µs (400 µs in interleaving mode)							
	Post-trigger	1 s to 500 s							
Channel-to-channel deskew range		± 100 ns							
Δ Time accuracy (using cursors)		± 0.001% of reading ± 0.16% screen width ± 30pS							
Modes		Main, zoom, roll, XY							
XY		On channels 1 and 2 only. Z Blanking on Ext Trigger Input, 1.4 V threshold Bandwidth: Maximum bandwidth. Phase error at 1 MHz: < 0.5 degree							

Horizontal system digital channels	
Minimum detectable pulse width	2 ns
Channel-to-channel skew	2 ns (typical); 3 ns (maximum)

Acquisition system		4022A	4024A	4032A	4034A	4052A	4054A	4104A	4154A
Maximum analog channels sample rate		5 GSa/s half channel interleaved, 2.5 GSa/s all channels							
Analog channels equivalent sample rate		N/A						128 Gsa/s	
Maximum analog channels record length		4 Mpts half channel interleaved, 2 Mpts all channel							
Maximum digital channels sample rate		1.25 GSa/s							
Maximum digital channels record length		2 Mpts (with digital channels only)							
Modes	Normal	Default mode							
	Peak detect	Capture glitches as narrow as 200 ps at all time base settings							
	Averaging	Selectable from 2, 4, 8, 16, 64, ... to 65,536							
	High resolution	Real-time boxcar averaging reduces random noise and effectively increases vertical resolution 12 bits: ≥ 50 µs/div 11 bits: ≥ 20 µs/div 10 bits: ≥ 10 us/div 9 bits: ≥ 5 us/div							
	Segmented	Segmented memory optimizes available memory for data streams that have long dead times between activity. Maximum segments = 1000. Re-arm time = 1 µs (minimum time between trigger events).							
	Roll	Displays the waveform moving across the screen from right to left. Available at the time base 50 ms/div or slower.							
Equivalent time		1 GHz and 1.5 GHz models only. 7.8 ps fine interpolator resolution yields a maximum effective sample rate of 128 GSa/s.							

* Denotes warranted specifications, all others are typical. Specifications are valid after a 30-minute warm-up period and ±10 °C from firmware calibration temperature.

InfiniiVision 4000 X-Series Performance Characteristics

Trigger system		
Trigger sources		Analog channel (1~4), digital channel (D0~D15), line, external, WaveGen (1, 2, or Mod) (FM/FSK)
Trigger modes	Normal	Requires trigger event for oscilloscope to trigger.
	Auto	Triggers automatically in absence of trigger event.
	Single	Front panel button that triggers only once on a trigger event. Press [Single] button again for oscilloscope to find another trigger event, or press [Run] front-panel button to trigger continuously in either auto or normal mode.
	Force	Front panel button that forces a trigger
Trigger coupling	DC	DC coupled trigger
	AC	AC coupled trigger, cutoff frequency: < 10 Hz (internal); < 50 Hz (external)
	HF reject	High-frequency reject, cutoff frequency ~ 50 kHz
	LF reject	Low-frequency reject, cutoff frequency ~ 50 kHz
	Noise reject	Adds hysteresis to the trigger circuitry. Selectable OFF or ON, decreases sensitivity 2x.
Trigger holdoff range		40 ns to 10.00 s
Trigger sensitivity (internal)*	200 MHz~1 GHz	< 10 mV/div: greater of 1 div or 5 mV; ≥ 10 mV/div: 0.6 div
	1.5 GHz	DC to 1 GHz: < 10 mV/div: greater of 1 div or 5 mV; ≥ 10 mV/div: 0.6 div 1 GHz to 1.5 GHz: < 10 mV/div: greater of 1.5 div or 5 mV; ≥ 10 mV/div: 1.0 div.
Trigger sensitivity (external)*	± 1.6 V	40 mVpp DC to 100 MHz, 70 mVpp 100 MHz to 200 MHz
	± 8 V	200 mVpp DC to 100 MHz, 350 mVpp 100 MHz to 200 MHz
Trigger level range	Any channel	± 6 div from center screen
	External	8 V range = ± 8 V, 1.6 V range = ± 1.6 V

* Denotes warranted specifications, all others are typical. Specifications are valid after a 30-minute warm-up period and ±10 °C from firmware calibration temperature.

InfiniiVision 4000 X-Series Performance Characteristics

Trigger type selections	
InfiniiScan Zone (HW zone qualifier)	Trigger on user-defined zones drawn on the display. Applies to one analog channel at a time. Specify zones as either "must intersect" or "must not intersect." Up to two zones. > 200,000 wfm/sec update rate. Supported modes: normal, peak detect, high resolution. Also works simultaneously with the serial decodes and mask/limit test.
Edge	Trigger on a rising, falling, alternating or either edge of any source.
Edge then edge (B trigger)	Arm on a selected edge, wait a specified time, then trigger on a specified count of another selected edge. Minimum 4 ns.
Pulse width	Trigger on a pulse on a selected channel, whose time duration is less than a value, greater than a value, or inside a time range <ul style="list-style-type: none"> • Minimum duration setting: 2 ns (500 MHz, 1 GHz, 1.5 GHz), 4 ns (350 MHz), 6 ns (200 MHz) • Maximum duration setting: 10 s • Range minimum: 10 ns
Pattern	Trigger when a specified pattern of high, low, and don't-care levels on any combination of analog, digital, or trigger channels is [entered exited]. Pattern must have stabilized for a minimum of 2 ns to qualify as a valid trigger condition. <ul style="list-style-type: none"> • Minimum duration setting: 2 ns (500 MHz, 1 GHz, 1.5 GHz), 4 ns (350 MHz), 6 ns (200 MHz) • Maximum duration setting: 10 s
Or	Trigger on any selected edges from available sources (analog and digital channels only). Bandwidth is 500 MHz.
Rise/fall time	Trigger on rise-time or fall-time edge speed violations (< or >) based on user-selectable threshold. Select from (< or >) and time settings range between <ul style="list-style-type: none"> • Minimum: 1 ns (500 MHz, 1 GHz, 1.5 GHz model), 2 ns (350 MHz model), 3 ns (200 MHz model) • Maximum: 10 s
Nth edge burst	Trigger on the Nth (1 to 65535) edge of a pulse burst. Specify idle time (10 ns to 10 s) for framing.
Runt	Trigger on a position runt pulse that fails to exceed a high-level threshold. Trigger on a negative runt pulse that fails to exceed a low-level threshold. Trigger on either polarity runt pulse based on two threshold settings. Runt triggering can also be time-qualified (< or >) with a minimum time setting of 2 ~ 6 ns and maximum time setting of 10 s <ul style="list-style-type: none"> • Minimum time setting: 2 ns (500 MHz, 1 GHz, 1.5 GHz), 4 ns (350 MHz), 6 ns (200 MHz)
Setup and hold	Trigger on setup/hold violations. Setup time can be set from -7 s to 10 s. Hold time can be set from 0 s to 10 ns. Minimum window (setup time + hold time) must be 3 ns or greater.
Video	Trigger on all lines or individual lines, odd/even or all fields from composite video, or broadcast standards (NTSC, PAL, SECAM, PAM-M).
Enhanced video (HDTV) (Option)	Trigger on lines and fields of enhanced and HDTV standards (480p/60, 567p/50, 720p/50, 720p/60, 1080p/24, 1080p/25, 1080p/30, 1080p/50, 1080p/60, 1080i/50, 1080i/60).
ARINC429 (Option)	Trigger and decode on ARINC429 data. Trigger on word start/stop, label, label + bits, label range, error conditions (parity, word, gap, word or gap, all), all bits (eye), all 0 bits, all 1 bits.
CAN (Option)	Trigger on CAN (controller area network) version 2.0A and 2.0B signals. Trigger on the start of frame (SOF) bit, remote frame ID (RTR), data frame ID (~RTR), remote or data frame ID, data frame ID and data, error frame, all errors, acknowledge error and overload frame
FlexRay (Option)	Trigger on frame ID or specific error condition, along with cycle-base and repetition-cycle filtering. Can also trigger on specific events such as BSS, TSS, FES, and wake up
I ² C (Option)	Trigger at a start/stop condition or user defined frame with address and/or data values. Also trigger on missing acknowledge, address with no acq, restart, EEPROM read, and 10-bit write.
I ² S (Option)	Trigger on 2's complement data of audio left channel or right channel (=, ≠, <, >, > <, < >, increasing value, or decreasing value)
LIN (Option)	Trigger on LIN (local interconnect network) sync break, sync frame ID, or frame ID and data

InfiniiVision 4000 X-Series Performance Characteristics

Trigger type selections	
MIL-STD1553 (Option)	Trigger on MIL-STD 1553 signals on data word start/stop, command/status start/stop, RTA, RTA + 11 bits, and error conditions (parity, sync, Manchester)
SPI (Option)	Trigger on SPI (serial peripheral interface) data pattern during a specific framing period. Supports positive and negative chip select framing as well as clock Idle framing and user-specified number of bits per frame. Supports MOSI and MISO data
UART/RS232/422/485 (Option)	Trigger on Rx or Tx start bit, stop bit, data content, or parity error
USB (Option)	Trigger on start of packet (SOP), end of packet (EOP), suspend ^{***} , resume ^{***} , reset ^{***} , packets (token, data, handshake, or special), and errors (PID, CRC5, CRC16, glitch, bit stuff ^{***} , SE1 ^{***}). Supports USB 2.0 low speed, full speed, and hi-speed (hi-speed is supported on 1 GHz and 1.5 GHz models only).

Waveform measurements									
DC vertical accuracy/cursors ^{**}	Single cursor accuracy: \pm [DC vertical gain accuracy + DC vertical offset accuracy + 0.21% full scale] Dual cursor accuracy: + [DC vertical gain accuracy + 0.42% full scale]*								
Number of measurements	35 measurements, maximum of 10 displayed at a time								
Automatic measurements	Measurements continuously updated with statistics. Cursors track last selected measurement. Select up to four measurements from the list below:								
	<table border="1"> <tbody> <tr> <td>Voltage</td> <td>Peak-to-peak, maximum, minimum, amplitude, top, base, overshoot, pre-shoot, average- N cycles, average- full screen, DC RMS- N cycles, DC RMS- full screen, AC RMS- N cycles, AC RMS- full screen (standard deviation), ratio (RMS1/RMS2).</td> </tr> <tr> <td>Time</td> <td>Period, frequency, counter, + width, - width, burst width, duty cycle, rise time, fall time, delay, phase, X at min Y, X at max Y</td> </tr> <tr> <td>Count</td> <td>Positive pulse count, negative pulse count, rising edge count, falling edge count</td> </tr> <tr> <td>Mixed</td> <td>Area- N cycles, area- full screen</td> </tr> </tbody> </table>	Voltage	Peak-to-peak, maximum, minimum, amplitude, top, base, overshoot, pre-shoot, average- N cycles, average- full screen, DC RMS- N cycles, DC RMS- full screen, AC RMS- N cycles, AC RMS- full screen (standard deviation), ratio (RMS1/RMS2).	Time	Period, frequency, counter, + width, - width, burst width, duty cycle, rise time, fall time, delay, phase, X at min Y, X at max Y	Count	Positive pulse count, negative pulse count, rising edge count, falling edge count	Mixed	Area- N cycles, area- full screen
Voltage	Peak-to-peak, maximum, minimum, amplitude, top, base, overshoot, pre-shoot, average- N cycles, average- full screen, DC RMS- N cycles, DC RMS- full screen, AC RMS- N cycles, AC RMS- full screen (standard deviation), ratio (RMS1/RMS2).								
Time	Period, frequency, counter, + width, - width, burst width, duty cycle, rise time, fall time, delay, phase, X at min Y, X at max Y								
Count	Positive pulse count, negative pulse count, rising edge count, falling edge count								
Mixed	Area- N cycles, area- full screen								
Counter	Built-in frequency counter								
	<table border="1"> <tbody> <tr> <td>Source</td> <td>Any analog or digital channel</td> </tr> <tr> <td>Resolution</td> <td>5 digits. Up to 8 digits with an external reference 10 MHz input.</td> </tr> <tr> <td>Max frequency</td> <td>Bandwidth of oscilloscope</td> </tr> </tbody> </table>	Source	Any analog or digital channel	Resolution	5 digits. Up to 8 digits with an external reference 10 MHz input.	Max frequency	Bandwidth of oscilloscope		
Source	Any analog or digital channel								
Resolution	5 digits. Up to 8 digits with an external reference 10 MHz input.								
Max frequency	Bandwidth of oscilloscope								
Mask limit test option	Standard mask/limit test capability that provides easy, fast pass/fail comparison of a signal under test to a predefined mask template or auto-mask template. Predefined mask templates or edits to an auto-mask template can be made via a simple text editor. > 270,000 mask tests per second (waveform update rate)								

Waveform math	
Number of math functions	Four (display one at a time)
Arithmetic	Add, subtract, multiply, FFT, differentiate, integrate, square root, divide, Ax + B, square, absolute, common log, natural log, exponential, base 10 exponential, LP filter, HP filter, averaged value, magnify, measurement trend, chart logic bus (timing or state)
FFT	Up to 64 kpts resolution. FFT window types: hanning, flat top, rectangular, Blackman-Harris

* Denotes warranted specifications, all others are typical. Specifications are valid after a 30-minute warm-up period and ± 10 °C from firmware calibration temperature.

** 1 mV/div and 2 mV/div is a magnification of 4 mV/div setting. For vertical accuracy calculations, use full scale of 32 mV for 1 mV/div and 2 mV/div sensitivity setting

*** Suspend, resume, reset, bit stuff error, and SE1 error are USB 2.0 low and full speed only.

InfiniiVision 4000 X-Series Performance Characteristics

Display characteristics

Display	12.1-inch high-definition capacitive touch display
Resolution	800 (H) x 600 (V) pixel format (screen area)
Graticules	8 vertical divisions by 10 horizontal divisions with intensity controls.
Format	YT, XY and Roll
Maximum waveform update rate	> 1,000,000 wfm/s
Persistence	Off, infinite, variable persistence (100 ms - 60 s)
Intensity gradation	64 intensity levels

Connectivity

USB 2.0 hi-speed host port	USB 2.0 hi-speed host ports x3, two front and one rear panel. Supports memory devices and printers.
USB 2.0 hi-speed device port	One USB 2.0 hi-speed device port on rear panel. USB Test & Measurement Class (USBTMC) compatible.
LAN port	10/100Base-T port on rear panel. LXI IPv6 extended function
Web remote control	VNC Web interface (via major Web browsers)
Video out port	SVGA out on rear panel. Connect oscilloscope display to an external monitor or projector.
GPIB port	N4865A GPIB-to-LAN adapter (optional)
10 MHz out/in	BNC connector on the rear panel. Supported modes: Off, 10 MHz out, or reference signal mode (10 MHz in).
Trigger out	BNC connector on the rear panel. Supported modes: triggers, mask, waveform generator 1 sync pulse, and waveform generator 2 sync pulse.

Dual-channel WaveGen built-in function/arbitrary waveform generator

WaveGen outputs	Two (front-panel BNC connectors) Both waveform generator outputs can be frequency tracked, amplitude tracked, or completely tracked.* A generator's output can be inverted to create a differential signal
Waveforms	Sine, square, ramp, pulse, DC, noise, sine cardinal (sinc), exponential rise, exponential fall, cardiac, Gaussian pulse, and arbitrary
Modulation	Modulation is available on channel 1 only. Modulation is not available when tracking mode is enabled. Modulation Types: AM, FM, FSK Carrier Waveforms: Sine, Ramp, Sine Cardinal, Exponential Rise, Exponential Fall, and Cardiac. Modulation Source: Internal (no external modulation capability) AM: Modulation: Sine, Square, Ramp Modulation Frequency: 1Hz to 20 kHz Depth: 0% to 100% FM: Modulation: Sine, Square, Ramp Modulation Frequency: 1Hz to 20 kHz Minimum Carrier Frequency: 10Hz Deviation: 1 Hz to Carrier Frequency or $(2e^{12} / \text{Carrier Frequency})$, whichever is smaller FSK: Modulation: 50% duty cycle square wave FSK Rate: 1Hz to 20 kHz Hop Frequency: 2 x FSK Rate to 10 MHz

* Only the following combination of wave shapes can be frequency tracked or completely tracked: 1) sine, ramp, sine cardinal, cardiac, and Gaussian pulse. 2) square wave and pulse. 3) exponential rise and exponential fall. 4) arbitrary.

Dual-channel WaveGen built-in function/arbitrary waveform generator		
Sine	Frequency range:	0.1 Hz to 10 MHz
	Amplitude flatness:	±0.5 dB (relative to 1 kHz)
	Harmonic distortion:	-40 dBc
	Spurious (non harmonics):	-40 dBc
	Total harmonic distortion:	1%
	SNR (50-ohm load, 500-MHz BW):	40 dB ($V_{pp} \geq 0.1$ V); 30 dB ($V_{pp} < 0.1$ V)
Square wave /pulse	Frequency range:	0.1 Hz to 20 MHz
	Duty cycle:	20 to 80%
	Duty cycle resolution:	Larger of 1% or 10 ns
	Rise/fall time:	19 ns (10 to 90%)
	Overshoot:	<2%
	Asymmetry (at 50% DC):	±1% ± 5ns
	Jitter (TIE RMS):	500 ps
Ramp/triangle wave	Frequency range:	0.1 Hz to 200 kHz
	Linearity:	1%
	Variable symmetry:	0 to 100%
	Symmetry resolution:	1%
Pulse	Frequency range:	0.1 Hz to 10 MHz
	Pulse width	20 ns minimum
	Pulse with resolution:	10 ns
	Edge time:	Fixed at 19 ns (not variable)
	Overshoot:	<2%
Noise	Bandwidth:	20 MHz typical
Sine cardinal (Sinc)	Frequency range:	0.1 Hz to 1.0 MHz
Exponential rise/fall	Frequency range:	0.1 Hz to 5.0 MHz
Cardiac	Frequency range:	0.1 Hz to 200.0 kHz
Gaussian pulse	Frequency range:	0.1 Hz to 5.0 MHz
Arbitrary	Waveform length:	1 to 8,192 points
	Amplitude resolution:	10 bits (including sign bit)**
	Repetition rate:	0.1 Hz to 12 MHz
	Sample rate:	100 MSa/s
	Filter bandwidth:	20 MHz
Frequency	Sine wave and ramp accuracy:	130 ppm (frequency < 10 kHz)
		50 ppm (frequency > 10 kHz)
	Square wave and pulse accuracy:	[50 + frequency/200] ppm (frequency < 25 kHz) 50 ppm (frequency ≥ 25 kHz)
	Resolution:	0.1 Hz or 4 digits, whichever is larger
Amplitude	Range: minimum	20 mVpp if offset ≤ 0.5 Vpp into Hi-Z*
		10 mVpp if offset ≤ 0.5 Vpp into 50Ω*
	Range: maximum	10 Vpp except, 9 Vpp if Sinc or Cardiac, 7.5 Vpp if Gaussian pulse into Hi-Z; 5 Vpp/4.5 Vpp into 50 Ω
	Resolution:	100 μV or 3 digits, whichever is higher
	Accuracy:	1.5% (frequency = 1 kHz)

* Sinc, cardiac and Gaussian pulse: ±1.25 V into Hi-Z; ± 625 mV into 50 Ω

** Full resolution is not available at output due to internal attenuator stepping

Dual channel WaveGen - built-in function/arbitrary waveform generator		
DC offset	Range	± 5 V into Hi-Z, except ± 4 V if sine wave, ± 2.5 V if sinc, cardiac, or Gaussian pulse into Hi-Z
		± 2.5 V into Hi-Z, except ± 2 V if sine wave, ± 1.25 V if sinc, cardiac, or Gaussian pulse into 50Ω
	Resolution:	Larger of 250 μ V or 3 digits
	Accuracy (waveform modes): Accuracy (DC mode):	$\pm 1.5\%$ of offset setting $\pm 1\%$ of amplitude ± 1 mV $\pm 1.5\%$ of offset setting ± 3 mV
Main output	Impedance :	50Ω typical
	Isolation:	Not available, main output BNC is grounded
	Protection:	Overload automatically disables output
Trigger output	Trigger output available on trig-out BNC	

Digital voltmeter	
Source	Analog channels only (1-4)
Functions	ACrms, DC, DCrms, frequency
Resolution	ACV/DCV: 3 digits
	Counter frequency: 5.5 digits
Measuring rate	100 times/second
Autoranging	Automatic adjustment of vertical amplification to maximize the dynamic range of measurements
Range meter	Graphical display of most recent measurement, plus extrema over the previous 3 seconds

General and environmental characteristics		
Power line consumption	Maximum 120 watts	
Temperature	Operating:	0 to +55 °C
	Nonoperating:	-30 to +70 °C
Humidity	Operating:	50% to 95% RH at 40 °C for 5 days
	Nonoperating:	90% RH at 65 °C for 24 hr
Altitude	Operating:	up to 3,000 m (15,000 ft)
	Nonoperating:	up to 15,300 m (50,000 ft)
Electromagnetic compatibility	Meets EMC Directive (2004/108/EC), meets or exceeds IEC 61326-1:2005/EN 61326-1:2006 Group 1 Class A requirement CISPR 11/EN 55011 IEC 61000-4-2/EN 61000-4-2 IEC 61000-4-3/EN 61000-4-3 IEC 61000-4-4/EN 61000-4-4 IEC 61000-4-5/EN 61000-4-5 IEC 61000-4-6/EN 61000-4-6 IEC 61000-4-11/EN 61000-4-11 Canada: ICES-001:2004 Australia/New Zealand: AS/NZS	

InfiniiVision 4000 X-Series Performance Characteristics

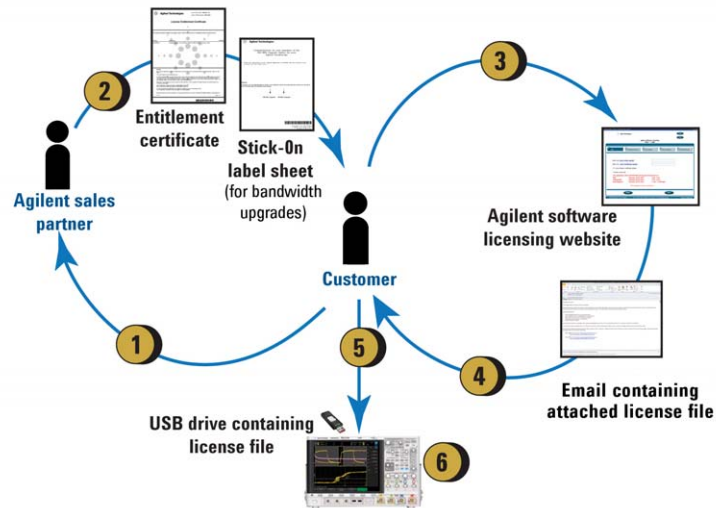
General and environmental characteristics	
Safety	UL61010-1 2nd edition, CAN/CSA22.2 No. 61010-1-04
Vibration	Meets IEC60068-2-6 and MIL-PRF-28800; class 3 random
Shock	Meets IEC 60068-2-27 and MIL-PRF-28800; class 3 random; (operating 30 g, ½ sine. 11 ms duration, 3 shocks/axis along major axis, total of 18 shocks)
Dimensions	454 mm W x 275 mm H x 156 mm D
Weight	Net: 6.3 kg (13.9 lbs), shipping: 11.4 kg (25 lbs)
Kensington style lock	Rear-panel security slot connects to standard Kensington-style lock

Nonvolatile storage	
Reference waveform display	2 internal waveforms or USB thumb drive
Save formats	Setup (*.scp), 8 or 24-bit bitmap image (*.bmp), PNG 24-bit image (*.png), CSV data (*.csv), ASCII XY data (*.csv), binary data (*.bin), lister data (*.csv), reference waveform data (*.h5), mask (*.mask), arbitrary waveform data (*.csv), power harmonics data (*.csv)
Max USB flash drive size	Supports industry-standard flash drives
Set ups without USB flash drive	10 internal setups
Set ups with USB flash drive	Limited by size of USB drive

Included standard with oscilloscope	
Factory warranty	3-year warranty
Calibration	Certificate of Calibration, 2-year calibration interval
Probes	One per channel N2894A 700 MHz passive probe (10:1 attenuation) N6450-60001 16-digital-channel MSO cable (1 per oscilloscope included on all MSO models and DSOXPERFMSO)
Localized interface	English, Chinese (simplified and traditional), French, German, Italian, Japanese, Korean, Portuguese, Russian, and Spanish localized front panel overlays, interface, and built-in help system
Power cord	Localized power cord
Front panel protection	Front panel cover
Documentation	CD containing localized user's guide, service guide, and programmer's manual

Related literature		
Publication title	Publication type	Publication number
<i>Triggering on Infrequent Anomalies and Complex Signals Using InfiniiScan Zone Trigger</i>	Application note	5991-1107EN
<i>Characterizing Hi-Speed USB 2.0 Designs in Embedded Designs</i>	Application note	5991-1148EN
<i>Oscilloscope Memory Architectures- Why All Acquisition Memory is not Created Equal</i>	Application note	5991-1024EN
<i>Switch Mode Power Supply Measurements</i>	Application note	5991-1117EN

License-only Bandwidth Upgrades and Measurement Applications



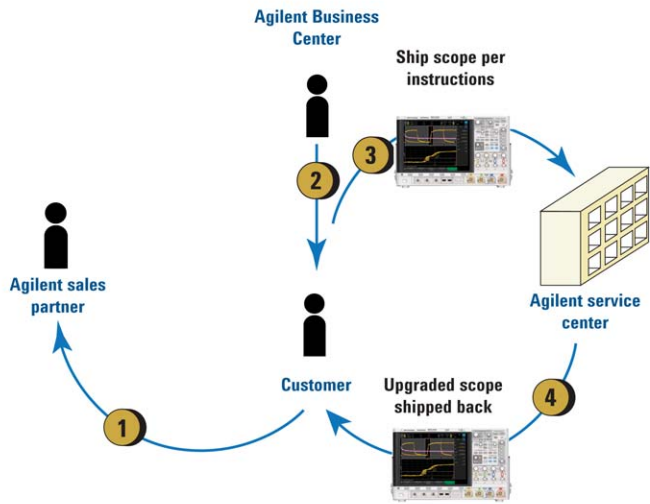
4000 X-Series bandwidth upgrade models		
Model Number	Description	Type
DSOX4B2T32U	200 MHz ~ 350 MHz , 2 ch	Service Center
DSOX4B2T34U	200 MHz ~ 350 MHz , 4 ch	Service Center
DSOX4B3T52U	350 MHz ~ 500 MHz , 2 ch	License Only
DSOX4B3T54U	350 MHz ~ 500 MHz , 4 ch	License Only
DSOX4B5T104U	500 MHz ~ 1 GHz , 4 ch	Service Center
DSOX4B1T154U	1 GHz ~ 1.5 GHz , 4 ch	Service Center
DSOX4B2T52U	200 MHz ~ 500 MHz , 2 ch	Service Center
DSOX4B2T54U	200 MHz ~ 500 MHz , 4 ch	Service Center
DSOX4B2T104U	200 MHz ~ 1 GHz , 4 ch	Service Center
DSOX4B2T154U	200 MHz ~ 1.5 GHz , 4 ch	Service Center
DSOX4B3T104U	350 MHz ~ 1 GHz , 4 ch	Service Center
DSOX4B3T154U	350 MHz ~ 1.5 GHz , 4 ch	Service Center
DSOX4B5T154U	500 MHz ~ 1.5 GHz , 4 ch	Service Center

Model Number	Description
DSOX4EMBD	Embedded serial triggering and analysis (I ² C, SPI)
DSOX4COMP	Computer serial triggering and analysis (RS232/UART)
DSOX4USBFL	USB 2.0 Full/Low Speed serial decode and triggering
DSOX4USBH *	USB 2.0 Hi-Speed serial decode and triggering
DSOX4USBSQ	USB 2.0 signal quality test
DSOX4AUTO	Automotive serial triggering and analysis (CAN/LIN)
DSOX4FLEX	FlexRay serial triggering and analysis
DSOX4AUDIO	Audio serial triggering and analysis (I ² S)
DSOX4AERO	Aerospace and defence serial triggering and decode (MIL-STD 1553 and ARINC 429)
DSOX4WAVEGEN2	Dual-channel WaveGen 20 MHz arbitrary/function generator
DSOXDVM	3-digit voltmeter (DVM)
DSOX4PWR	Power analysis application
DSOX4MASK	Mask Limit Testing
DSOX4VID	Enhanced video/TV application package
DSOX4FPGAX	FPGA dynamic probe option for Xilinx
DSOXEDK	Education and training kit

* DSOX4USBH is available only for 1 GHz and 1.5 GHz models.

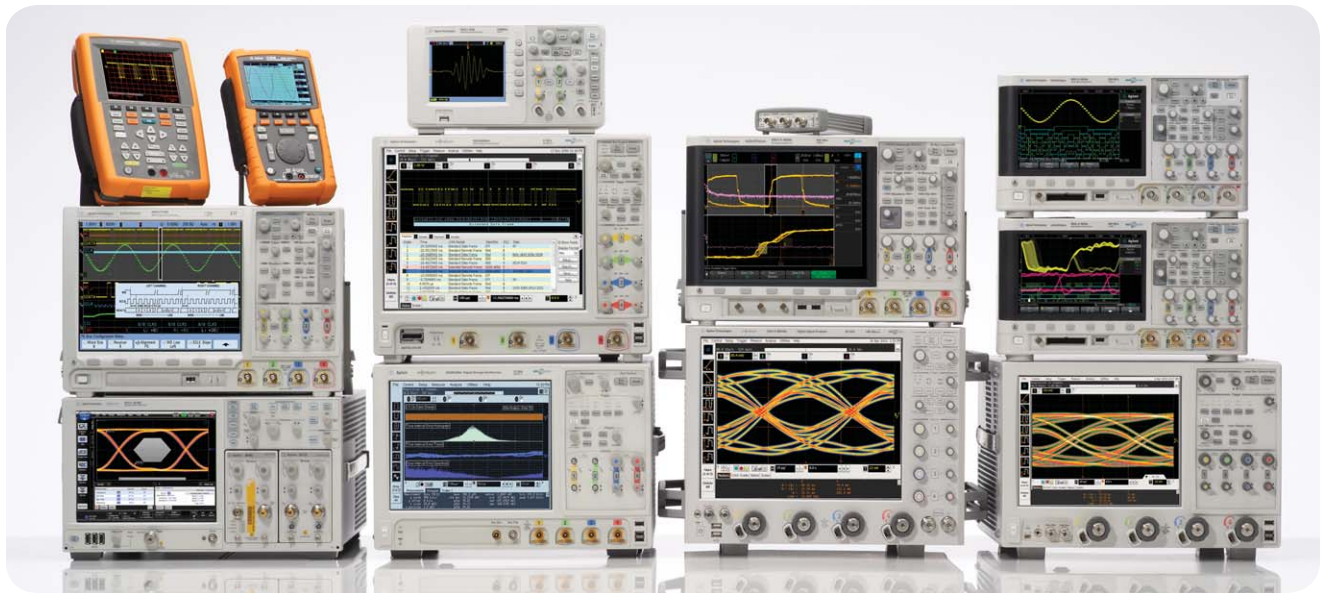
Process description	
1	Place order for a license-only upgrade or measurement application product with an Agilent sales partner.
2	For measurement applications, you will receive a paper or electronic .pdf entitlement certificate. For bandwidth upgrades only, you will receive a stick-on label document indicating upgraded bandwidth specification in addition to a paper entitlement certificate.
3	Use entitlement certificate containing instructions and certificate number needed to generate a license file for a particular 4000 X-Series oscilloscope model number and serial number unit.
4	Receive the licensed file and installation instructions via email.
5	Copy license file (.lic extension) from email to a USB drive and follow instructions in email to install the purchased bandwidth upgrade or measurement application on the oscilloscope.
6	For bandwidth upgrades only, attach bandwidth upgraded stick-on labels to front and rear panels of the oscilloscope. Model number and serial number of the oscilloscope do not change.

Return-to-Agilent Service Center Bandwidth Upgrades



4000 X-Series bandwidth upgrade models		
Model Number	Description	Type
DSOX4B2T32U	200 MHz ~ 350 MHz , 2 ch	Service center
DSOX4B2T34U	200 MHz ~ 350 MHz , 4 ch	Service center
DSOX4B3T52U	350 MHz ~ 500 MHz , 2 ch	License only
DSOX4B3T54U	350 MHz ~ 500 MHz , 4 ch	License only
DSOX4B5T104U	500 MHz ~ 1 GHz , 4 ch	Service center
DSOX4B1T154U	1 GHz ~ 1.5 GHz , 4 ch	Service center
DSOX4B2T52U	200 MHz ~ 500 MHz , 2 ch	Service center
DSOX4B2T54U	200 MHz ~ 500 MHz , 4 ch	Service center
DSOX4B2T104U	200 MHz ~ 1 GHz , 4 ch	Service center
DSOX4B2T154U	200 MHz ~ 1.5 GHz , 4 ch	Service center
DSOX4B3T104U	350 MHz ~ 1 GHz , 4 ch	Service center
DSOX4B3T154U	350 MHz ~ 1.5 GHz , 4 ch	Service center
DSOX4B5T154U	500 MHz ~ 1.5 GHz , 4 ch	Service center

Process description	
1	Place order for a return-to-Agilent service center bandwidth upgrade product to an Agilent sales partner. Service center installation cost is in addition to bandwidth upgrade product price. Service center calibration is included in the bandwidth upgrade product price.
2	Agilent Business Center will contact you regarding process and timing of the service center installation. Continue to use oscilloscope until contacted again later when parts are available at service center.
3	Ship the oscilloscope per provided instructions (freight paid by Agilent) to service center.
4	Service center ships back upgraded oscilloscope with stick-on labels applied to front and rear panels indicating upgraded bandwidth specification. Model number and serial number of the oscilloscope do not change.



Agilent Technologies Oscilloscopes

Multiple form factors from 20 MHz to > 90 GHz | Industry-leading specs | Powerful applications



myAgilent

www.agilent.com/find/myagilent

A personalized view into the information most relevant to you.



www.axiestandard.org

AdvancedTCA® Extensions for Instrumentation and Test (AXIe) is an open standard that extends the AdvancedTCA for general purpose and semiconductor test. Agilent is a founding member of the AXIe consortium.



www.lxistandard.org

LAN eXtensions for Instruments puts the power of Ethernet and the Web inside your test systems. Agilent is a founding member of the LXI consortium.



www.pxisa.org

PCI eXtensions for Instrumentation (PXI) modular instrumentation delivers a rugged, PC-based high-performance measurement and automation system.

Agilent Channel Partners

www.agilent.com/find/channelpartners

Get the best of both worlds: Agilent's measurement expertise and product breadth, combined with channel partner convenience.



Three-Year Warranty

www.agilent.com/find/ThreeYearWarranty

Agilent's combination of product reliability and three-year warranty coverage is another way we help you achieve your business goals: increased confidence in uptime, reduced cost of ownership and greater convenience.



Agilent Advantage Services

www.agilent.com/find/AdvantageServices

Accurate measurements throughout the life of your instruments.



www.agilent.com/quality

www.agilent.com

www.agilent.com/find/4000X-Series

For more information on Agilent Technologies' products, applications or services, please contact your local Agilent office. The complete list is available at: www.agilent.com/find/contactus

Americas

Canada	(877) 894 4414
Brazil	(11) 4197 3600
Mexico	01800 5064 800
United States	(800) 829 4444

Asia Pacific

Australia	1 800 629 485
China	800 810 0189
Hong Kong	800 938 693
India	1 800 112 929
Japan	0120 (421) 345
Korea	080 769 0800
Malaysia	1 800 888 848
Singapore	1 800 375 8100
Taiwan	0800 047 866
Other AP Countries	(65) 375 8100

Europe & Middle East

Belgium	32 (0) 2 404 93 40
Denmark	45 45 80 12 15
Finland	358 (0) 10 855 2100
France	0825 010 700* *0.125 €/minute
Germany	49 (0) 7031 464 6333
Ireland	1890 924 204
Israel	972-3-9288-504/544
Italy	39 02 92 60 8484
Netherlands	31 (0) 20 547 2111
Spain	34 (91) 631 3300
Sweden	0200-88 22 55
United Kingdom	44 (0) 118 927 6201

For other unlisted countries:

www.agilent.com/find/contactus

(BP2-19-13)

Product specifications and descriptions in this document subject to change without notice.

© Agilent Technologies, Inc. 2012, 2013
Published in USA, March 24, 2013
5991-1103EN



Agilent Technologies