

**S2401U S2405U** 50Ms/S, 1MHz Handheld DSO/DMM  
50Ms/S, 5MHz Handheld DSO/DMM

**S2505** 50Ms/S, 5MHz Handheld DSO/DMM  
with Data Logger

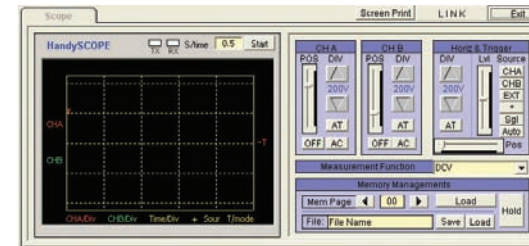
S2505

**S2401U S2405U**

- Dual Channel
- 50Ms/S sampling rate
- 50mV/Div Vertical sensitivity
- Auto ranging Vertical and Horizontal scales
- Built-in auto/manual ranging, True RMS, 5000 count DMM
- Designed to UL3111, CSA C22.2 No 1010 standards
- Handheld and battery operated
- USB port and supplied software
- User-friendly front panel
- Li-ion Battery pack for long term usage between charging



S2401U  
S2405U  
S2505



Software Display

**S2505**

- Dual channel, DC to 5MHz bandwidth Oscilloscope
- Data logging to 17,000 points
- 50 Ms/S sampling rate Single channel and 25 Ms/S Dual channel
- Built in Auto ranging 10,000 count True RMS DMM with Min/Max/AVG, Go-No go and Trend plot
- Auto ranging Vertical and Horizontal scales
- 10MHz Frequency counter
- Li-ion Battery pack for long periods of use between charges
- User friendly front panel
- USB interface with software and cable

**SPECIFICATIONS**

**S2401U S2405U**

**Oscilloscope Section**

- Vertical  
Bandwidth: 5MHz S2405U / 1MHz S2401U  
Resolution: 8 bits  
Number of Channels: 2  
Coupling: AC and DC  
Input Impedance: 1MΩ  
Accuracy: ±3%  
Max. Input Volts: 600V DC or RMS  
Vertical Sensitivity: 50mV to 500V/Div S2405U and 500mV to 500V/Div S2401U in a 1-2-5 sequence
- Horizontal  
Real Time Sampling Rate: 50Ms/S Single channel  
25Ms/S Dual channel  
Record Length: 512 bytes single shot and glitch capture  
256 bytes all other modes  
Samples/Div: 25 samples  
Update Rate: Real time  
Modes: Single shot, Roll mode, Normal  
Accuracy: ±0.01%  
Sweep Rate: 1μS to 5 Second in a 1-2-5 sequence
- Memory: 16 waveforms and 16 setups may be saved in memory
- Triggering  
Trigger Source: Ch A, Ch B and External  
Coupling: AC, DC  
Trigger Sensitivity: 2/20 Division  
Trigger Modes: Auto and Normal  
Slope: Positive and Negative

**Digital Multimeter Section**

- DC Volts  
Ranges: 5V, 50V, 500V, 1000V  
Best Resolution: 1mV  
Accuracy: ±(0.3% + 3d)  
Input Impedance: 1MΩ
- AC Volts  
Ranges: 3V, 30V, 300V, 750V  
Best Resolution: 1mV

Accuracy: ±(0.75% + 5d) 40Hz to 450Hz,  
±(2% + 5d) 450Hz to 5KHz  
±(2.5% + 5d) 5KHz to 20KHz  
Input Impedance: 1MΩ

- Ohms  
Ranges: 5KΩ 50KΩ, 500KΩ, 5MΩ  
Best Resolution: 1Ω  
Accuracy: ±(0.5% + 5d)  
Overload Voltage: 600V DC or AC peak
- Continuity  
Test Voltage: 1.7V  
Threshold: 100 digit
- Frequency  
Ranges: 100Hz, 1kHz, 10kHz, 100kHz, 1MHz, 10MHz  
Best Resolution: 0.01Hz  
Accuracy: ±(0.05% + 5d)  
Overload Voltage: 600V DC or AC peak
- RPM  
Ranges: 240 to 60,000RPM  
Resolution: 1RPM  
Accuracy: ±(0.05% + 5d)
- Pulse Width  
Range: 2μS to 500mS (pulse width > 2μS)
- %Duty Cycle: 25% to 75%
- General Specifications  
Power: 3.7V Li-ion Battery pack  
120V to 5V @ 1Amp DC adapter  
Display: 132 x 128 pixel super twist LCD  
Size: 7.5"(H) x 3.5"(W) 1.57"(D)  
Weight: 1.5 lbs  
Standard Accessories: Operating manual, Carrying case, Test leads, Holster, USB cable and Software, AC/DC charger and 3.7V Li-ion Battery pack

**S2505**

**Oscilloscope Section**

- Vertical  
Bandwidth: 5MHz  
Resolution: 8 bits  
Number of Channels: 2  
Coupling: AC and DC  
Input Impedance: 1MΩ  
Accuracy: ±3%  
Max. Input Volts: 600V DC or AC RMS  
Vertical Sensitivity: 50mV to 500V/Div in a 1-2-5 sequence
- Horizontal  
Sample Rate: 50Ms/S Single channel  
25Ms/S Dual channel  
Record Length: 512 bytes single shot and glitch capture  
256 bytes all other modes  
Samples/Div: 25 samples  
Update Rate: Real time  
Modes: Single shot, Roll mode, Normal  
Accuracy: ±0.01%  
Sweep Rate: 1.0μS to 5 Seconds in a 1-2-5 sequence  
Memory: 16 waveforms and 16 setups may be saved in memory
- Triggering  
Trigger Source: Ch A, Ch B and External  
Coupling: AC, DC  
Trigger sensitivity: 2 to 20 Divisions  
Slope: Positive or Negative

**Digital Multimeter Section**

- Data Logger  
Data Logger Memory: 17,000 points  
Sample Rate: 0.25s/S  
Sampling Modes: Peak, Time  
Time: Real Time Clock
- DC Volts  
Ranges: 1000mV, 10V, 100V, 1000V  
Best Resolution: 0.1mV  
Accuracy: ±(0.3% + 3d)  
Input Impedance: 1MΩ

- AC Volts (True RMS)  
Ranges: 500mV, 5V, 50V, 500V, 750V  
Best Resolution: 0.1mV  
Accuracy: ±(0.75% + 5d) 40Hz to 450Hz,  
±(2% + 5d) 450Hz to 5KHz  
±(2.5% + 5d) 5KHz to 20KHz  
Input Impedance: 1MΩ
- Ohms  
Ranges: 5KΩ, 50KΩ, 500KΩ, 5MΩ  
Best Resolution: 100mΩ  
Accuracy: ±(0.5% + 5d)  
Overload Voltage: 600V DC or AC RMS
- Continuity:  
Test Voltage: 1.7V  
Buzzer will sound at < 100Ω, resistance  
Overload Voltage: 600V DC or AC RMS
- Frequency  
Ranges: 100Hz, 1KHz, 10KHz, 100KHz, 1MHz, 10MHz  
Best Resolution: 0.01Hz  
Accuracy: ±(0.05% + 5d)
- RPM  
Ranges: 240 to 9,999RPM  
Resolution: 1RPM  
Accuracy: ±(0.05% + 5d)
- Pulse Width  
Range: 2μS to 500mS (pulse width > 2μS)
- %Duty cycle: 25% to 75%
- General Specifications  
Power: 3.7V 1400mAH Li-ion Battery pack  
Dimensions: 3.5"(W) x 7.5"(H) x 1.25"(D)  
Weight: 1.5 lbs  
LCD: 132 x 128 pixel super twist LCD  
Standard Accessories:  
Test leads, Operating manual, Holster, USB cable and Software, AC/DC Charger and a 3.7V 1400mAH Li-ion Battery pack (installed)

# Mouser Electronics

Authorized Distributor

Click to View Pricing, Inventory, Delivery & Lifecycle Information:

[Protek:](#)

[S2505](#)