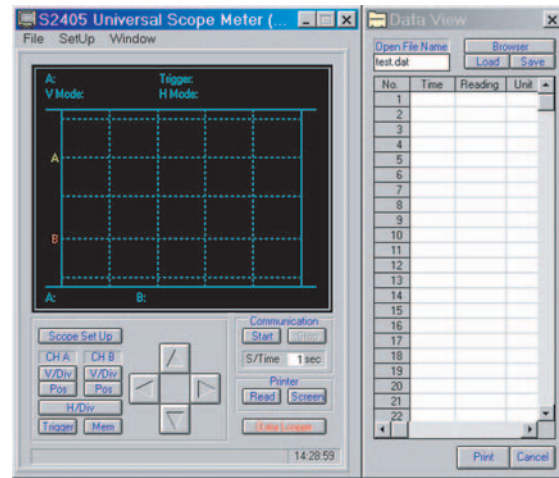


**S2405**

- Dual Channel
- 50MS/s sampling rate
- 50mV/Div Vertical sensitivity
- Auto ranging Vertical and Horizontal scales
- Built-in auto/manual ranging, True RMS, 4000 count DMM
- DC to 5MHz bandwidths
- Hand held and battery operated
- Designed to UL3111, CSA C22.2 No 1010 standards
- RS-232 Port and supplied software
- User-friendly front panel



## ■ SPECIFICATIONS

### Vertical (Oscilloscope)

Bandwidth: 5MHz  
 Resolution: 8 bits  
 Number of Channels: 2  
 Coupling: AC and DC  
 Input Impedance: 1M $\Omega$   
 Accuracy:  $\pm 3\%$   
 Max. Input Volts: 600V DC or AC RMS  
 Vertical Sensitivity: 50mV/Div to 500V/Div in a 1-2-5 sequences

### Horizontal (Oscilloscope)

Sample Rate:  
 50MS/s single channel  
 25MS/s dual channel  
 Record Length:  
 512 bytes single shot and Glitch capture  
 256 bytes all other modes  
 Samples/Div: 25 samples  
 Update Rate: Real time  
 Modes: Single shot, roll mode, normal  
 Accuracy:  $\pm 0.01\%$   
 Sweep Rate: 1 $\mu$ s/Div to 5s/Div in a 1-2-5 sequences  
 Memory: 16 waveforms and setups may be saved in memory

### Triggering (Oscilloscope)

Trigger source: CH A, CH B, External  
 Coupling: AC, DC  
 Trigger sensitivity: 2/20 Division  
 Trigger Modes: Auto and Normal  
 Slope: Positive and Negative

### DC Volts

(Digital Multimeter)  
 Ranges: 5V, 50V, 500V, 1000V  
 Best Resolution: 1mV  
 Accuracy:  $\pm(0.3\% + 3d)$   
 Input Impedance: 1M $\Omega$

### AC Volts

Ranges: 3V, 30V, 300V, 750V  
 Best Resolution: 1mV  
 Accuracy:  
 $\pm(0.75\% + 5d)$  40Hz to 450Hz  
 $\pm(2\% + 5d)$  450Hz to 5KHz  
 $\pm(2.5\% + 5d)$  5KHz to 20KHz  
 Input Impedance: 1M $\Omega$   
 Max. Input Volts: 600V DC or AC RMS

### Ohms

Ranges: 5K $\Omega$ , 50K $\Omega$ , 500K $\Omega$ , 5M $\Omega$   
 Best Resolution: 1 $\Omega$   
 Accuracy:  $\pm(0.5\% + 5d)$   
 Overload Voltage: 600V DC or AC peak

### Continuity

Test Voltage: 1.7V  
 Threshold: 100 digits  
 Overload Voltage: 600V DC or AC peak

### Frequency

Ranges: 100Hz, 1KHz, 10KHz, 100KHz, 1MHz, 10MHz  
 Best Resolution: 0.01Hz  
 Accuracy:  $\pm(0.05\% + 5d)$   
 Overload Voltage: 600V DC or AC peak

### RPM

Range: 240 to 60,000 RPM  
 Resolution: 1 RPM  
 Accuracy:  $\pm(0.05\% + 5d)$

### Pulse Width

Range: 2 $\mu$ s to 500Ms (pulse width > 2 $\mu$ s)

### Duty Cycle

Range: 25% to 75%

### LCD Display

Size: 2.5" x 2.5"

### General Specifications

Power:  
 4.8V NiMH battery pack  
 120V to 9V @ 1A DC adapter  
 Battery Life:  
 4 hours without backlight  
 3 hours with backlight on  
 Display: 132 x 128 Pixel super twist LCD  
 Size: 7.5" (H) x 3.5" (W) 1.57" (D)  
 Weight: 1.5 lbs  
 Standard Accessories: Manual, Carrying case, Test leads, Holster, RS-232 cable, Software, AC/DC charger