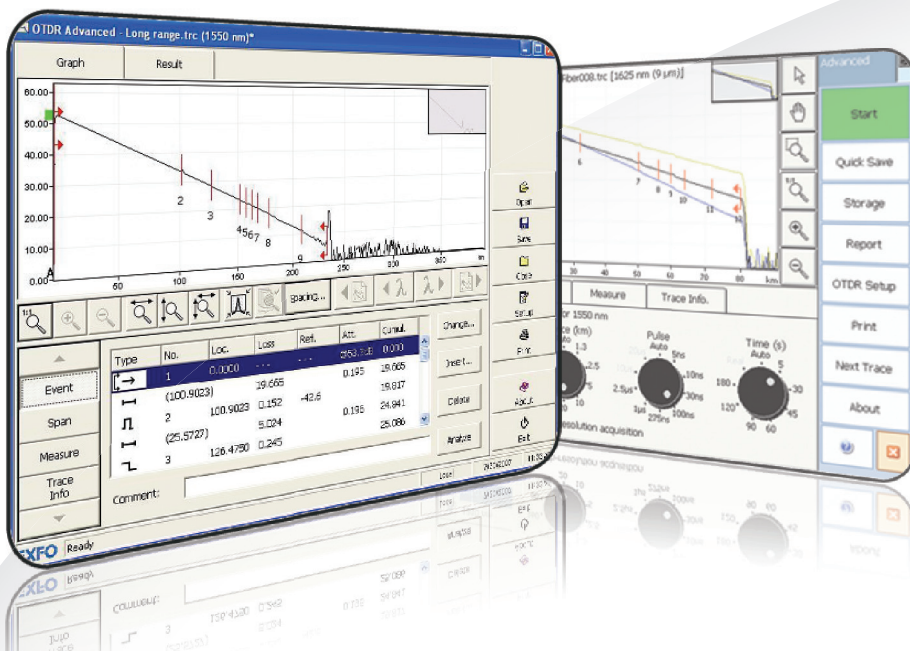


FTB-7600E—Ultra-Long-Haul OTDR

HIGH-END FIBER CHARACTERIZATION AND SUBMARINE CABLE TESTING



EXFO Connect
Compatible

40G

FTTx
TEST SOLUTIONS

50 dB OTDR characterizing fiber with maximum accuracy over distances of more than 200 km

KEY FEATURES

Dynamic range of up to 50 dB

Single- and dual-wavelength configurations
(1310/1550/1625 nm)

Up to 256 000 sampling points

Industry-leading linearity of ± 0.03 dB/dB

EXFO Connect-compatible: automated asset management;
data goes through the cloud and into a dynamic database

APPLICATIONS

Ultra-long-haul network testing

Submarine cable testing

PLATFORM COMPATIBILITY



Platform
FTB-500



Compact Platform
FTB-200

EXFO

Assessing
Next-Gen Networks

EXFO Connect



AUTOMATE ASSET MANAGEMENT. PUSH TEST DATA IN THE CLOUD. GET CONNECTED.

EXFO Connect pushes and stores test equipment and test data content automatically in the cloud, allowing you to streamline test operation from build-out to maintenance.

EXPERT TEST TOOLS ON THE FTB-200 PLATFORM

EXpert Test Tools is a series of platform-based software testing tools that enhance the value of the FTB-200 platform, providing additional testing capabilities without the need for additional modules or units.

EXpert TEST TOOLS

EXpert VoIP TEST TOOLS

EXpert VoIP generates a voice-over-IP call directly from the test platform to validate performance during service turn-up and troubleshooting.

- › Supports a wide range of signaling protocols, including SIP, SCCP, H.248/Megaco and H.323
- › Supports MOS and R-factor quality metrics
- › Simplifies testing with configurable pass/fail thresholds and RTP metrics

EXpert IP TEST TOOLS

EXpert IP integrates six commonly used datacom test tools into one platform-based application to ensure that field technicians are prepared for a wide range of testing needs.

- › Rapidly performs debugging sequences with VLAN scan and LAN discovery
- › Validates end-to-end ping and traceroute
- › Verifies FTP performance and HTTP availability

EXpert IPTV TEST TOOLS

This powerful IPTV quality assessment solution enables set-top-box emulation and passive monitoring of IPTV streams, allowing quick and easy pass/fail verification of IPTV installations.

- › Real-time video preview
- › Analyzes up to 10 video streams
- › Comprehensive QoS and QoE metrics including MOS score

All specifications valid at 23 °C ± 2 °C with an FC/PC connector, unless otherwise specified.

TECHNICAL SPECIFICATIONS

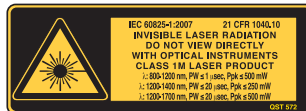
| | |
|-----------------------------------------------|-----------------------------------------------------|
| Model ^a | FTB-7600E |
| Wavelengths (nm) ^b | 1310 ± 20/1550 ± 20/1625 ± 10 |
| Dynamic range at 20 μs (dB) ^c | 50/50/48 ^g |
| Event dead zone (m) ^d | 1/1.5/1 |
| Attenuation dead zone (m) ^d | 5/5/5 |
| Distance range (km) | 1.25, 2.5, 5, 10, 20, 40, 80, 160, 260, 400 |
| Pulse width (ns) | 5, 10, 30, 100, 275, 1000, 2500, 10 000, 20 000 |
| Linearity (dB/dB) ^b | ± 0.03 |
| Loss threshold (dB) | 0.01 |
| Loss resolution (dB) | 0.001 |
| Sampling resolution (m) | 0.04 to 5 |
| Sampling points | Up to 256 000 |
| Distance uncertainty (m) ^e | ± (0.75 + 0.001 % x distance + sampling resolution) |
| Measurement time | User-defined (5 sec. minimum to 60 min. maximum) |
| Typical real-time refresh (Hz) | 4 |
| Stable source output power (dBm) ^f | 5 |

Notes

- For complete details on all available configurations, refer to the Ordering Information section.
- Typical.
- Typical dynamic range with a three-minute averaging at SNR = 1.
- Typical dead zone of singlemode modules for reflectance below -45 dB, using a 5 ns pulse.
- Does not include uncertainty due to fiber index.
- Typical output power value at 1550 nm.
- With NZDS fiber (G.655).

LASER SAFETY

21 CFR 1040.10 AND IEC 60825-1:2007
CLASS 1M



ORDERING INFORMATION

Singlemode (ULTRA-LONG-HAUL)

FTB-7600E-XX-XX-XX

Model

Dual-wavelength

FTB-7600E-0023B = SM OTDR module,
1310/1550 nm (9/125 µm)FTB-7600E-0034B = SM OTDR module,
1550/1625 nm (9/125 µm)OTDR Software Option ^a

00 = Without software option

AD = Macrobend finder and linear view

Connector

EA-EUI-28 = APC/DIN 47256

EA-EUI-89 = APC/FC narrow key

EA-EUI-91 = APC/SC

EA-EUI-95 = APC/E-2000

EA-EUI-98 = APC/LC

EI-EUI-28 = UPC/DIN 47256

EI-EUI-76 = UPC/HMS-10/AG

EI-EUI-89 = UPC/FC narrow key

EI-EUI-90 = UPC/ST

EI-EUI-91 = UPC/SC

EI-EUI-95 = UPC/E-2000

Example: FTB-7600E-0023B-EI-EUI-89-AD

Note

a. This software option is compatible only on FTB-200 platform.

EXFO Headquarters > Tel.: +1 418 683-0211 | Toll-free: +1 800 663-3936 (USA and Canada) | Fax: +1 418 683-2170 | info@EXFO.com | www.EXFO.comEXFO serves over 2000 customers in more than 100 countries. To find your local office contact details, please go to www.EXFO.com/contact.

EXFO is certified ISO 9001 and attests to the quality of these products. This device complies with Part 15 of the FCC Rules. Operation is subject to the following two conditions: (1) this device may not cause harmful interference, and (2) this device must accept any interference received, including interference that may cause undesired operation. EXFO has made every effort to ensure that the information contained in this specification sheet is accurate. However, we accept no responsibility for any errors or omissions, and we reserve the right to modify design, characteristics and products at any time without obligation. Units of measurement in this document conform to SI standards and practices. In addition, all of EXFO's manufactured products are compliant with the European Union's WEEE directive. For more information, please visit www.EXFO.com/recycle. Contact EXFO for prices and availability or to obtain the phone number of your local EXFO distributor.

For the most recent version of this spec sheet, please go to the EXFO website at www.EXFO.com/specs.

In case of discrepancy, the Web version takes precedence over any printed literature.