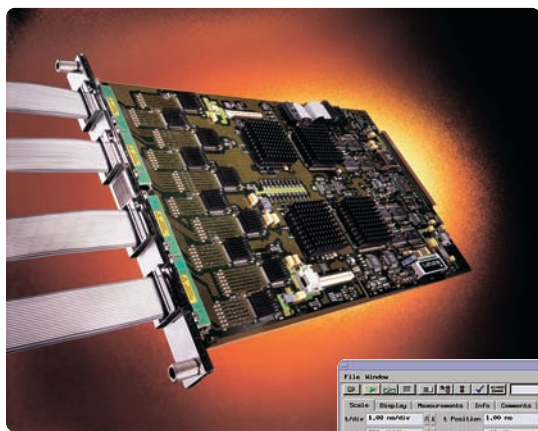
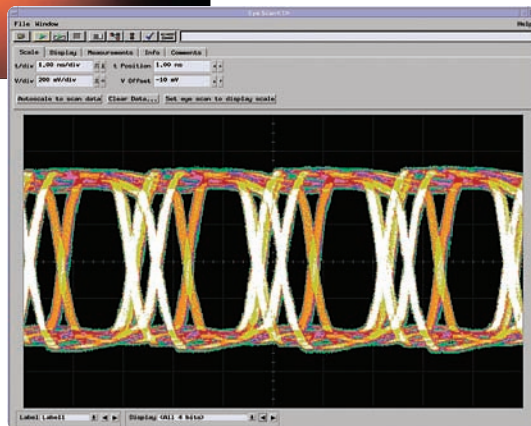


600 MHz Logic Analyzer Modules for the Agilent Technologies 16700 Series Systems

Agilent models 16753A, 16754A, 16755A, and 16756A



- State analysis up to 600 MHz on all channels
- Memory depths from 1 M to 64 M
- 4 GHz “timing zoom” (simultaneous timing analysis on all channels) with 64 K memory depth
- 1.2 GHz, 128 M deep memory timing analysis on half channels
- “Eye scan” feature
- Low-capacitance, high-reliability, high-density probing
- Differential or single-ended inputs
- Reliable synchronous state sampling
- Agilent’s exclusive “eye finder” technology
- 68 channels per module, up to 340 channels by combining modules



It’s a challenging new world out there

- Serial, point-to-point buses
- Ever-increasing clock speeds
- Shrinking timing and noise margins
- New clocking schemes
- Complex data packets and protocols
- Small signal amplitudes
- Differential signals

Agilent has a new set of tools and methods to tackle these new challenges. The Agilent logic analysis system and the 16753A, 16754A, 16755A, and 16756A state and timing modules provide the critical insight you need to debug and validate your high-speed digital designs.

It starts with probing

Reliable logic analyzer measurements have to start at the probe tips. Agilent’s innovative logic analyzer probes provide the signal integrity it takes to make reliable measurements, along with high-density, reliable probing technology and minimal circuit loading. Small signals are not a challenge: these logic analyzer modules can make reliable measurements on differential signals as small as 100 mV peak-to-peak on each side.



Agilent Technologies

Reliable sampling

The next critical step in reliable logic analyzer measurements is reliable sampling. Agilent's architecture for synchronous sampling yields repeatable results, run to run, clock cycle to clock cycle. Agilent's "eye finder" feature automatically adjusts the sampling point on every channel, based on actual measurements of millions of clock cycles, for maximum reliability.

Signal integrity requires a new tool

Are you spending weeks painstakingly attaching scope probes to test points, gathering data, and analyzing it? Or maybe your schedule is tight, so you just measure a few signals under a few conditions, and hope for the best.

On your next project, use Agilent's innovative, time-saving "eye scan" technology for a comprehensive overview of the system's signal integrity. Immediately spot problems and identify the offending signals. Use the time you gain to check out signal integrity under all conditions.

The rest of the story

Agilent solutions don't stop with reliable probes and powerful acquisition. A wide array of analysis probes and protocol analysis tools from Agilent and Agilent's premier solution partners provide optimal debug solutions for high-speed systems. These include solutions for

- PCI Express
- 333 MHz DDR (from FuturePlus Inc.)
- RapidIO
- HyperTransport (from FuturePlus Inc.)
- Intel® Pentium® 4-Processor Systems

Agilent Technologies' Test and Measurement Support, Services, and Assistance

Agilent Technologies aims to maximize the value you receive, while minimizing your risk and problems. We strive to ensure that you get the test and measurement capabilities you paid for and obtain the support you need. Our extensive support resources and services can help you choose the right Agilent products for your applications and apply them successfully. Every instrument and system we sell has a global warranty. Support is available for at least five years beyond the production life of the product. Two concepts underlie Agilent's overall support policy: "Our Promise" and "Your Advantage."

Our Promise

Our Promise means your Agilent test and measurement equipment will meet its advertised performance and functionality. When you are choosing new equipment, we will help you with product information, including realistic performance specifications and practical recommendations from experienced test engineers. When you use Agilent equipment, we can verify that it works properly, help with product operation, and provide basic measurement assistance for the use of specified capabilities, at no extra cost upon request. Many self-help tools are available.

Your Advantage

Your Advantage means that Agilent offers a wide range of additional expert test and measurement services, which you can purchase according to your unique technical and business needs. Solve problems efficiently and gain a competitive edge by contracting with us for calibration, extra-cost upgrades, out-of-warranty repairs, and on-site education and training, as well as design, system integration, project management, and other professional engineering services. Experienced Agilent engineers and technicians worldwide can help you maximize your productivity, optimize the return on investment of your Agilent instruments and systems, and obtain dependable measurement accuracy for the life of those products.



Agilent Email Updates

www.agilent.com/find/emailupdates
Get the latest information on the products and applications you select.

Agilent T&M Software and Connectivity

Agilent's Test and Measurement software and connectivity products, solutions and developer network allows you to take time out of connecting your instruments to your computer with tools based on PC standards, so you can focus on your tasks, not on your connections. Visit www.agilent.com/find/connectivity for more information.

For more assistance with your test & measurement needs or to find your local Agilent office go to

www.agilent.com/find/assist

Product specifications and descriptions in this document subject to change without notice.

© Agilent Technologies, Inc. 2002
Printed in USA September 1, 2002
5988-7711EN

