

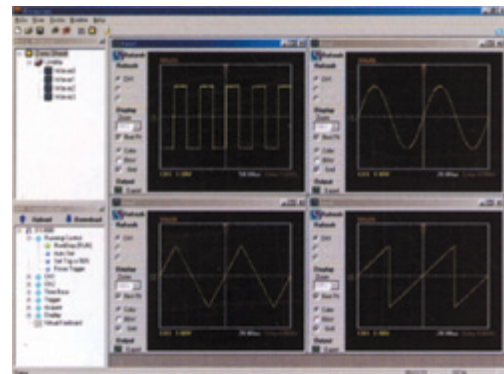
100MHz Color Digital Storage Oscilloscope (Formerly D7510C)

6810CN

- 100MHz Analog bandwidth
- 250MS/s real time sampling rate and 50GS/s Equivalent time sampling
- 4K record length for each channel
- Wave forms may be zoomed from 1:1 to 100:1
- FFT function and Pass/Fail
- High resolution 320 x 240 Pixel LCD display
- 256 Color VGA LCD display
- Optional extension module for RS232 and GPIB interfaces with ultra scope software
- 20 Automatic waveform measurements
- Auto-setup and auto calibration
- 10 waveforms and setups may be stored in memory
- Peak Detect, built-in USB port, Digital Filters and Waveform Record/Playback



6810CN



■ SPECIFICATIONS

Vertical

No. of Inputs: 2
Analog Bandwidth: DC to 100MHz
Selectable Bandwidth Limit: 20MHz
Rise Time: < 3.5ns
Sensitivity: 2mV/Div to 5V/Div
Resolution: 8 Bits
Coupling: AC/DC/Gnd
Accuracy: $\pm 3\%$
Input Impedance: 1M Ω and 15pf capacitance
Maximum Input Voltage: 400V DC
Probe Attenuation Factors: X1, X10, X100, X1000

Horizontal

Sweep Rates:
2ns/Div to 50s/Div in a 1n a 1-2-5 sequence
(to 10ps with zoom)
Accuracy: ± 100 ppm
Resolution: 40ps

XY Plot

Bandwidth: 100MHz
Phase Difference: 3°

Acquisition System

Acquisition Modes: Normal, Analog, Peak Detect
Sampling: Real and Equivalent
Sample rates:
Real time: 10S/s to 250MS/s
Equivalent: 50GS/s
Record Length: 4K samples per channel
Single Shot Bandwidth: 50MHz

Trigger

Sensitivity:
Internal: 1 Div (DC to 10MHz)
External: 100mV (DC to 10MHz), 200mV (10MHz to 100MHz)
External/5: 500mV (DC to 100MHz)
Video Trigger Sensitivity:
Int: 2 Div P-P
Ext: $\pm (0.3 \text{ Div} + 40\text{mV})$
Ext/5: 2V
Trigger Level Range:
Int: ± 12 Div from center of the screen
Ext: ± 1.6 Div
Ext/5: ± 8 Div
Set Level: 50%
Trig. Type: Video, Edge, Pulse
Trig. Modes: Auto, Normal, Single
VSource: CH 1, CH 2, Ext, Ext/5, AC line
Coupling: AC, DC, LF Reject, HF Reject

Measurements

Auto Measurement: Vp-p, Vrms, Vmax, Vmin, Vtop, Vbase, Vavg, V overshoot, V undershoot, Freq, Period, + or - Width, Rise and fall time, Delay time, +/- Duty cycle
Cursor: V, T, ΔT , ΔV and $1/\Delta T$

Math Operations

Type: (CH1 + CH2), (CH1 - CH2), (CH1 x CH2), (CH1/CH2), FFT

Memory

Memory: 10 waveforms and 10 setups may be save and recalled for each channel

FFT

Frequency Points: 1024
Weighting: Hanning, Hamming, Blackman-Harris, Rectangular

Display

Size: 5.7" (Diagonal LCD)
Resolution: 320 x 240 Pixels
Type: 256 Color VGA LCD

Extension Module

RS232: Baud Rates: 300, 2400, 4800, 9600, 19200, 38400
GPIB: IEEE 488.2

General Specifications

Power Requirements: 100V to 240V, 45Hz to 450Hz
Power Consumption: < 50VA
Operating Temperature: 10 to 40°C (50 to 104°F) at a relative humidity of 90%
Size: 5.6" H x 11.3" W x 14.0" D
Weight: 10 lbs
Supplied Accessories: Manual, Line cord, (2) X1/X10 probes
Optional Accessories: GPIB and RS-232 interface module, Flash RAM and Pass fail module, Ultra-Scope software CD